

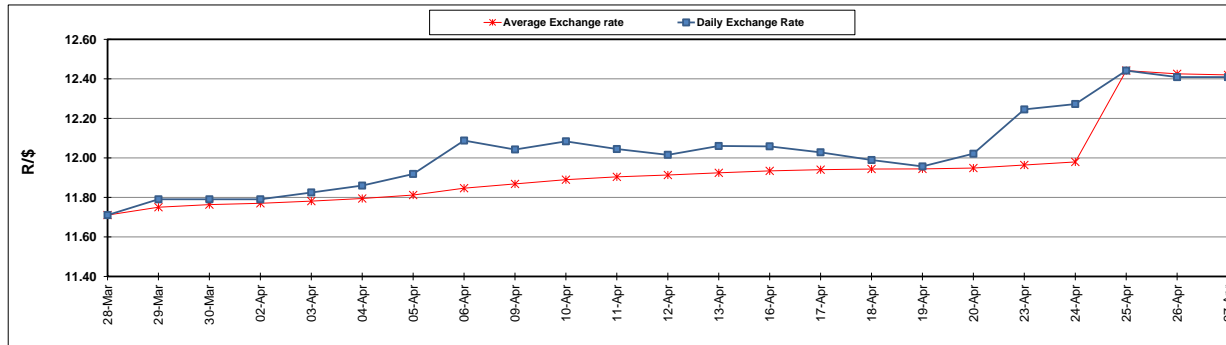
	PETROL 95 ULP	PETROL 93 ULP & LRP	DIESEL 0.05%	DIESEL 0.005%	ILL. PAR.
GAUTENG PUMP PRICE (SA c/l) AS FROM 02/05/2018	1 497.000	1 472.000	-	-	-
WHOLESALE PRICE (SA c/l) AS FROM 02/05/2018	-	-	1 333.830	1 338.230	845.088
SINGLE NATIONAL MAXIMUM RETAIL PRICE	-	-	-	-	1 089.000
BASIC FUEL PRICE - 27/04/2018 (SA c/l)	694.543	679.016	713.061	718.212	728.605
PRESS RELEASE CONTRIBUTION TO BFP 25/04/2018 - 27/04/2018 (SA c/l)	596.070	581.070	601.630	607.030	620.128
UNIT OVER/(UNDER) RECOVERY - 27/04/2018 (SA c/l)	(98.473)	(97.946)	(111.431)	(111.182)	(108.477)
AVERAGE BASIC FUEL PRICE 25/04/2018 - 27/04/2018	690.202	675.267	712.038	716.884	728.279
AVERAGE UNIT OVER/(UNDER) RECOVERY 25/04/2018 - 27/04/2018	(94.132)	(94.197)	(110.408)	(109.854)	(108.151)

ANALYSIS MOVEMENT OF AVERAGE OVER/(UNDER) RECOVERY

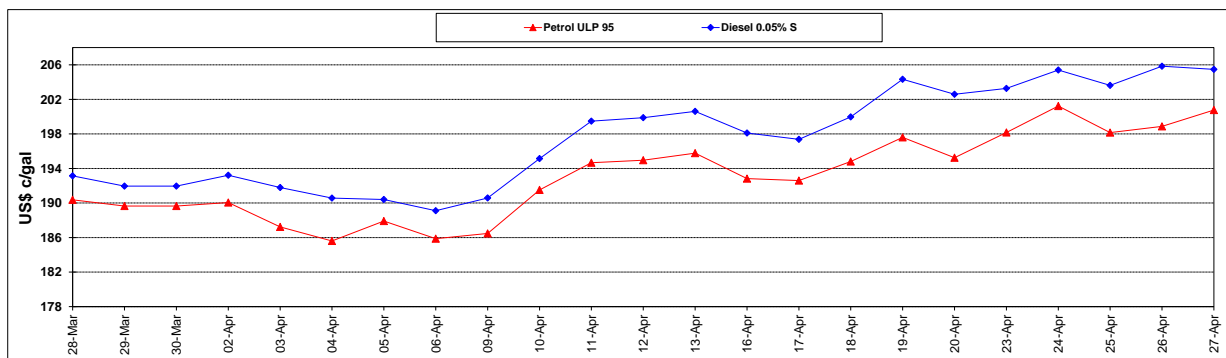
	PETROL 95	PETROL 93	DIESEL 0.05%	DIESEL 0.005%	ILL. PAR.
- MOVEMENT IN INTERNATIONAL PRODUCT PRICES	(69.674)	(70.269)	(85.177)	(84.451)	(82.344)
- MOVEMENT IN EXCHANGE RATE	(24.458)	(23.928)	(25.231)	(25.403)	(25.807)
AVERAGE UNIT OVER/(UNDER) RECOVERY 25/04/2018 - 27/04/2018	(94.132)	(94.197)	(110.408)	(109.854)	(108.151)

R/\$ EXCHANGE RATE - (R/\$12.4088 - 27/04/2018)

EXCHANGE RATE USED IN BASIC FUEL PRICE



INTERNATIONAL PRODUCT PRICES OF BASKET USED IN BASIC FUEL PRICE



BASIC FUEL PRICE IN SA CENTS PER LITRE

