

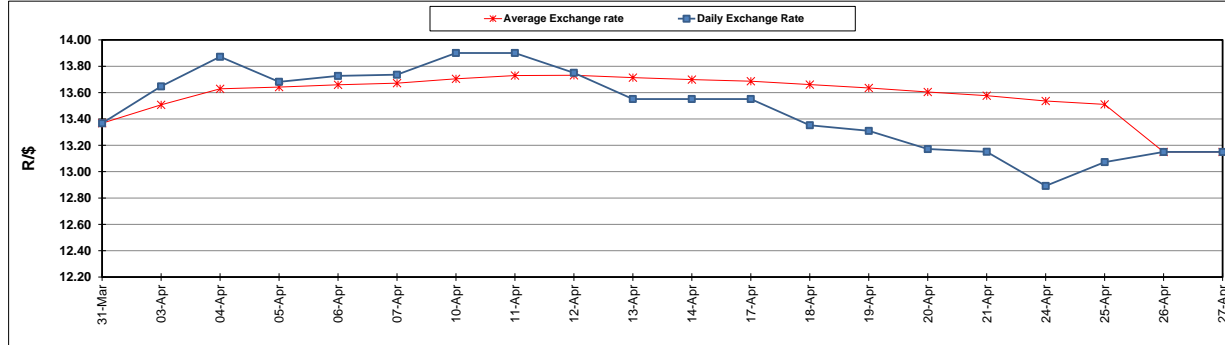
	PETROL 95 ULP	PETROL 93 ULP & LRP	DIESEL 0.05%	DIESEL 0.005%	ILL. PAR.
GAUTENG PUMP PRICE (SA c/l) AS FROM 03/05/2017	1 379.000	1 357.000	-	-	-
WHOLESALE PRICE (SA c/l) AS FROM 03/05/2017	-	-	1 180.330	1 184.730	736.088
SINGLE NATIONAL MAXIMUM RETAIL PRICE	-	-	-	-	947.000
BASIC FUEL PRICE - 27/04/2017 (SA c/l)	554.514	537.720	535.626	540.090	528.309
PRESS RELEASE CONTRIBUTION TO BFP 26/04/2017 - 27/04/2017 (SA c/l)	548.670	536.670	538.630	541.030	531.128
UNIT OVER/(UNDER) RECOVERY (SA c/l) - 27/04/2017	(5.844)	(1.050)	3.004	0.940	2.819
AVERAGE BASIC FUEL PRICE 26/04/2017 - 27/04/2017	562.141	545.872	541.187	545.717	534.055
AVERAGE UNIT OVER/(UNDER) RECOVERY 26/04/2017 - 27/04/2017	(13.471)	(9.202)	(2.557)	(4.687)	(2.927)

ANALYSIS MOVEMENT OF AVERAGE OVER/(UNDER) RECOVERY

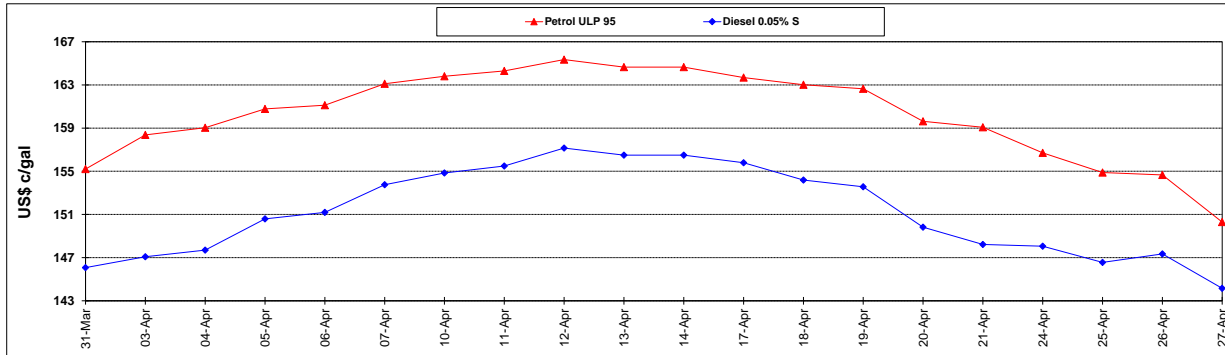
	PETROL 95	PETROL 93	DIESEL 0.05%	DIESEL 0.005%	ILL. PAR.
- MOVEMENT IN INTERNATIONAL PRODUCT PRICES	(28.891)	(24.175)	(17.402)	(19.656)	(17.576)
- MOVEMENT IN EXCHANGE RATE	15.420	14.973	14.845	14.969	14.649
AVERAGE UNIT OVER/(UNDER) RECOVERY 26/04/2017 - 27/04/2017	(13.471)	(9.202)	(2.557)	(4.687)	(2.927)

R/\$ EXCHANGE RATE - (R/\$ 13.1498 - 27/04/2017)

EXCHANGE RATE USED IN BASIC FUEL PRICE



INTERNATIONAL PRODUCT PRICES OF BASKET USED IN BASIC FUEL PRICE



BASIC FUEL PRICE IN SA CENTS PER LITRE

