

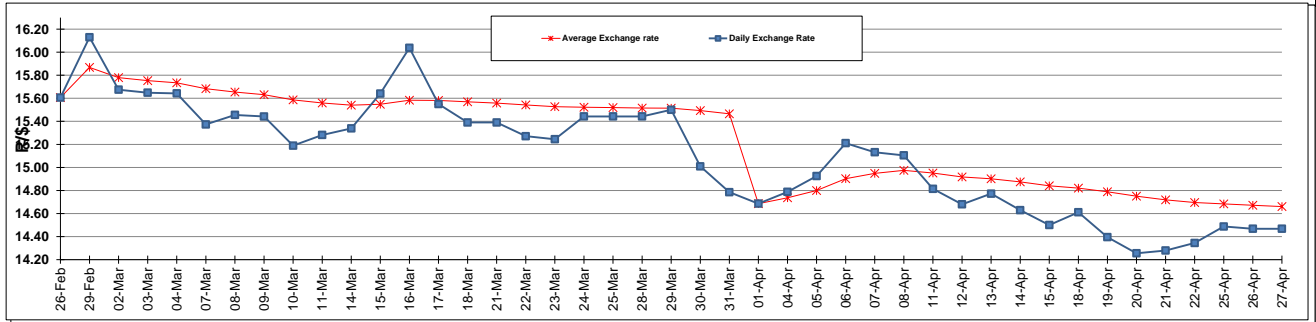
	PETROL 95 ULP	PETROL 93 ULP & LRP	DIESEL 0.05%	DIESEL 0.005%	ILL. PAR.
GAUTENG PUMP PRICE (SA c/l) AS FROM 06/04/2016	1 262.000	1 232.000	-	-	-
WHOLESALE PRICE (SA c/l) AS FROM 06/04/2016	-	-	1 053.870	1 059.270	662.628
SINGLE NATIONAL MAXIMUM RETAIL PRICE	-	-	-	-	848.000
BASIC FUEL PRICE - 27/04/2016 (SA c/l)	571.113	551.540	521.031	524.774	514.697
PRESS RELEASE CONTRIBUTION TO BFP 06/04/2716 - 27/04/2016 (SA c/l)	540.970	520.970	487.630	493.030	501.128
UNIT OVER/(UNDER) RECOVERY (SA c/l) - 27/04/2016	(30.143)	(30.570)	(33.401)	(31.744)	(13.569)
AVERAGE BASIC FUEL PRICE 01/04/2016 - 27/04/2016	544.464	525.436	475.076	479.467	482.832
AVERAGE UNIT OVER/(UNDER) RECOVERY 01/04/2016 - 27/04/2016	(11.862)	(12.518)	3.081	3.774	9.454

ANALYSIS MOVEMENT OF AVERAGE OVER/(UNDER) RECOVERY

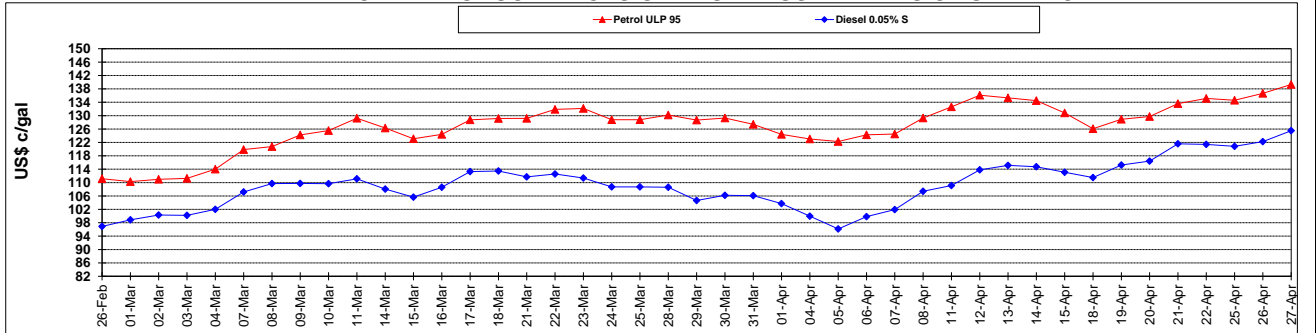
	PETROL 95	PETROL 93	DIESEL 0.05%	DIESEL 0.005%	ILL. PAR.
- MOVEMENT IN INTERNATIONAL PRODUCT PRICES	(41.750)	(41.363)	(22.999)	(22.546)	(17.051)
- MOVEMENT IN EXCHANGE RATE	29.888	28.844	26.079	26.320	26.505
AVERAGE UNIT OVER/(UNDER) RECOVERY 01/04/2016 - 27/04/2016	(11.862)	(12.518)	3.081	3.774	9.454

R/\$ EXCHANGE RATE - (R/\$ 14.4680 - 27/04/2016)

EXCHANGE RATE USED IN BASIC FUEL PRICE



INTERNATIONAL PRODUCT PRICES OF BASKET USED IN BASIC FUEL PRICE



BASIC FUEL PRICE IN SA CENTS PER LITRE

