

UPDATE OF THE BASIC FUEL PRICE

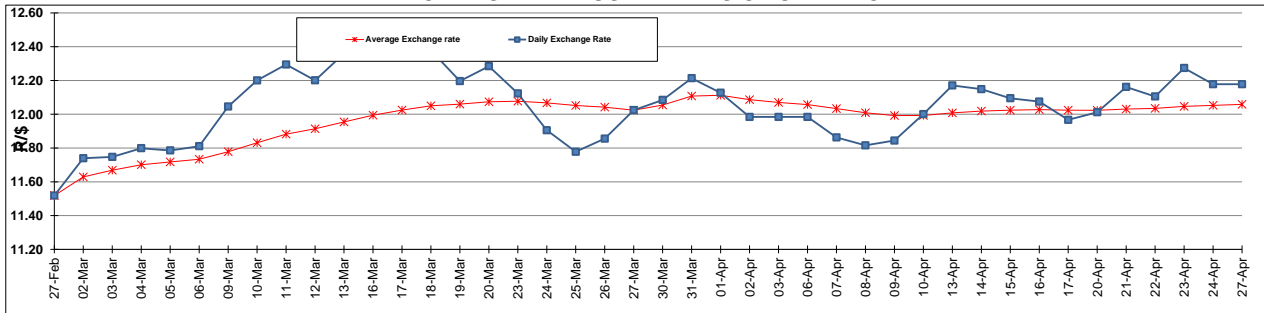
	PETROL 95 ULP	PETROL 93 ULP & LRP	DIESEL 0.05%	DIESEL 0.005%	ILL. PAR.
GAUTENG PUMP PRICE (SA c/l) AS FROM 03/04/2015	1,289.000	1,261.000	-	-	-
WHOLESALE PRICE (SA c/l) AS FROM 03/04/2015	-	-	1,122.790	1,129.190	743.828
SINGLE NATIONAL MAXIMUM RETAIL PRICE	-	-	-	-	957.000
BASIC FUEL PRICE - 27/04/2015 (SA c/l)	662.484	650.424	627.713	633.048	616.241
PRESS RELEASE CONTRIBUTION TO BFP 27/04/2015 - 27/04/2015 (SA c/l)	615.650	597.650	594.630	601.030	586.128
UNIT OVER/(UNDER) RECOVERY (SA c/l) - 27/04/2015	(46.834)	(52.774)	(33.083)	(32.018)	(30.113)
AVERAGE BASIC FUEL PRICE 27/03/2015 - 27/04/2015	602.372	589.102	582.017	592.712	575.761
AVERAGE UNIT OVER/(UNDER) RECOVERY 27/03/2015 - 27/04/2015	2.451	(1.461)	7.158	3.068	7.367

ANALYSIS MOVEMENT OF AVERAGE OVER/(UNDER) RECOVERY

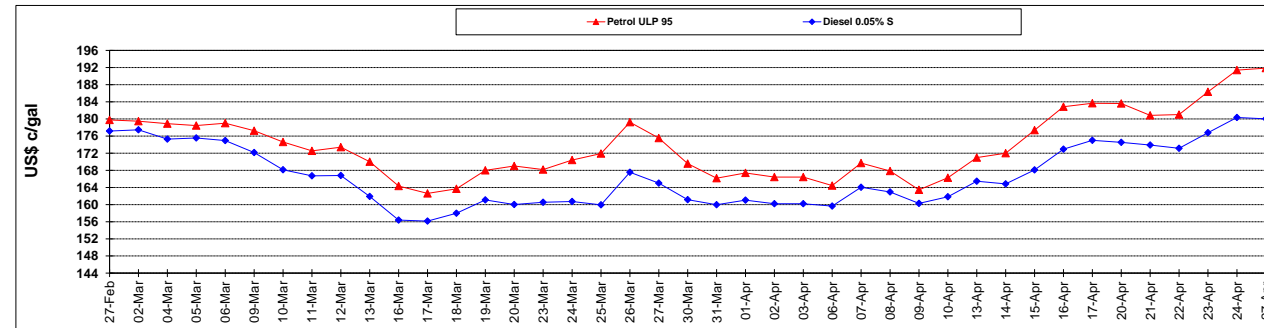
	PETROL 95	PETROL 93	DIESEL 0.05%	DIESEL 0.005%	ILL. PAR.
- MOVEMENT IN INTERNATIONAL PRODUCT PRICES	3.270	(0.660)	7.950	3.874	8.150
- MOVEMENT IN EXCHANGE RATE	(0.819)	(0.801)	(0.792)	(0.806)	(0.783)
AVERAGE UNIT OVER/(UNDER) RECOVERY 27/03/2015 - 27/04/2015	2.451	(1.461)	7.158	3.068	7.367

R/\$ EXCHANGE RATE - (R/\$ 12.1780 - 27/04/2015)

EXCHANGE RATE USED IN BASIC FUEL PRICE



INTERNATIONAL PRODUCT PRICES OF BASKET USED IN BASIC FUEL PRICE



BASIC FUEL PRICE IN SA CENTS PER LITRE

