

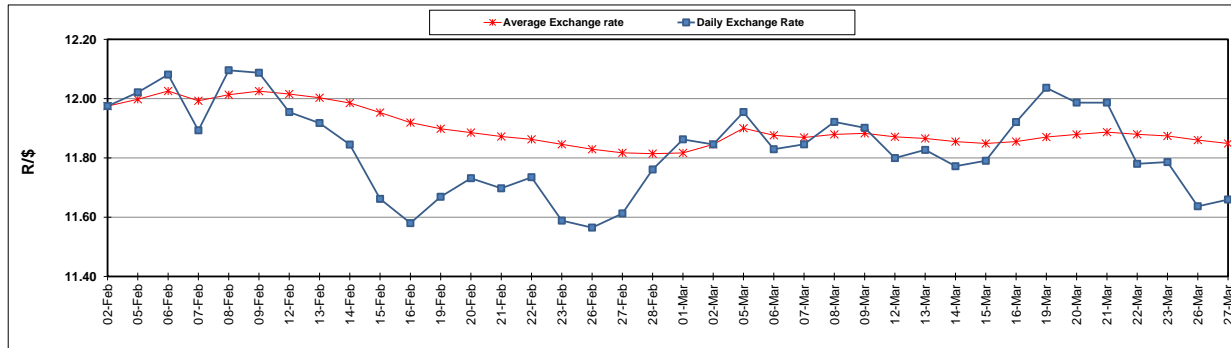
	PETROL 95 ULP	PETROL 93 ULP & LRP	DIESEL 0.05%	DIESEL 0.005%	ILL. PAR.
GAUTENG PUMP PRICE (SA c/l) AS FROM 07/03/2018	1 376.000	1 354.000	-	-	-
WHOLESALE PRICE (SA c/l) AS FROM 07/03/2018	-	-	1 209.630	1 215.030	795.388
SINGLE NATIONAL MAXIMUM RETAIL PRICE	-	-	-	-	1 026.000
BASIC FUEL PRICE - 27/03/2018 (SA c/l)	623.414	608.668	633.976	638.959	641.498
PRESS RELEASE CONTRIBUTION TO BFP 07/03/2018 - 27/03/2018 (SA c/l)	586.170	574.170	598.630	604.030	625.128
UNIT OVER/(UNDER) RECOVERY - 27/03/2018 (SA c/l)	(37.244)	(34.498)	(35.346)	(34.929)	(16.370)
AVERAGE BASIC FUEL PRICE 02/03/2018 - 27/03/2018	602.870	588.373	610.175	614.802	624.742
AVERAGE UNIT OVER/(UNDER) RECOVERY 02/03/2018 - 27/03/2018	(10.700)	(8.203)	(3.712)	(3.439)	4.219

### ANALYSIS MOVEMENT OF AVERAGE OVER/(UNDER) RECOVERY

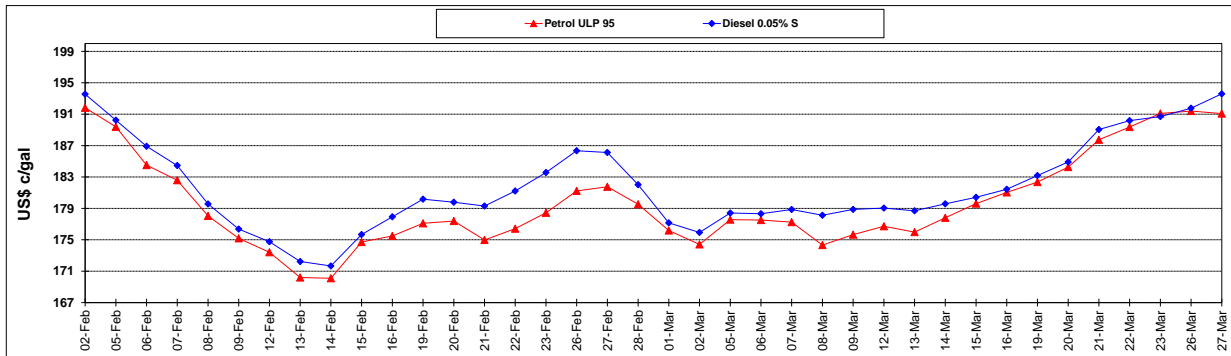
	PETROL 95	PETROL 93	DIESEL 0.05%	DIESEL 0.005%	ILL. PAR.
- MOVEMENT IN INTERNATIONAL PRODUCT PRICES	(9.062)	(6.604)	(2.054)	(1.768)	5.917
- MOVEMENT IN EXCHANGE RATE	(1.638)	(1.599)	(1.658)	(1.671)	(1.698)
AVERAGE UNIT OVER/(UNDER) RECOVERY 02/03/2018 - 27/03/2018	(10.700)	(8.203)	(3.712)	(3.439)	4.219

### R/\$ EXCHANGE RATE - (R/\$11.6595 - 27/03/2018)

#### EXCHANGE RATE USED IN BASIC FUEL PRICE



#### INTERNATIONAL PRODUCT PRICES OF BASKET USED IN BASIC FUEL PRICE



#### BASIC FUEL PRICE IN SA CENTS PER LITRE

