

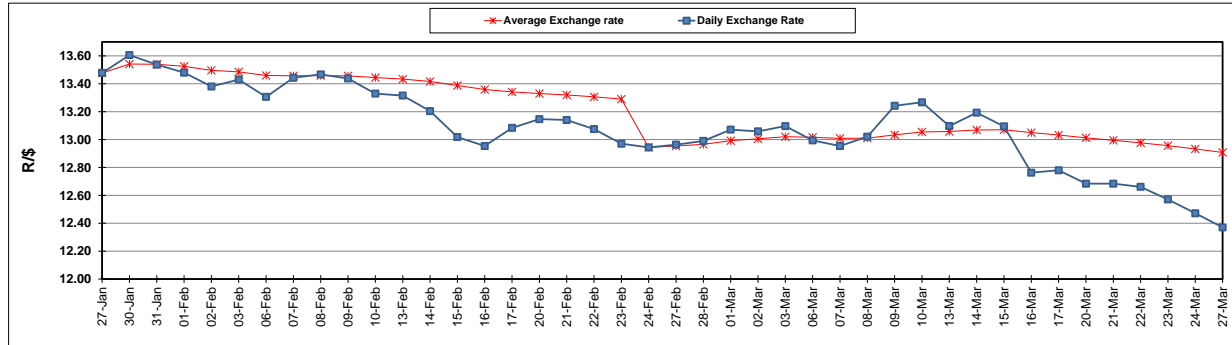
	PETROL 95 ULP	PETROL 93 ULP & LRP	DIESEL 0.05%	DIESEL 0.005%	ILL. PAR.
GAUTENG PUMP PRICE (SA c/l) AS FROM 01/03/2017	1 354.000	1 330.000	-	-	-
WHOLESALE PRICE (SA c/l) AS FROM 01/03/2017	-	-	1 160.830	1 163.230	750.588
SINGLE NATIONAL MAXIMUM RETAIL PRICE	-	-	-	-	966.000
BASIC FUEL PRICE - 27/03/2017 (SA c/l)	516.919	502.433	492.196	495.234	489.678
PRESS RELEASE CONTRIBUTION TO BFP 01/03/2017 - 27/03/2017 (SA c/l)	612.870	598.870	588.630	591.030	583.128
UNIT OVER/(UNDER) RECOVERY (SA c/l) - 27/03/2017	95.951	96.437	96.434	95.796	93.450
AVERAGE BASIC FUEL PRICE 24/02/2017 - 27/03/2017	549.492	537.419	540.427	543.352	533.340
AVERAGE UNIT OVER/(UNDER) RECOVERY 24/02/2017- 27/03/2017	64.469	62.542	48.476	47.951	50.879

ANALYSIS MOVEMENT OF AVERAGE OVER/(UNDER) RECOVERY

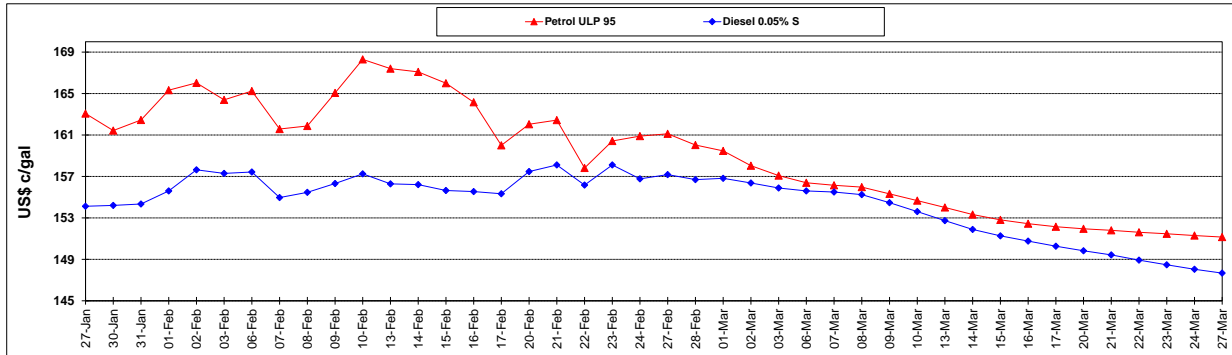
	PETROL 95	PETROL 93	DIESEL 0.05%	DIESEL 0.005%	ILL. PAR.
- MOVEMENT IN INTERNATIONAL PRODUCT PRICES	61.817	59.948	45.868	45.328	48.305
- MOVEMENT IN EXCHANGE RATE	2.652	2.594	2.608	2.623	2.574
AVERAGE UNIT OVER/(UNDER) RECOVERY 24/02/2017 - 27/03/2017	64.469	62.542	48.475	47.951	50.879

R/\$ EXCHANGE RATE - (R/\$ 12.3703 - 27/03/2017)

EXCHANGE RATE USED IN BASIC FUEL PRICE



INTERNATIONAL PRODUCT PRICES OF BASKET USED IN BASIC FUEL PRICE



BASIC FUEL PRICE IN SA CENTS PER LITRE

