

UPDATE OF THE BASIC FUEL PRICE

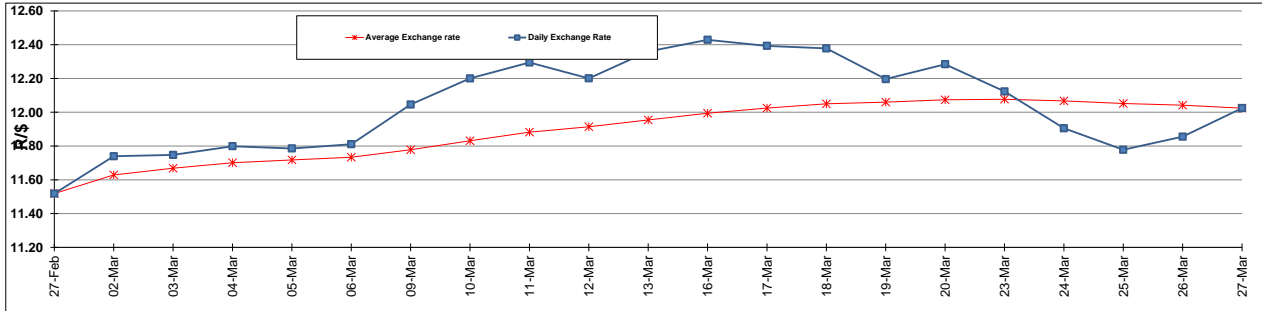
	PETROL 95 ULP	PETROL 93 ULP & LRP	DIESEL 0.05%	DIESEL 0.005%	ILL. PAR.
GAUTENG PUMP PRICE (SA c/l) AS FROM 01/04/2015	1,289.000	1,261.000	-	-	-
WHOLESALE PRICE (SA c/l) AS FROM 01/04/2015	-	-	1,122.790	1,129.190	743.828
SINGLE NATIONAL MAXIMUM RETAIL PRICE	-	-	-	-	957.000
BASIC FUEL PRICE - 27/03/2015 (SA c/l)	608.330	590.959	578.641	584.698	576.333
PRESS RELEASE CONTRIBUTION TO BFP 27/03/2015 - 27/03/2015 (SA c/l)	536.250	524.250	554.630	559.030	564.128
UNIT OVER/(UNDER) RECOVERY (SA c/l) - 27/03/2015	(72.080)	(66.709)	(24.011)	(25.668)	(12.205)
AVERAGE BASIC FUEL PRICE 27/03/2015 - 27/03/2015	608.330	590.959	578.641	584.698	576.333
AVERAGE UNIT OVER/(UNDER) RECOVERY 27/03/2015 - 27/03/2015	(72.080)	(66.709)	(24.011)	(25.668)	(12.205)

ANALYSIS MOVEMENT OF AVERAGE OVER/(UNDER) RECOVERY

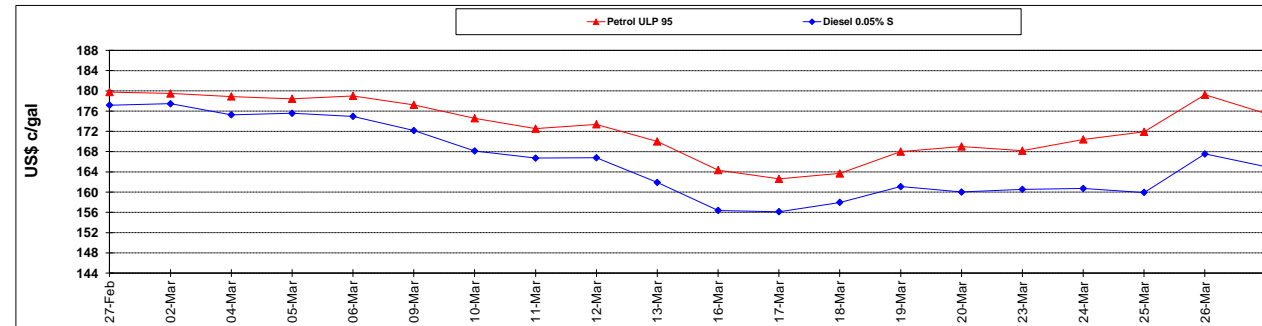
	PETROL 95	PETROL 93	DIESEL 0.05%	DIESEL 0.005%	ILL. PAR.
- MOVEMENT IN INTERNATIONAL PRODUCT PRICES	(72.986)	(67.589)	(24.872)	(26.538)	(13.063)
- MOVEMENT IN EXCHANGE RATE	0.906	0.880	0.861	0.870	0.858
AVERAGE UNIT OVER/(UNDER) RECOVERY 27/03/2015 - 27/03/2015	(72.080)	(66.709)	(24.011)	(25.668)	(12.205)

R/\$ EXCHANGE RATE - (R/\$ 12.0244 - 27/03/2015)

EXCHANGE RATE USED IN BASIC FUEL PRICE



INTERNATIONAL PRODUCT PRICES OF BASKET USED IN BASIC FUEL PRICE



BASIC FUEL PRICE IN SA CENTS PER LITRE

