

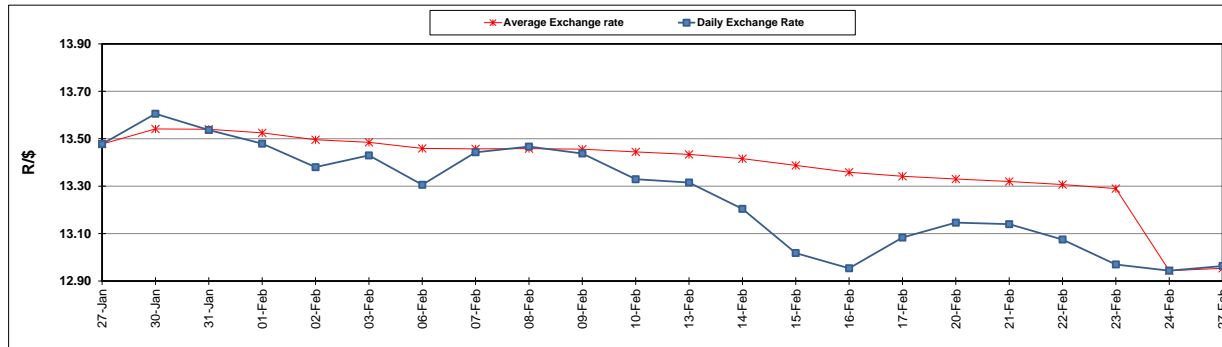
|  | PETROL 95<br>ULP | PETROL 93<br>ULP & LRP | DIESEL<br>0.05% | DIESEL<br>0.005% | ILL. PAR. |
|--|------------------|------------------------|-----------------|------------------|-----------|
| GAUTENG PUMP PRICE (SA c/l) AS FROM 01/03/2017                     | 1 354.000        | 1 330.000              | -               | -                | -         |
| WHOLESALE PRICE (SA c/l) AS FROM 01/03/2017                        | -                | -                      | 1 160.830       | 1 163.230        | 750.588   |
| SINGLE NATIONAL MAXIMUM RETAIL PRICE                               | -                | -                      | -               | -                | 966.000   |
| BASIC FUEL PRICE - 27/02/2017 (SA c/l)                             | 587.300          | 576.050                | 577.168         | 580.168          | 571.094   |
| PRESS RELEASE CONTRIBUTION TO BFP 24/02/2017 - 27/02/2017 (SA c/l) | 620.870          | 606.870                | 590.630         | 593.030          | 591.128   |
| UNIT OVER/(UNDER) RECOVERY (SA c/l) - 27/02/2017                   | 33.570           | 30.820                 | 13.462          | 12.862           | 20.034    |
| AVERAGE BASIC FUEL PRICE 24/02/2017 - 27/02/2017                   | 586.082          | 574.866                | 575.317         | 578.281          | 569.314   |
| AVERAGE UNIT OVER/(UNDER) RECOVERY 24/02/2017- 27/02/2017          | 34.788           | 32.004                 | 15.314          | 14.749           | 21.815    |

### ANALYSIS MOVEMENT OF AVERAGE OVER/(UNDER) RECOVERY

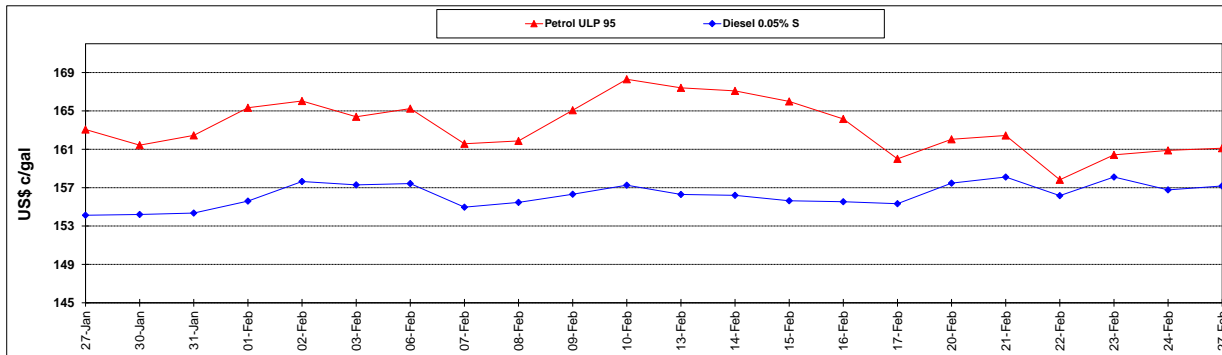
|  | PETROL 95 | PETROL 93 | DIESEL 0.05% | DIESEL 0.005% | ILL. PAR. |
|--|-----------|-----------|--------------|---------------|-----------|
| - MOVEMENT IN INTERNATIONAL PRODUCT PRICES                 | 34.051    | 31.281    | 14.589       | 14.021        | 21.098    |
| - MOVEMENT IN EXCHANGE RATE                                | 0.737     | 0.723     | 0.724        | 0.728         | 0.716     |
| AVERAGE UNIT OVER/(UNDER) RECOVERY 24/02/2017 - 27/02/2017 | 34.788    | 32.004    | 15.314       | 14.749        | 21.815    |

### R/\$ EXCHANGE RATE - (R/\$ 12.9635- 27/02/2017)

#### EXCHANGE RATE USED IN BASIC FUEL PRICE



#### INTERNATIONAL PRODUCT PRICES OF BASKET USED IN BASIC FUEL PRICE



#### BASIC FUEL PRICE IN SA CENTS PER LITRE

