

UPDATE OF THE BASIC FUEL PRICE

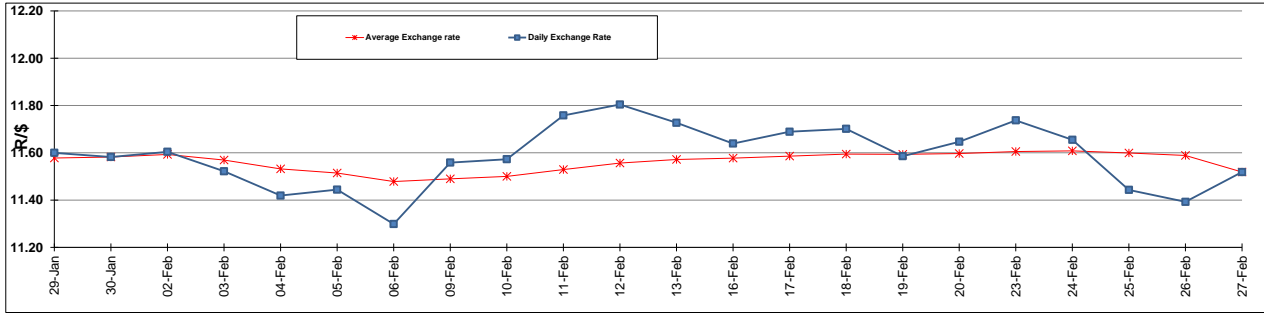
	PETROL 95 ULP	PETROL 93 ULP & LRP	DIESEL 0.05%	DIESEL 0.005%	ILL. PAR.
GAUTENG PUMP PRICE (SA c/l) AS FROM 04/03/2015	1,127.000	1,105.000	-	-	-
WHOLESALE PRICE (SA c/l) AS FROM 04/03/2015	-	-	1,000.090	1,004.490	718.928
SINGLE NATIONAL MAXIMUM RETAIL PRICE	-	-	-	-	931.000
BASIC FUEL PRICE - 27/02/2015 (SA c/l)	596.058	580.429	591.949	597.182	585.803
PRESS RELEASE CONTRIBUTION TO BFP 27/02/2015 - 27/02/2015 (SA c/l)	440.250	428.250	480.630	485.030	491.128
UNIT OVER/(UNDER) RECOVERY (SA c/l) - 27/02/2015	(155.808)	(152.179)	(111.319)	(112.152)	(94.675)
AVERAGE BASIC FUEL PRICE 27/02/2015 - 27/02/2015	596.058	580.429	591.949	597.182	585.803
AVERAGE UNIT OVER/(UNDER) RECOVERY 27/02/2015 - 27/02/2015	(155.808)	(152.179)	(111.319)	(112.152)	(94.675)

ANALYSIS MOVEMENT OF AVERAGE OVER/(UNDER) RECOVERY

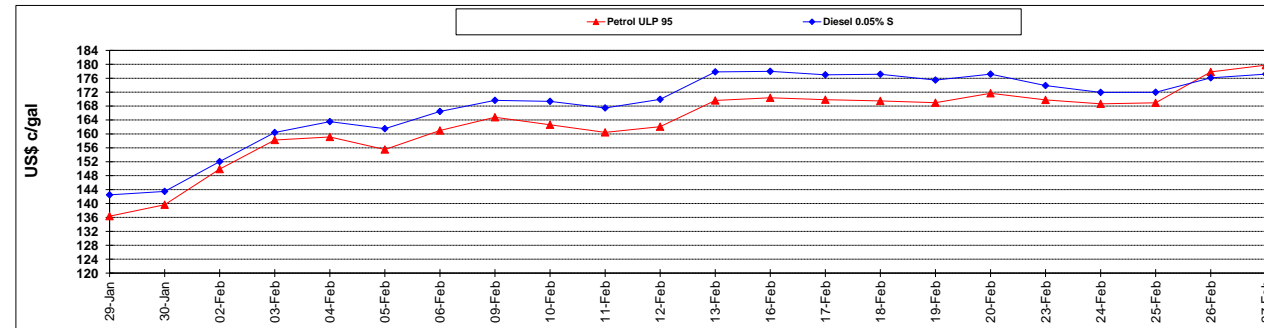
	PETROL 95	PETROL 93	DIESEL 0.05%	DIESEL 0.005%	ILL. PAR.
- MOVEMENT IN INTERNATIONAL PRODUCT PRICES	(159.456)	(155.732)	(114.942)	(115.807)	(98.260)
- MOVEMENT IN EXCHANGE RATE	3.648	3.553	3.623	3.655	3.585
AVERAGE UNIT OVER/(UNDER) RECOVERY 27/02/2015 - 27/02/2015	(155.808)	(152.179)	(111.319)	(112.152)	(94.675)

R/\$ EXCHANGE RATE - (R/\$ 11.5185 - 27/02/2015)

EXCHANGE RATE USED IN BASIC FUEL PRICE



INTERNATIONAL PRODUCT PRICES OF BASKET USED IN BASIC FUEL PRICE



BASIC FUEL PRICE IN SA CENTS PER LITRE

