

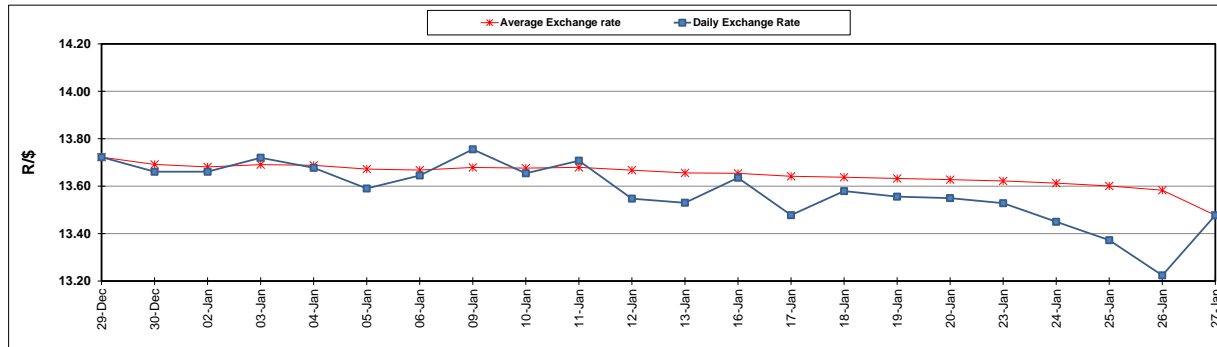
	PETROL 95 ULP	PETROL 93 ULP & LRP	DIESEL 0.05%	DIESEL 0.005%	ILL. PAR.
GAUTENG PUMP PRICE (SA c/l) AS FROM 01/02/2017	1 362.000	1 338.000	-	-	-
WHOLESALE PRICE (SA c/l) AS FROM 01/02/2017	-	-	1 162.830	1 165.230	758.588
SINGLE NATIONAL MAXIMUM RETAIL PRICE	-	-	-	-	976.000
BASIC FUEL PRICE - 27/01/2017 (SA c/l)	612.470	597.300	583.010	584.808	575.308
PRESS RELEASE CONTRIBUTION TO BFP 27/01/2017 - 27/01/2017 (SA c/l)	591.870	577.870	569.630	572.030	574.128
UNIT OVER/(UNDER) RECOVERY (SA c/l) - 27/01/2017	(20.600)	(19.430)	(13.380)	(12.778)	(1.180)
AVERAGE BASIC FUEL PRICE 27/01/2017 - 27/01/2017	612.470	597.300	583.010	584.808	575.308
AVERAGE UNIT OVER/(UNDER) RECOVERY 27/01/2017 - 27/01/2017	(20.600)	(19.430)	(13.380)	(12.778)	(1.180)

ANALYSIS MOVEMENT OF AVERAGE OVER/(UNDER) RECOVERY

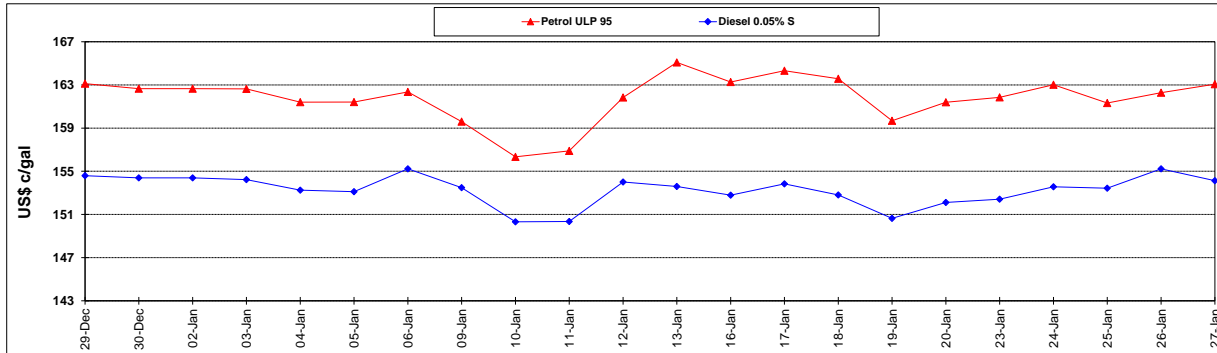
	PETROL 95	PETROL 93	DIESEL 0.05%	DIESEL 0.005%	ILL. PAR.
- MOVEMENT IN INTERNATIONAL PRODUCT PRICES	(25.399)	(24.110)	(17.948)	(17.360)	(5.688)
- MOVEMENT IN EXCHANGE RATE	4.799	4.680	4.568	4.582	4.508
AVERAGE UNIT OVER/(UNDER) RECOVERY 27/01/2017 - 27/01/2017	(20.600)	(19.430)	(13.380)	(12.778)	(1.180)

R/\$ EXCHANGE RATE - (R/\$ 13.4775- 27/01/2017)

EXCHANGE RATE USED IN BASIC FUEL PRICE



INTERNATIONAL PRODUCT PRICES OF BASKET USED IN BASIC FUEL PRICE



BASIC FUEL PRICE IN SA CENTS PER LITRE

