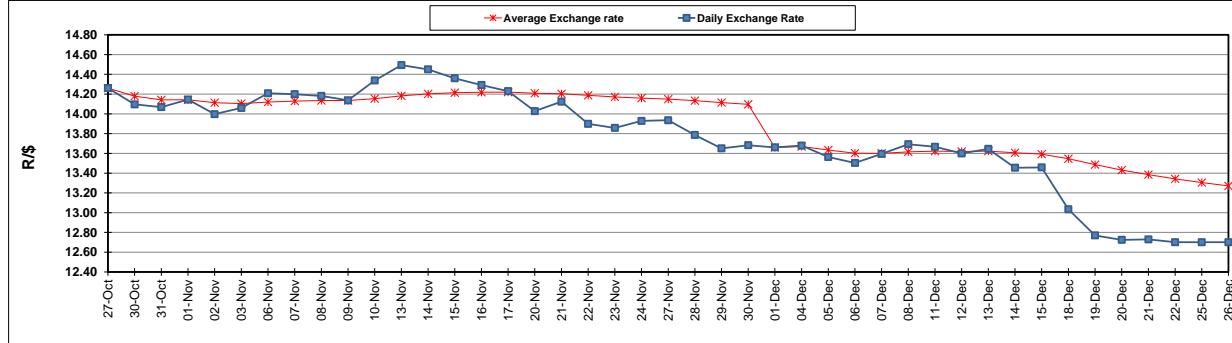


	PETROL 95 ULP	PETROL 93 ULP & LRP	DIESEL 0.05%	DIESEL 0.005%	ILL. PAR.
GAUTENG PUMP PRICE (SA c/l) AS FROM 07/12/2017	1 476.000	1 449.000	-	-	-
WHOLESALE PRICE (SA c/l) AS FROM 07/12/2017	-	-	1 295.630	1 302.030	865.388
SINGLE NATIONAL MAXIMUM RETAIL PRICE	-	-	-	-	1 119.000
BASIC FUEL PRICE - 26/12/2017 (SA c/l)	622.874	611.853	637.761	639.993	639.416
PRESS RELEASE CONTRIBUTION TO BFP 05/12/2017 - 26/12/2017 (SA c/l)	686.170	669.170	684.630	691.030	695.128
UNIT OVER/(UNDER) RECOVERY - 26/12/2017 (SA c/l)	63.296	57.317	46.869	51.037	55.712
AVERAGE BASIC FUEL PRICE 01/12/2017 - 26/12/2017	643.138	631.218	653.571	656.784	655.801
AVERAGE UNIT OVER/(UNDER) RECOVERY 01/12/2017 - 26/12/2017	31.849	26.769	20.892	24.580	26.993

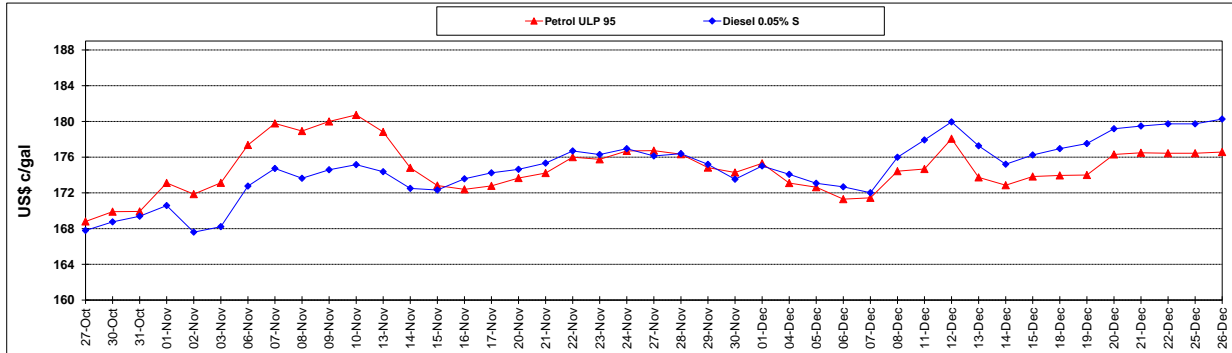
ANALYSIS MOVEMENT OF AVERAGE OVER/(UNDER) RECOVERY					
	PETROL 95	PETROL 93	DIESEL 0.05%	DIESEL 0.005%	ILL. PAR.
- MOVEMENT IN INTERNATIONAL PRODUCT PRICES	(8.141)	(12.480)	(19.747)	(16.260)	(13.784)
- MOVEMENT IN EXCHANGE RATE	39.990	39.249	40.639	40.839	40.778
AVERAGE UNIT OVER/(UNDER) RECOVERY 01/12/2017 - 26/12/2017	31.849	26.769	20.892	24.580	26.993

R/\$ EXCHANGE RATE - (R/\$ 12.7013 - 26/12/2017)

EXCHANGE RATE USED IN BASIC FUEL PRICE



INTERNATIONAL PRODUCT PRICES OF BASKET USED IN BASIC FUEL PRICE



BASIC FUEL PRICE IN SA CENTS PER LITRE

