

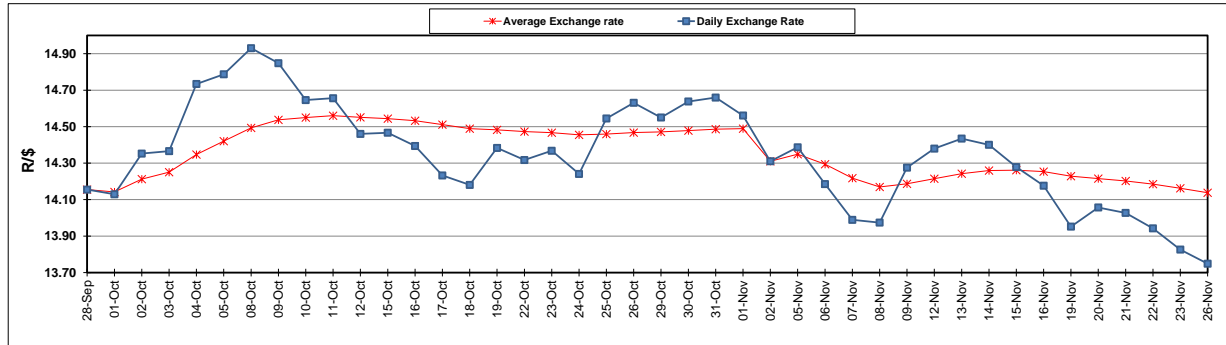
	PETROL 95 ULP	PETROL 93 ULP & LRP	DIESEL 0.05%	DIESEL 0.005%	ILL. PAR.
GAUTENG PUMP PRICE (SA c/l) AS FROM 07/11/2018	1 708.000	1 685.000	-	-	-
WHOLESALE PRICE (SA c/l) AS FROM 07/11/2018	-	-	1 612.750	1 620.150	1 085.088
SINGLE NATIONAL MAXIMUM RETAIL PRICE	-	-	-	-	1 409.000
BASIC FUEL PRICE - 26/11/2018 (SA c/l)	571.559	563.503	681.084	685.973	698.327
PRESS RELEASE CONTRIBUTION TO BFP 07/11/2018 - 26/11/2018 (SA c/l)	829.250	816.250	917.630	925.030	912.128
UNIT OVER/(UNDER) RECOVERY - 26/11/2018 (SA c/l)	257.691	252.747	236.546	239.057	213.801
AVERAGE BASIC FUEL PRICE 02/11/2018 - 26/11/2018	652.129	641.841	779.122	784.993	784.525
AVERAGE UNIT OVER/(UNDER) RECOVERY 02/11/2018 - 26/11/2018	180.990	178.278	133.920	134.920	122.662

ANALYSIS MOVEMENT OF AVERAGE OVER/(UNDER) RECOVERY

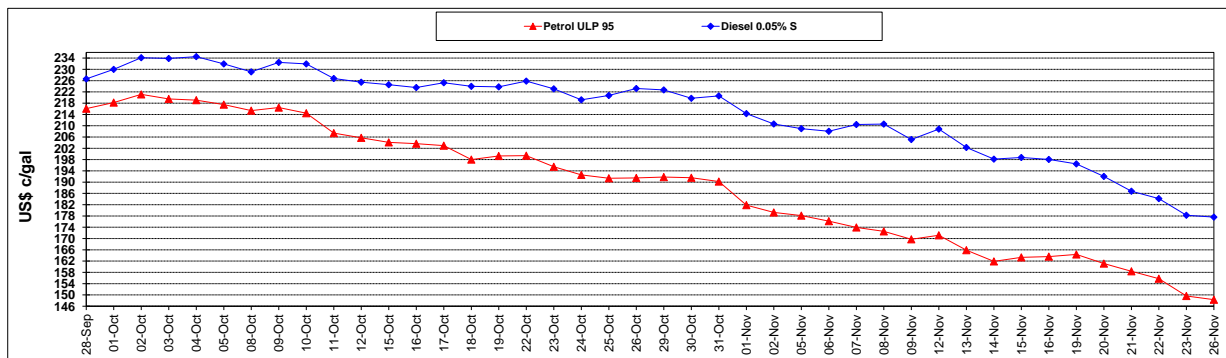
	PETROL 95	PETROL 93	DIESEL 0.05%	DIESEL 0.005%	ILL. PAR.
- MOVEMENT IN INTERNATIONAL PRODUCT PRICES	164.785	162.328	114.560	115.413	103.168
- MOVEMENT IN EXCHANGE RATE	16.204	15.949	19.360	19.506	19.494
AVERAGE UNIT OVER/(UNDER) RECOVERY 02/11/2018 - 26/11/2018	180.990	178.278	133.920	134.920	122.662

R/\$ EXCHANGE RATE - (R/\$13.7488 - 26/11/2018)

EXCHANGE RATE USED IN BASIC FUEL PRICE



INTERNATIONAL PRODUCT PRICES OF BASKET USED IN BASIC FUEL PRICE



BASIC FUEL PRICE IN SA CENTS PER LITRE

