

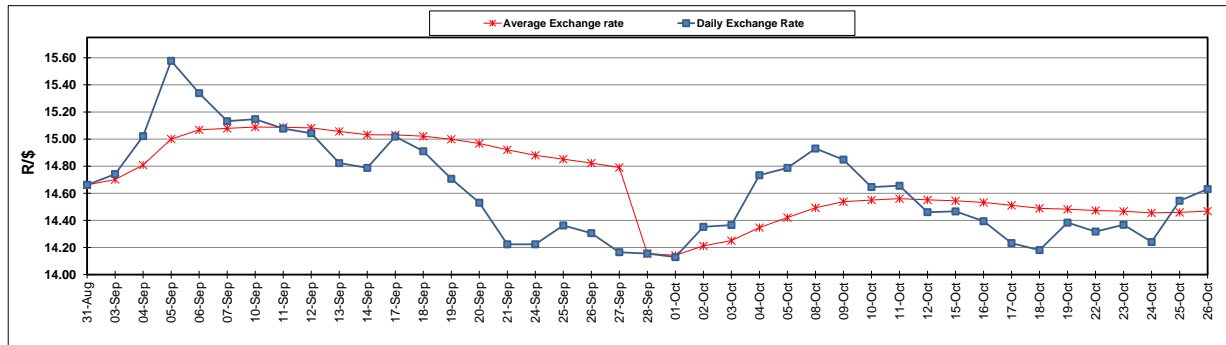
	PETROL 95 ULP	PETROL 93 ULP & LRP	DIESEL 0.05%	DIESEL 0.005%	ILL. PAR.
GAUTENG PUMP PRICE (SA c/l) AS FROM 03/10/2018	1 708.000	1 685.000	-	-	-
WHOLESALE PRICE (SA c/l) AS FROM 03/10/2018	-	-	1 564.830	1 569.230	1 057.088
SINGLE NATIONAL MAXIMUM RETAIL PRICE	-	-	-	-	1 372.000
BASIC FUEL PRICE - 26/10/2018 (SA c/l)	774.608	763.569	900.913	906.396	890.700
PRESS RELEASE CONTRIBUTION TO BFP 03/10/2018 - 26/10/2018 (SA c/l)	851.170	838.170	891.630	896.030	884.128
UNIT OVER/(UNDER) RECOVERY - 26/10/2018 (SA c/l)	76.562	74.601	(9.283)	(10.366)	(6.572)
AVERAGE BASIC FUEL PRICE 28/09/2018 - 26/10/2018	826.314	813.480	906.185	912.942	902.849
AVERAGE UNIT OVER/(UNDER) RECOVERY 28/09/2018 - 26/10/2018	10.570	10.547	(32.270)	(34.626)	(33.578)

ANALYSIS MOVEMENT OF AVERAGE OVER/(UNDER) RECOVERY

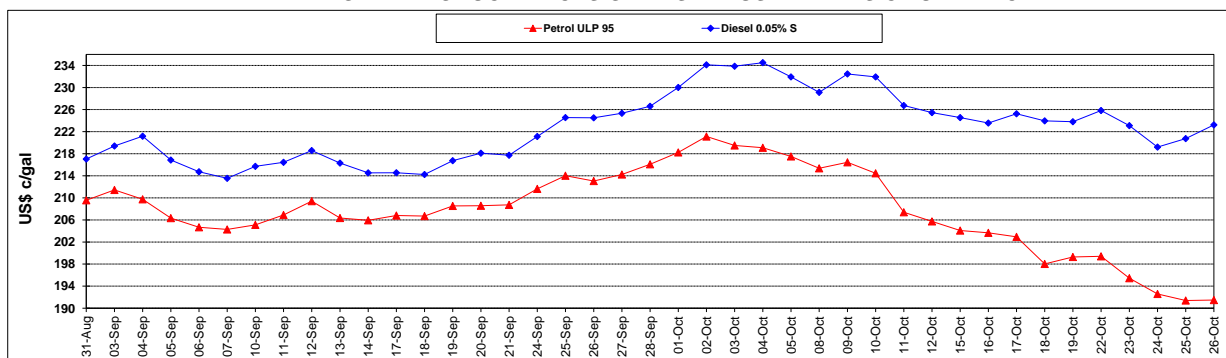
	PETROL 95	PETROL 93	DIESEL 0.05%	DIESEL 0.005%	ILL. PAR.
- MOVEMENT IN INTERNATIONAL PRODUCT PRICES	(7.826)	(7.564)	(52.444)	(54.951)	(53.678)
- MOVEMENT IN EXCHANGE RATE	18.396	18.111	20.175	20.325	20.100
AVERAGE UNIT OVER/(UNDER) RECOVERY 28/09/2018 - 26/10/2018	10.570	10.547	(32.270)	(34.626)	(33.578)

R/\$ EXCHANGE RATE - (R/\$14.6308 - 26/10/2018)

EXCHANGE RATE USED IN BASIC FUEL PRICE



INTERNATIONAL PRODUCT PRICES OF BASKET USED IN BASIC FUEL PRICE



BASIC FUEL PRICE IN SA CENTS PER LITRE

