

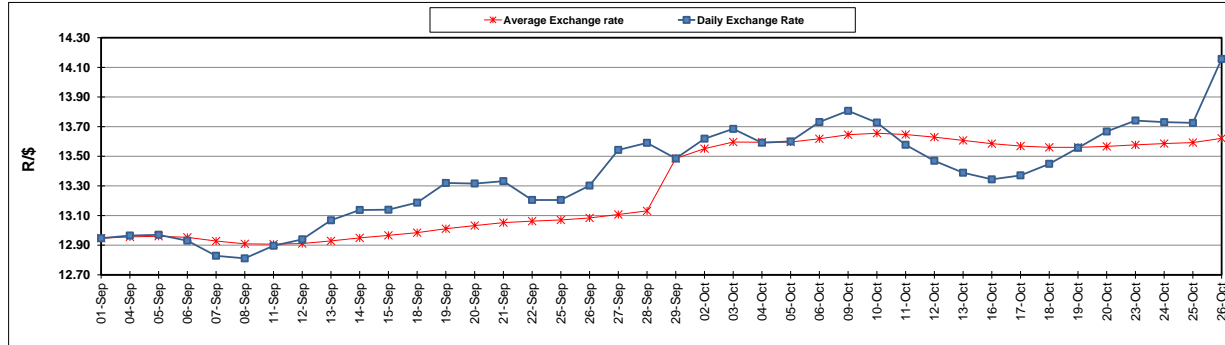
	PETROL 95 ULP	PETROL 93 ULP & LRP	DIESEL 0.05%	DIESEL 0.005%	ILL. PAR.
GAUTENG PUMP PRICE (SA c/l) AS FROM 04/10/2017	1 401.000	1 374.000	-	-	-
WHOLESALE PRICE (SA c/l) AS FROM 04/10/2017	-	-	1 212.330	1 217.730	771.088
SINGLE NATIONAL MAXIMUM RETAIL PRICE	-	-	-	-	992.000
BASIC FUEL PRICE - 26/10/2017 (SA c/l)	653.631	638.715	650.197	659.421	652.276
PRESS RELEASE CONTRIBUTION TO BFP 04/10/2017 - 26/10/2017 (SA c/l)	615.070	598.070	600.630	606.030	600.128
UNIT OVER/(UNDER) RECOVERY (SA c/l) - 26/10/2017	(38.561)	(40.645)	(49.567)	(53.391)	(52.148)
AVERAGE BASIC FUEL PRICE 29/09/2017 - 26/10/2017	615.662	599.871	617.569	626.972	614.292
AVERAGE UNIT OVER/(UNDER) RECOVERY 29/09/2017 - 26/10/2017	(4.942)	(5.551)	(23.239)	(27.242)	(20.014)

ANALYSIS MOVEMENT OF AVERAGE OVER/(UNDER) RECOVERY

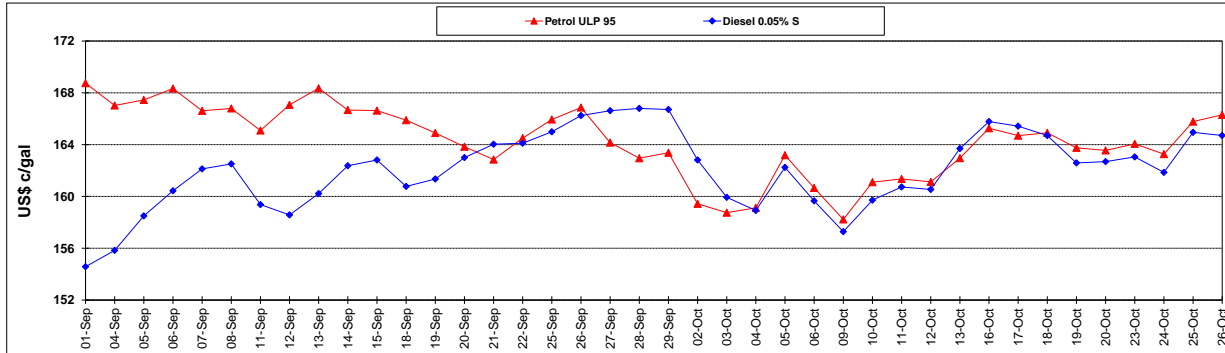
	PETROL 95	PETROL 93	DIESEL 0.05%	DIESEL 0.005%	ILL. PAR.
- MOVEMENT IN INTERNATIONAL PRODUCT PRICES	17.174	15.998	(1.054)	(4.720)	2.053
- MOVEMENT IN EXCHANGE RATE	(22.116)	(21.549)	(22.185)	(22.522)	(22.067)
AVERAGE UNIT OVER/(UNDER) RECOVERY 29/09/2017 - 26/10/2017	(4.942)	(5.551)	(23.239)	(27.242)	(20.014)

R/\$ EXCHANGE RATE - (R/\$ 14.1563- 26/10/2017)

EXCHANGE RATE USED IN BASIC FUEL PRICE



INTERNATIONAL PRODUCT PRICES OF BASKET USED IN BASIC FUEL PRICE



BASIC FUEL PRICE IN SA CENTS PER LITRE

