

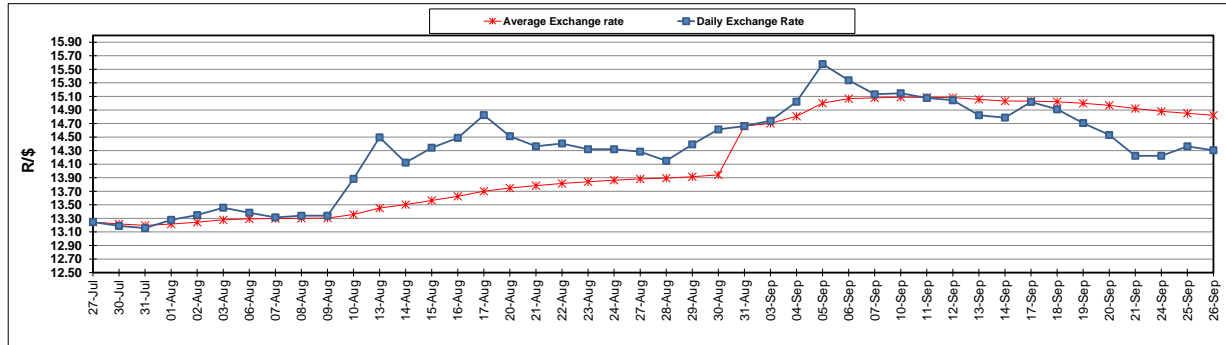
	PETROL 95 ULP	PETROL 93 ULP & LRP	DIESEL 0.05%	DIESEL 0.005%	ILL. PAR.
GAUTENG PUMP PRICE (SA c/l) AS FROM 05/09/2018	1 608.000	1 586.000	-	-	-
WHOLESALE PRICE (SA c/l) AS FROM 05/09/2018	-	-	1 440.830	1 445.230	953.088
SINGLE NATIONAL MAXIMUM RETAIL PRICE	-	-	-	-	1 233.000
BASIC FUEL PRICE - 26/09/2018 (SA c/l)	840.390	828.875	886.892	891.820	877.926
PRESS RELEASE CONTRIBUTION TO BFP 05/09/2018 - 26/09/2018 (SA c/l)	751.170	739.170	767.630	772.030	780.128
UNIT OVER/(UNDER) RECOVERY - 26/09/2018 (SA c/l)	(89.220)	(89.705)	(119.262)	(119.790)	(97.798)
AVERAGE BASIC FUEL PRICE 31/08/2018 - 26/09/2018	851.647	839.038	891.620	896.346	884.681
AVERAGE UNIT OVER/(UNDER) RECOVERY 31/08/2018 - 26/09/2018	(100.493)	(99.884)	(123.990)	(124.316)	(104.553)

ANALYSIS MOVEMENT OF AVERAGE OVER/(UNDER) RECOVERY

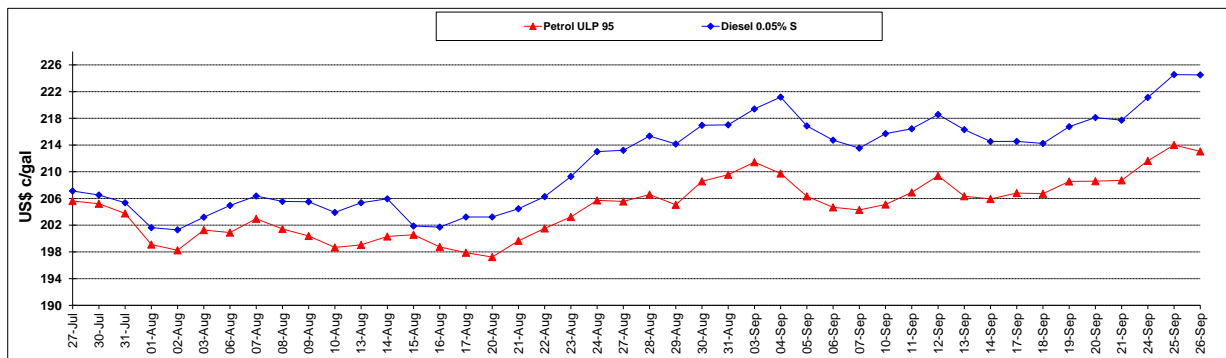
	PETROL 95	PETROL 93	DIESEL 0.05%	DIESEL 0.005%	ILL. PAR.
- MOVEMENT IN INTERNATIONAL PRODUCT PRICES	(49.944)	(50.083)	(71.068)	(71.114)	(52.043)
- MOVEMENT IN EXCHANGE RATE	(50.549)	(49.801)	(52.922)	(53.202)	(52.510)
AVERAGE UNIT OVER/(UNDER) RECOVERY 31/08/2018 - 26/09/2018	(100.493)	(99.884)	(123.990)	(124.316)	(104.553)

R/\$ EXCHANGE RATE - (R/\$14.3053 - 26/09/2018)

EXCHANGE RATE USED IN BASIC FUEL PRICE



INTERNATIONAL PRODUCT PRICES OF BASKET USED IN BASIC FUEL PRICE



BASIC FUEL PRICE IN SA CENTS PER LITRE

