

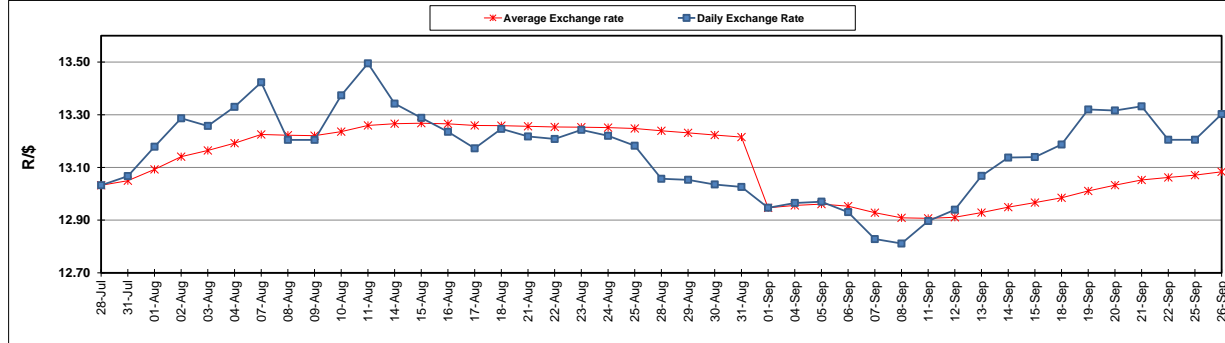
	PETROL 95 ULP	PETROL 93 ULP & LRP	DIESEL 0.05%	DIESEL 0.005%	ILL. PAR.
GAUTENG PUMP PRICE (SA c/l) AS FROM 06/09/2017	1 372.000	1 349.000	-	-	-
WHOLESALE PRICE (SA c/l) AS FROM 06/09/2017	-	-	1 170.330	1 175.730	732.088
SINGLE NATIONAL MAXIMUM RETAIL PRICE	-	-	-	-	941.000
BASIC FUEL PRICE - 26/09/2017 (SA c/l)	617.359	603.343	617.658	623.758	617.986
PRESS RELEASE CONTRIBUTION TO BFP 06/09/2017 - 26/09/2017 (SA c/l)	586.070	573.070	558.630	564.030	561.128
UNIT OVER/(UNDER) RECOVERY (SA c/l) - 26/09/2017	(31.289)	(30.273)	(59.028)	(59.728)	(56.858)
AVERAGE BASIC FUEL PRICE 01/09/2017 - 26/09/2017	605.362	588.968	590.195	595.152	587.505
AVERAGE UNIT OVER/(UNDER) RECOVERY 01/09/2017 - 26/09/2017	(29.692)	(26.298)	(38.898)	(38.456)	(34.544)

### ANALYSIS MOVEMENT OF AVERAGE OVER/(UNDER) RECOVERY

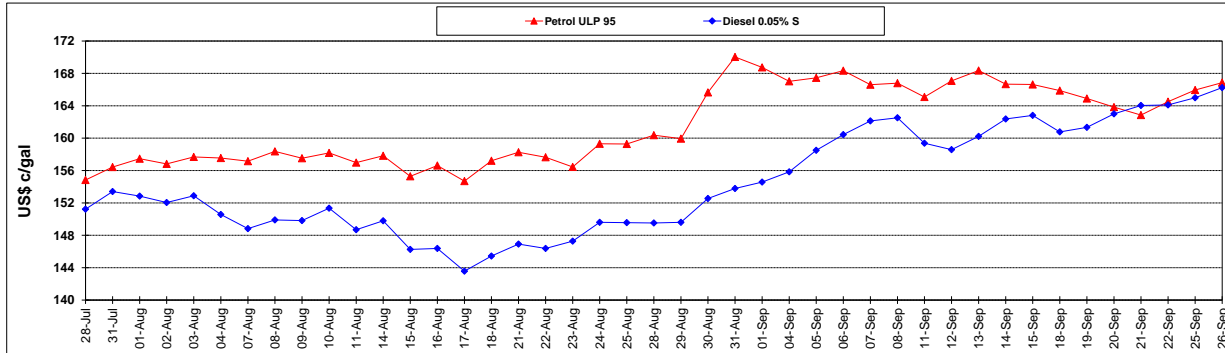
	PETROL 95	PETROL 93	DIESEL 0.05%	DIESEL 0.005%	ILL. PAR.
- MOVEMENT IN INTERNATIONAL PRODUCT PRICES	(35.790)	(32.231)	(44.844)	(44.450)	(40.462)
- MOVEMENT IN EXCHANGE RATE	6.098	5.933	5.946	5.995	5.918
AVERAGE UNIT OVER/(UNDER) RECOVERY 01/09/2017 - 26/09/2017	(29.692)	(26.298)	(38.898)	(38.456)	(34.544)

**R/\$ EXCHANGE RATE - (R/\$13.3025 - 26/09/2017)**

### EXCHANGE RATE USED IN BASIC FUEL PRICE



### INTERNATIONAL PRODUCT PRICES OF BASKET USED IN BASIC FUEL PRICE



### BASIC FUEL PRICE IN SA CENTS PER LITRE

