

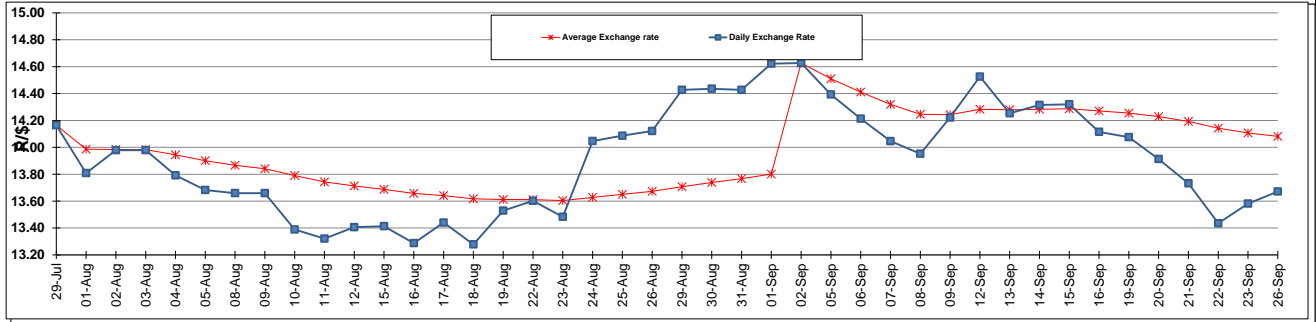
	PETROL 95 ULP	PETROL 93 ULP & LRP	DIESEL 0.05%	DIESEL 0.005%	ILL. PAR.
GAUTENG PUMP PRICE (SA c/l) AS FROM 07/09/2016	1 217.000	1 190.000	-	-	-
WHOLESALE PRICE (SA c/l) AS FROM 07/09/2016	-	-	1 048.870	1 052.270	647.628
SINGLE NATIONAL MAXIMUM RETAIL PRICE	-	-	-	-	828.000
BASIC FUEL PRICE - 26/09/2016 (SA c/l)	526.114	511.997	501.441	503.638	501.878
PRESS RELEASE CONTRIBUTION TO BFP 07/09/2016 - 26/09/2016 (SA c/l)	495.970	478.970	482.630	486.030	486.128
UNIT OVER/(UNDER) RECOVERY (SA c/l) - 26/09/2016	(30.144)	(33.027)	(18.811)	(17.608)	(15.750)
AVERAGE BASIC FUEL PRICE 02/09/2016 - 26/09/2016	544.025	528.520	515.132	517.931	516.705
AVERAGE UNIT OVER/(UNDER) RECOVERY 02/09/2016 - 26/09/2016	(44.878)	(46.374)	(24.031)	(23.254)	(22.283)

ANALYSIS MOVEMENT OF AVERAGE OVER/(UNDER) RECOVERY

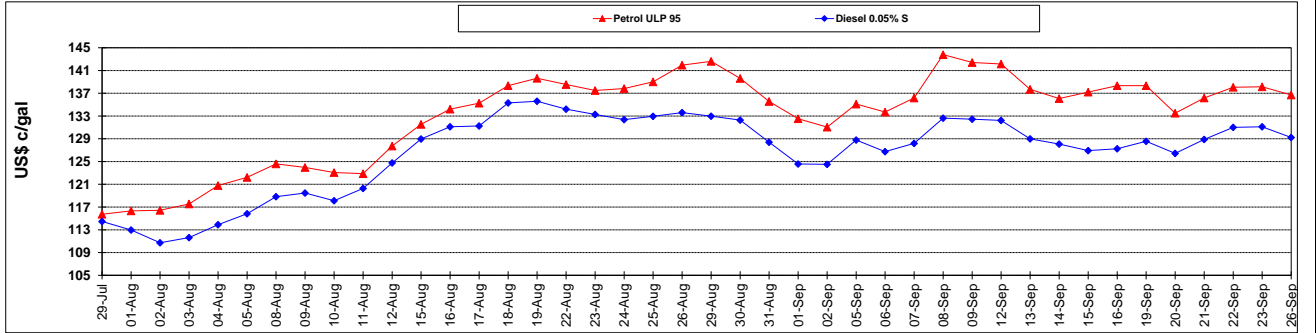
	PETROL 95	PETROL 93	DIESEL 0.05%	DIESEL 0.005%	ILL. PAR.
- MOVEMENT IN INTERNATIONAL PRODUCT PRICES	(34.054)	(35.857)	(13.781)	(12.948)	(12.002)
- MOVEMENT IN EXCHANGE RATE	(10.825)	(10.517)	(10.250)	(10.306)	(10.281)
AVERAGE UNIT OVER/(UNDER) RECOVERY 02/09/2016 - 26/09/2016	(44.878)	(46.374)	(24.031)	(23.254)	(22.283)

R/\$ EXCHANGE RATE - (R/\$ 13.6715 - 26/09/2016)

EXCHANGE RATE USED IN BASIC FUEL PRICE



INTERNATIONAL PRODUCT PRICES OF BASKET USED IN BASIC FUEL PRICE



BASIC FUEL PRICE IN SA CENTS PER LITRE

