

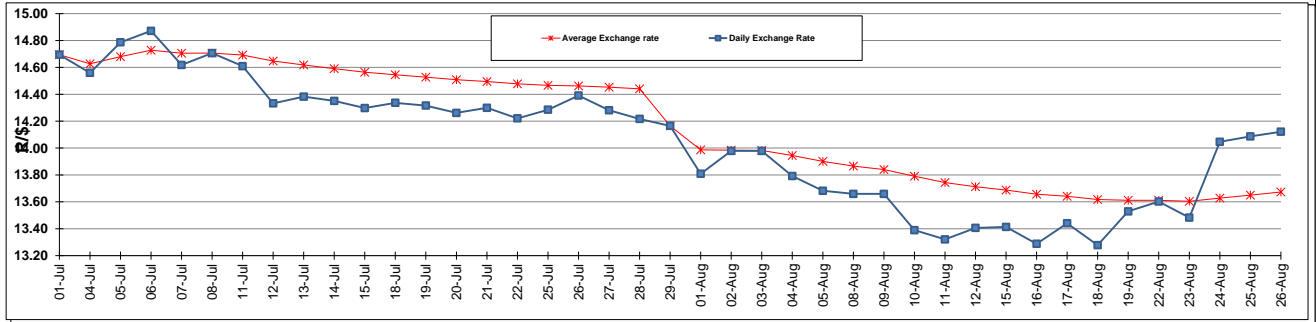
	PETROL 95 ULP	PETROL 93 ULP & LRP	DIESEL 0.05%	DIESEL 0.005%	ILL. PAR.
GAUTENG PUMP PRICE (SA c/l) AS FROM 03/08/2016	1 235.000	1 208.000	-	-	-
WHOLESALE PRICE (SA c/l) AS FROM 03/08/2016	-	-	1 096.870	1 101.270	694.628
SINGLE NATIONAL MAXIMUM RETAIL PRICE	-	-	-	-	891.000
BASIC FUEL PRICE - 26/08/2016 (SA c/l)	564.014	547.648	535.371	538.851	537.013
PRESS RELEASE CONTRIBUTION TO BFP 03/08/2116 - 26/08/2016 (SA c/l)	513.970	496.970	530.630	535.030	533.128
UNIT OVER/(UNDER) RECOVERY (SA c/l) - 26/08/2016	(50.044)	(50.678)	(4.741)	(3.821)	(3.885)
AVERAGE BASIC FUEL PRICE 29/07/2116 - 26/08/2016	498.525	483.497	484.471	487.865	485.393
AVERAGE UNIT OVER/(UNDER) RECOVERY 29/07/2016 - 26/08/2016	29.588	27.616	56.730	57.593	57.163

### ANALYSIS MOVEMENT OF AVERAGE OVER/(UNDER) RECOVERY

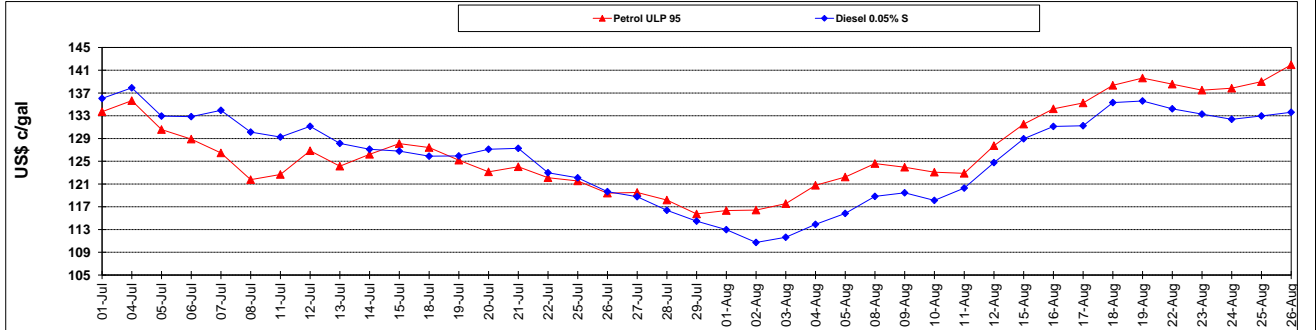
	PETROL 95	PETROL 93	DIESEL 0.05%	DIESEL 0.005%	ILL. PAR.
- MOVEMENT IN INTERNATIONAL PRODUCT PRICES	1.590	0.462	29.521	30.194	29.903
- MOVEMENT IN EXCHANGE RATE	27.998	27.154	27.209	27.400	27.261
AVERAGE UNIT OVER/(UNDER) RECOVERY 29/07/2016 - 26/08/2016	29.588	27.616	56.730	57.593	57.163

**R/\$ EXCHANGE RATE - (R/\$ 14.1216 - 26/08/2016)**

### EXCHANGE RATE USED IN BASIC FUEL PRICE



### INTERNATIONAL PRODUCT PRICES OF BASKET USED IN BASIC FUEL PRICE



### BASIC FUEL PRICE IN SA CENTS PER LITRE

