

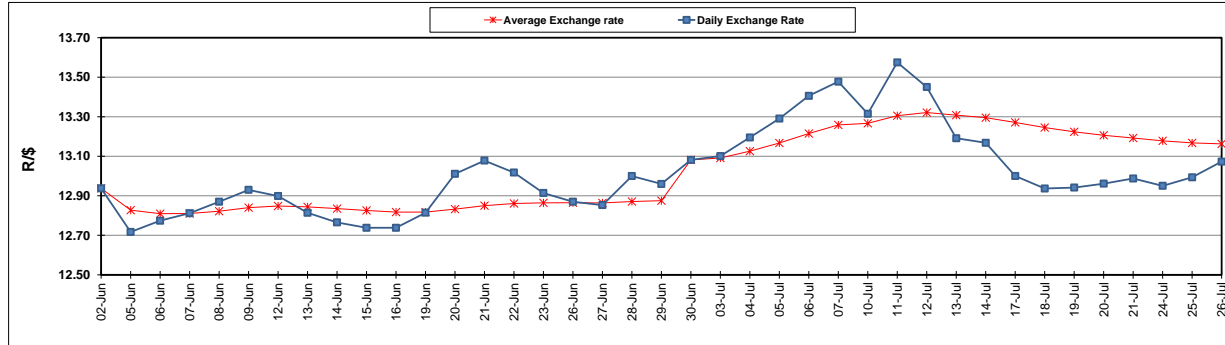
	PETROL 95 ULP	PETROL 93 ULP & LRP	DIESEL 0.05%	DIESEL 0.005%	ILL. PAR.
GAUTENG PUMP PRICE (SA c/l) AS FROM 05/07/2017	1 286.000	1 263.000	-	-	-
WHOLESALE PRICE (SA c/l) AS FROM 05/07/2017	-	-	1 097.330	1 101.730	657.088
SINGLE NATIONAL MAXIMUM RETAIL PRICE	-	-	-	-	841.000
BASIC FUEL PRICE - 26/07/2017 (SA c/l)	549.254	534.476	542.902	549.229	538.076
PRESS RELEASE CONTRIBUTION TO BFP 05/07/2017 - 26/07/2017 (SA c/l)	504.670	491.670	485.630	490.030	486.128
UNIT OVER/(UNDER) RECOVERY (SA c/l) - 26/07/2017	(44.584)	(42.806)	(57.272)	(59.199)	(51.948)
AVERAGE BASIC FUEL PRICE 30/06/2017 - 26/07/2017	533.312	517.945	522.847	528.685	520.176
AVERAGE UNIT OVER/(UNDER) RECOVERY 30/06/2017 - 26/07/2017	(17.905)	(15.381)	(27.744)	(29.182)	(25.048)

ANALYSIS MOVEMENT OF AVERAGE OVER/(UNDER) RECOVERY

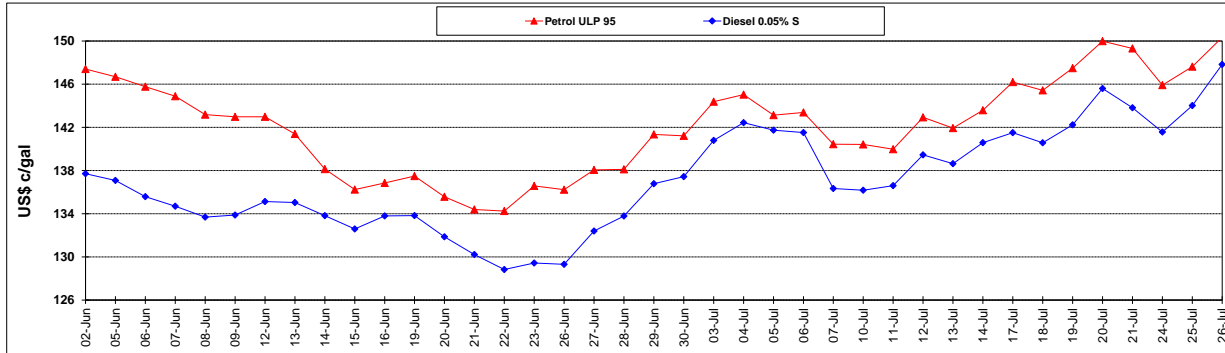
	PETROL 95	PETROL 93	DIESEL 0.05%	DIESEL 0.005%	ILL. PAR.
- MOVEMENT IN INTERNATIONAL PRODUCT PRICES	(6.265)	(4.075)	(16.331)	(17.642)	(13.694)
- MOVEMENT IN EXCHANGE RATE	(11.640)	(11.305)	(11.412)	(11.539)	(11.354)
AVERAGE UNIT OVER/(UNDER) RECOVERY 30/06/2017 - 26/07/2017	(17.905)	(15.381)	(27.744)	(29.182)	(25.048)

R/\$ EXCHANGE RATE - (R/\$ 13.0730- 26/07/2017)

EXCHANGE RATE USED IN BASIC FUEL PRICE



INTERNATIONAL PRODUCT PRICES OF BASKET USED IN BASIC FUEL PRICE



BASIC FUEL PRICE IN SA CENTS PER LITRE

