

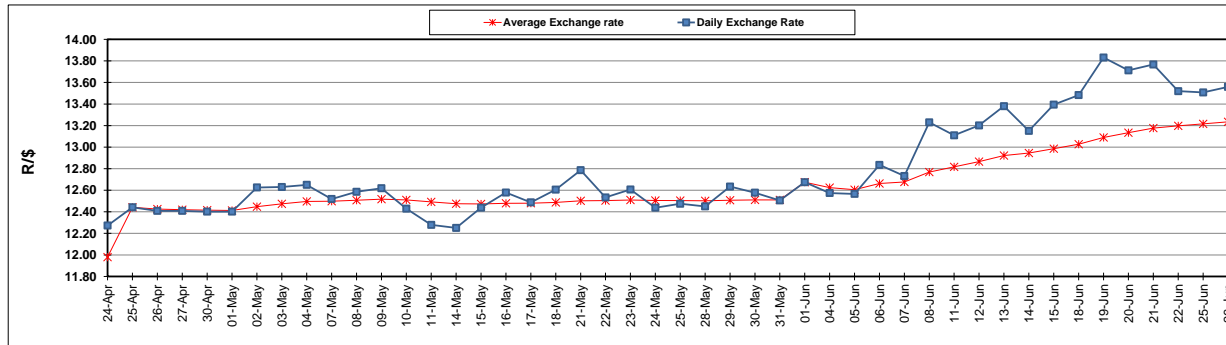
	PETROL 95 ULP	PETROL 93 ULP & LRP	DIESEL 0.05%	DIESEL 0.005%	ILL. PAR.
GAUTENG PUMP PRICE (SA c/l) AS FROM 06/06/2018	1 579.000	1 554.000	-	-	-
WHOLESALE PRICE (SA c/l) AS FROM 06/06/2018	-	-	1 418.830	1 425.230	927.088
SINGLE NATIONAL MAXIMUM RETAIL PRICE	-	-	-	-	1 198.000
BASIC FUEL PRICE - 26/06/2018 (SA c/l)	739.023	729.532	757.267	761.787	764.921
PRESS RELEASE CONTRIBUTION TO BFP 06/06/2018 - 26/06/2018 (SA c/l)	727.070	712.070	745.630	752.030	754.128
UNIT OVER/(UNDER) RECOVERY - 26/06/2018 (SA c/l)	(11.953)	(17.462)	(11.637)	(9.757)	(10.793)
AVERAGE BASIC FUEL PRICE 01/06/2018 - 26/06/2018	735.006	723.497	755.102	759.382	759.143
AVERAGE UNIT OVER/(UNDER) RECOVERY 01/06/2018 - 26/06/2018	(21.603)	(25.093)	(23.639)	(21.852)	(18.682)

### ANALYSIS MOVEMENT OF AVERAGE OVER/(UNDER) RECOVERY

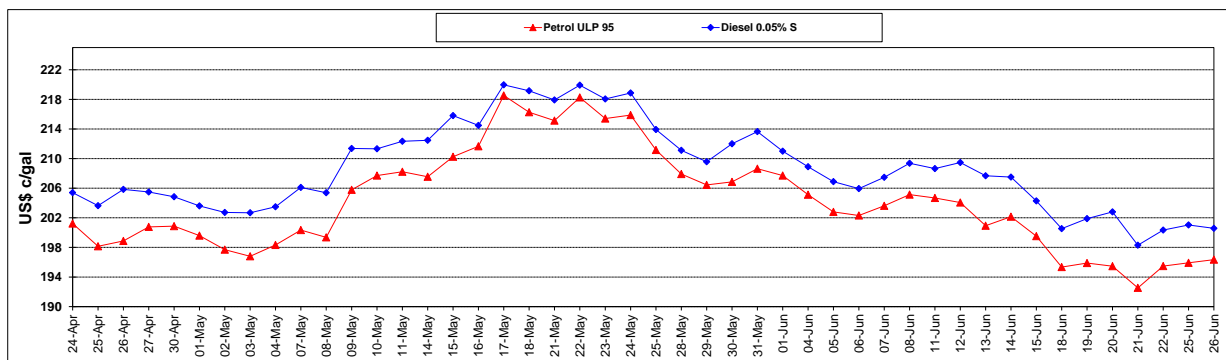
	PETROL 95	PETROL 93	DIESEL 0.05%	DIESEL 0.005%	ILL. PAR.
- MOVEMENT IN INTERNATIONAL PRODUCT PRICES	18.655	14.534	17.720	19.741	22.898
- MOVEMENT IN EXCHANGE RATE	(40.258)	(39.628)	(41.359)	(41.593)	(41.580)
AVERAGE UNIT OVER/(UNDER) RECOVERY 01/06/2018 - 26/06/2018	(21.603)	(25.093)	(23.639)	(21.852)	(18.682)

### R/\$ EXCHANGE RATE - (R/\$13.5590 - 26/06/2018)

#### EXCHANGE RATE USED IN BASIC FUEL PRICE



#### INTERNATIONAL PRODUCT PRICES OF BASKET USED IN BASIC FUEL PRICE



#### BASIC FUEL PRICE IN SA CENTS PER LITRE

