

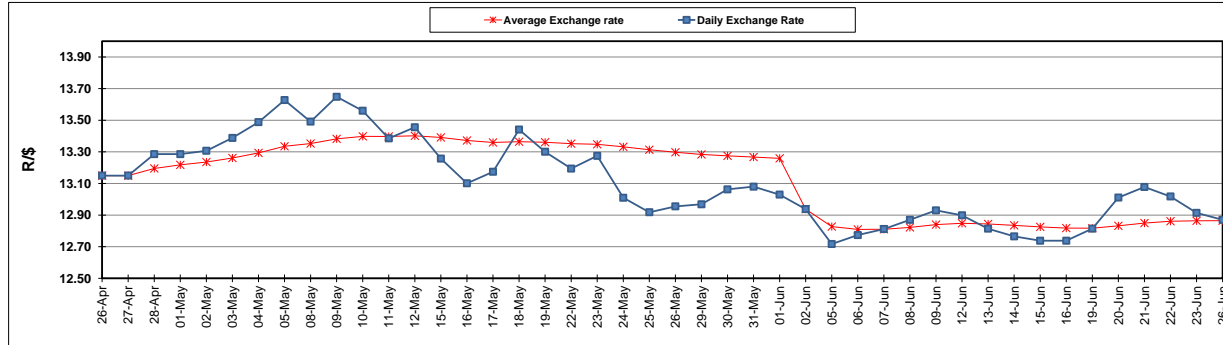
	PETROL 95 ULP	PETROL 93 ULP & LRP	DIESEL 0.05%	DIESEL 0.005%	ILL. PAR.
GAUTENG PUMP PRICE (SA c/l) AS FROM 07/06/2017	1 354.000	1 332.000	-	-	-
WHOLESALE PRICE (SA c/l) AS FROM 07/06/2017	-	-	1 157.330	1 161.730	714.088
SINGLE NATIONAL MAXIMUM RETAIL PRICE	-	-	-	-	917.000
BASIC FUEL 26/06/2017 (SA c/l)	496.509	480.879	475.471	480.373	477.832
PRESS RELEASE CONTRIBUTION TO BFP 07/06/2017 - 26/06/2017 (SA c/l)	572.670	560.670	545.630	550.030	543.128
UNIT OVER/(UNDER) RECOVERY (SA c/l) - 26/06/2017	76.161	79.791	70.159	69.657	65.296
AVERAGE BASIC FUEL PRICE 02/06/2017 - 26/06/2017	509.360	496.734	488.942	492.829	488.911
AVERAGE UNIT OVER/(UNDER) RECOVERY 02/06/2017- 26/06/2017	67.722	68.348	60.747	61.260	58.099

ANALYSIS MOVEMENT OF AVERAGE OVER/(UNDER) RECOVERY

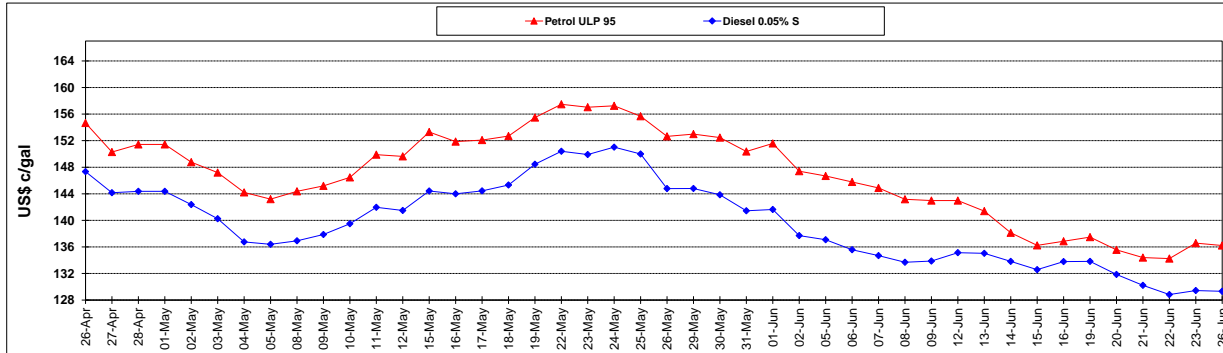
	PETROL 95	PETROL 93	DIESEL 0.05%	DIESEL 0.005%	ILL. PAR.
- MOVEMENT IN INTERNATIONAL PRODUCT PRICES	65.137	65.827	58.265	58.758	55.617
- MOVEMENT IN EXCHANGE RATE	2.585	2.521	2.482	2.502	2.482
AVERAGE UNIT OVER/(UNDER) RECOVERY 02/06/2017 - 26/06/2017	67.722	68.348	60.747	61.260	58.099

R/\$ EXCHANGE RATE - (R/\$ 12.8700 - 26/06/2017)

EXCHANGE RATE USED IN BASIC FUEL PRICE



INTERNATIONAL PRODUCT PRICES OF BASKET USED IN BASIC FUEL PRICE



BASIC FUEL PRICE IN SA CENTS PER LITRE

