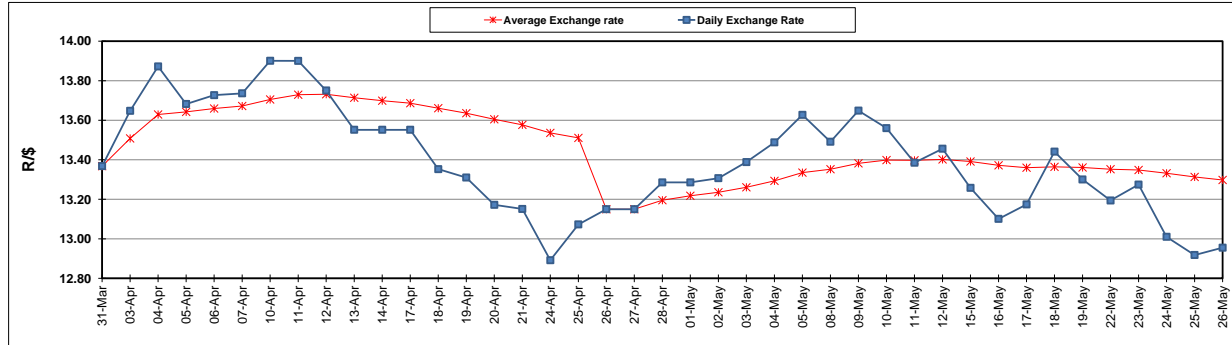


	PETROL 95 ULP	PETROL 93 ULP & LRP	DIESEL 0.05%	DIESEL 0.005%	ILL. PAR.
GAUTENG PUMP PRICE (SA c/l) AS FROM 03/05/2017	1 379.000	1 357.000	-	-	-
WHOLESALE PRICE (SA c/l) AS FROM 03/05/2017	-	-	1 180.330	1 184.730	736.088
SINGLE NATIONAL MAXIMUM RETAIL PRICE	-	-	-	-	947.000
BASIC FUEL PRICE - 26/05/2017 (SA c/l)	557.127	542.441	532.795	536.656	532.985
PRESS RELEASE CONTRIBUTION TO BFP 03/05/2017 - 26/05/2017 (SA c/l)	597.670	585.670	568.630	573.030	565.128
UNIT OVER/(UNDER) RECOVERY (SA c/l) - 26/05/2017	40.543	43.229	35.835	36.374	32.143
AVERAGE BASIC FUEL PRICE 26/04/2017 - 26/05/2017	565.205	549.382	542.513	546.058	537.870
AVERAGE UNIT OVER/(UNDER) RECOVERY 26/04/2017 - 26/05/2017	21.813	25.636	19.595	20.015	19.866

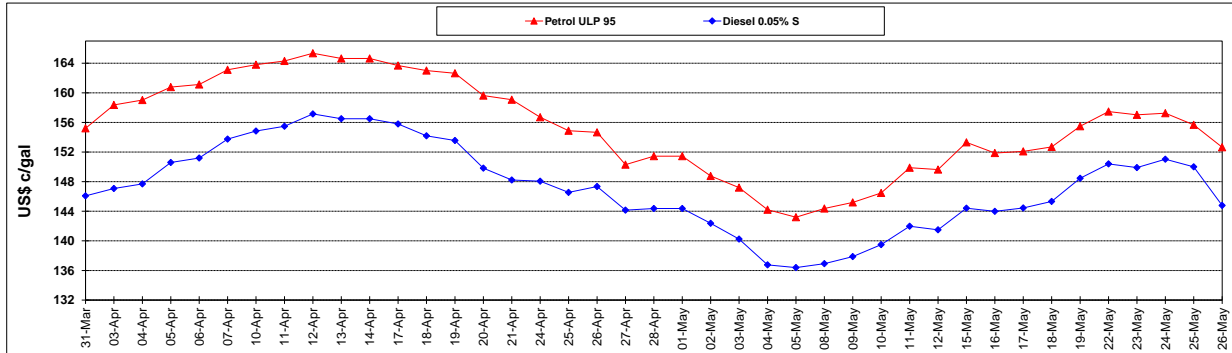
ANALYSIS MOVEMENT OF AVERAGE OVER/(UNDER) RECOVERY					
	PETROL 95	PETROL 93	DIESEL 0.05%	DIESEL 0.005%	ILL. PAR.
- MOVEMENT IN INTERNATIONAL PRODUCT PRICES	12.764	16.840	10.909	11.272	11.255
- MOVEMENT IN EXCHANGE RATE	9.049	8.796	8.686	8.743	8.612
AVERAGE UNIT OVER/(UNDER) RECOVERY 26/04/2017 - 26/05/2017	21.813	25.636	19.595	20.015	19.866

R/\$ EXCHANGE RATE - (R/\$ 12.9550 - 26/05/2017)

### EXCHANGE RATE USED IN BASIC FUEL PRICE



### INTERNATIONAL PRODUCT PRICES OF BASKET USED IN BASIC FUEL PRICE



### BASIC FUEL PRICE IN SA CENTS PER LITRE

