

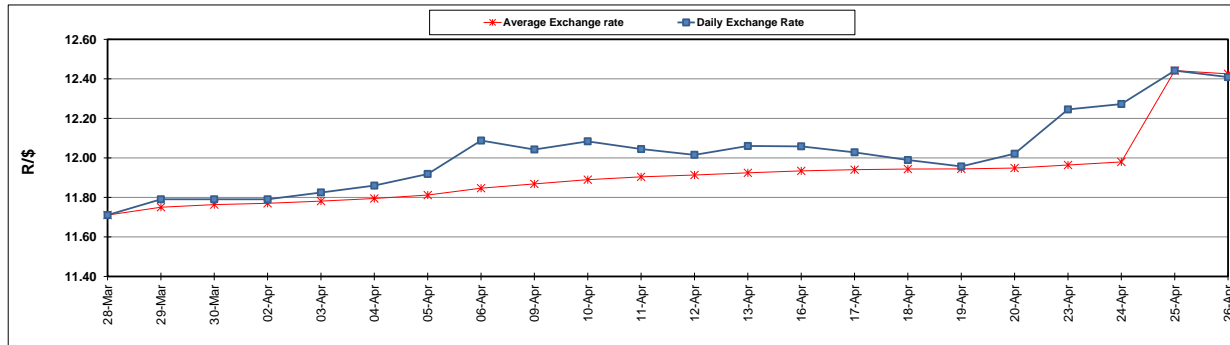
	PETROL 95 ULP	PETROL 93 ULP & LRP	DIESEL 0.05%	DIESEL 0.005%	ILL. PAR.
GAUTENG PUMP PRICE (SA c/l) AS FROM 02/05/2018	1 497.000	1 472.000	-	-	-
WHOLESALE PRICE (SA c/l) AS FROM 02/05/2018	-	-	1 333.830	1 338.230	845.088
SINGLE NATIONAL MAXIMUM RETAIL PRICE	-	-	-	-	1 089.000
BASIC FUEL PRICE - 26/04/2018 (SA c/l)	688.303	673.814	714.252	718.864	729.682
PRESS RELEASE CONTRIBUTION TO BFP 25/04/2018 - 26/04/2018 (SA c/l)	596.070	581.070	601.630	607.030	620.128
UNIT OVER/(UNDER) RECOVERY - 26/04/2018 (SA c/l)	(92.233)	(92.744)	(112.622)	(111.834)	(109.554)
AVERAGE BASIC FUEL PRICE 25/04/2018 - 26/04/2018	688.032	673.393	711.527	716.221	728.116
AVERAGE UNIT OVER/(UNDER) RECOVERY 25/04/2018 - 26/04/2018	(91.962)	(92.323)	(109.897)	(109.191)	(107.988)

### ANALYSIS MOVEMENT OF AVERAGE OVER/(UNDER) RECOVERY

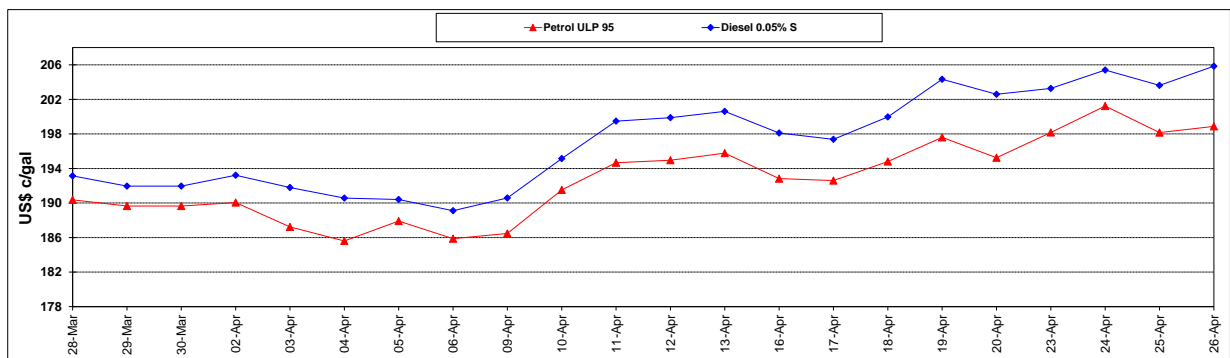
	PETROL 95	PETROL 93	DIESEL 0.05%	DIESEL 0.005%	ILL. PAR.
- MOVEMENT IN INTERNATIONAL PRODUCT PRICES	(67.288)	(68.174)	(84.380)	(83.506)	(81.876)
- MOVEMENT IN EXCHANGE RATE	(24.674)	(24.149)	(25.517)	(25.685)	(26.112)
AVERAGE UNIT OVER/(UNDER) RECOVERY 25/04/2018 - 26/04/2018	(91.962)	(92.323)	(109.897)	(109.191)	(107.988)

### R/\$ EXCHANGE RATE - (R/\$12.4088 - 26/04/2018)

#### EXCHANGE RATE USED IN BASIC FUEL PRICE



#### INTERNATIONAL PRODUCT PRICES OF BASKET USED IN BASIC FUEL PRICE



#### BASIC FUEL PRICE IN SA CENTS PER LITRE

