

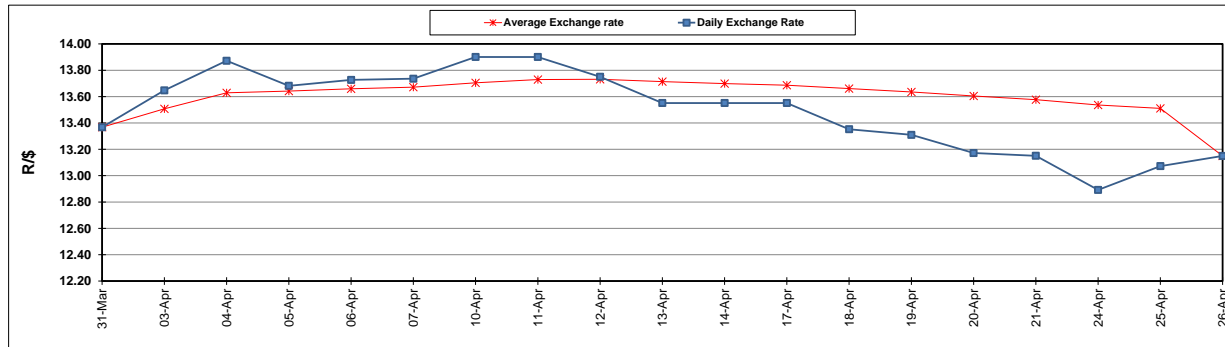
	PETROL 95 ULP	PETROL 93 ULP & LRP	DIESEL 0.05%	DIESEL 0.005%	ILL. PAR.
GAUTENG PUMP PRICE (SA c/l) AS FROM 03/05/2017	1 379.000	1 357.000	-	-	-
WHOLESALE PRICE (SA c/l) AS FROM 03/05/2017	-	-	1 180.330	1 184.730	736.088
SINGLE NATIONAL MAXIMUM RETAIL PRICE	-	-	-	-	947.000
BASIC FUEL PRICE - 26/04/2017 (SA c/l)	569.768	554.024	546.748	551.344	539.801
PRESS RELEASE CONTRIBUTION TO BFP 26/04/2017 - 26/04/2017 (SA c/l)	548.670	536.670	538.630	541.030	531.128
UNIT OVER/(UNDER) RECOVERY (SA c/l) - 26/04/2017	(21.098)	(17.354)	(8.118)	(10.314)	(8.673)
AVERAGE BASIC FUEL PRICE 26/04/2017 - 26/04/2017	569.768	554.024	546.748	551.344	539.801
AVERAGE UNIT OVER/(UNDER) RECOVERY 26/04/2017- 26/04/2017	(21.098)	(17.354)	(8.118)	(10.314)	(8.673)

### ANALYSIS MOVEMENT OF AVERAGE OVER/(UNDER) RECOVERY

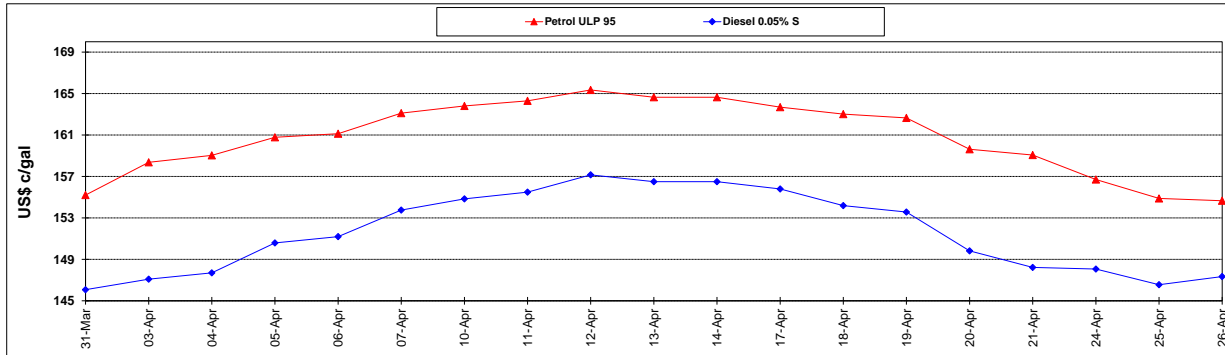
	PETROL 95	PETROL 93	DIESEL 0.05%	DIESEL 0.005%	ILL. PAR.
- MOVEMENT IN INTERNATIONAL PRODUCT PRICES	(36.727)	(32.551)	(23.115)	(25.437)	(23.480)
- MOVEMENT IN EXCHANGE RATE	15.629	15.197	14.997	15.123	14.807
AVERAGE UNIT OVER/(UNDER) RECOVERY 26/04/2017 - 26/04/2017	(21.098)	(17.354)	(8.118)	(10.314)	(8.673)

**R/\$ EXCHANGE RATE - (R/\$ 13.1498 - 26/04/2017)**

### EXCHANGE RATE USED IN BASIC FUEL PRICE



### INTERNATIONAL PRODUCT PRICES OF BASKET USED IN BASIC FUEL PRICE



### BASIC FUEL PRICE IN SA CENTS PER LITRE

