

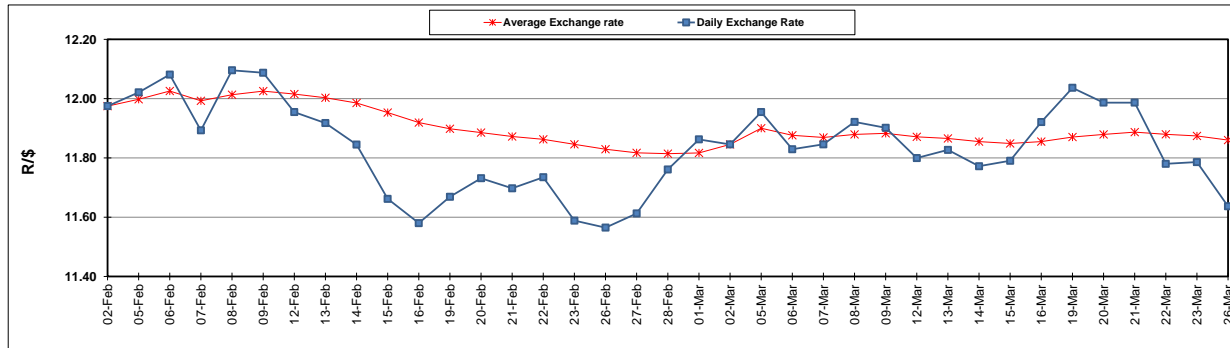
	PETROL 95 ULP	PETROL 93 ULP & LRP	DIESEL 0.05%	DIESEL 0.005%	ILL. PAR.
GAUTENG PUMP PRICE (SA c/l) AS FROM 07/03/2018	1 376.000	1 354.000	-	-	-
WHOLESALE PRICE (SA c/l) AS FROM 07/03/2018	-	-	1 209.630	1 215.030	795.388
SINGLE NATIONAL MAXIMUM RETAIL PRICE	-	-	-	-	1 026.000
BASIC FUEL PRICE - 26/03/2018 (SA c/l)	623.203	607.756	627.082	631.655	634.693
PRESS RELEASE CONTRIBUTION TO BFP 07/03/2018 - 26/03/2018 (SA c/l)	586.170	574.170	598.630	604.030	625.128
UNIT OVER/(UNDER) RECOVERY - 26/03/2018 (SA c/l)	(37.033)	(33.586)	(28.452)	(27.625)	(9.565)
AVERAGE BASIC FUEL PRICE 02/03/2018 - 26/03/2018	601.662	587.179	608.775	613.381	623.757
AVERAGE UNIT OVER/(UNDER) RECOVERY 02/03/2018 - 26/03/2018	(9.139)	(6.657)	(1.851)	(1.586)	5.430

ANALYSIS MOVEMENT OF AVERAGE OVER/(UNDER) RECOVERY

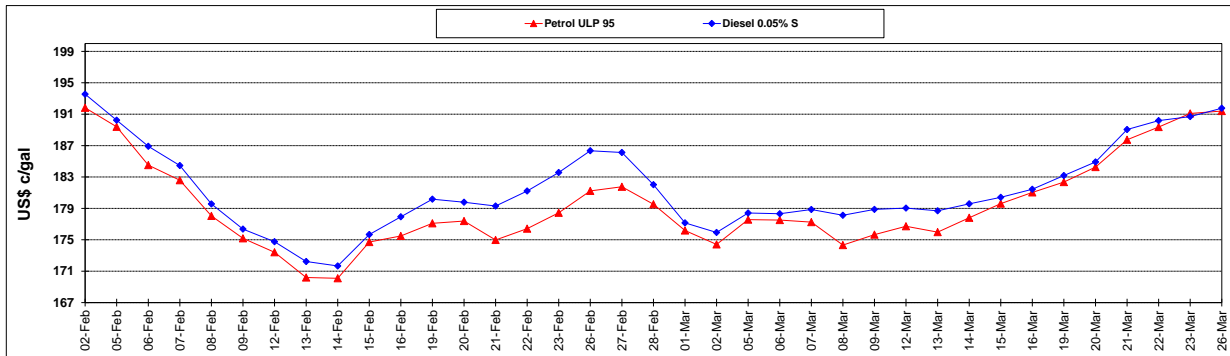
	PETROL 95	PETROL 93	DIESEL 0.05%	DIESEL 0.005%	ILL. PAR.
- MOVEMENT IN INTERNATIONAL PRODUCT PRICES	(6.942)	(4.512)	0.372	0.653	7.707
- MOVEMENT IN EXCHANGE RATE	(2.197)	(2.144)	(2.223)	(2.239)	(2.277)
AVERAGE UNIT OVER/(UNDER) RECOVERY 02/03/2018 - 26/03/2018	(9.139)	(6.657)	(1.851)	(1.586)	5.430

R/\$ EXCHANGE RATE - (R/\$11.6368 - 26/03/2018)

EXCHANGE RATE USED IN BASIC FUEL PRICE



INTERNATIONAL PRODUCT PRICES OF BASKET USED IN BASIC FUEL PRICE



BASIC FUEL PRICE IN SA CENTS PER LITRE

