

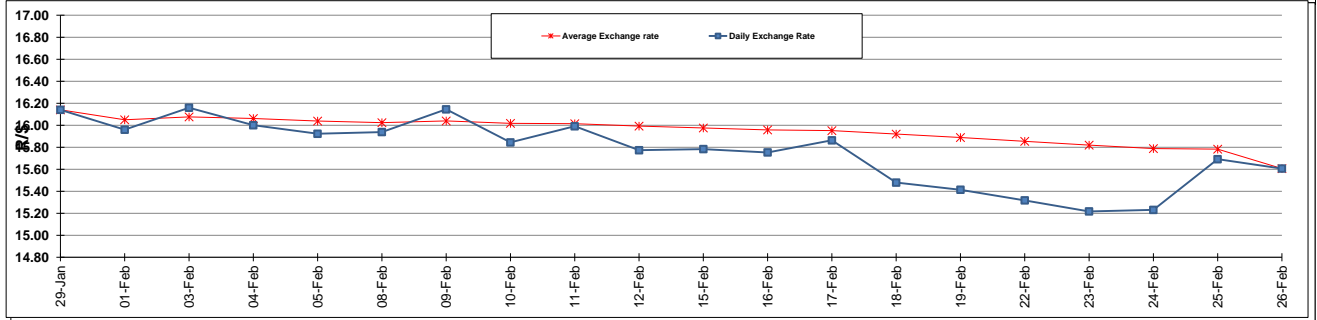
	PETROL 95 ULP	PETROL 93 ULP & LRP	DIESEL 0.05%	DIESEL 0.005%	ILL. PAR.
GAUTENG PUMP PRICE (SA c/l) AS FROM 02/03/2016	1 174.000	1 146.000	-	-	-
WHOLESALE PRICE (SA c/l) AS FROM 02/03/2016	-	-	958.170	961.570	605.028
SINGLE NATIONAL MAXIMUM RETAIL PRICE	-	-	-	-	772.000
BASIC FUEL PRICE - 26/02/2016 (SA c/l)	509.997	487.767	454.911	458.475	472.158
PRESS RELEASE CONTRIBUTION TO BFP 26/02/2016 - 26/02/2016 (SA c/l)	556.970	538.970	412.630	417.030	428.128
UNIT OVER/(UNDER) RECOVERY (SA c/l) - 26/02/2016	46.973	51.203	(42.281)	(41.445)	(44.030)
AVERAGE BASIC FUEL PRICE 26/02/2016 - 26/02/2016	509.997	487.767	454.911	458.475	472.158
AVERAGE UNIT OVER/(UNDER) RECOVERY 26/02/2016 - 26/02/2016	46.973	51.203	(42.281)	(41.445)	(44.030)

ANALYSIS MOVEMENT OF AVERAGE OVER/(UNDER) RECOVERY

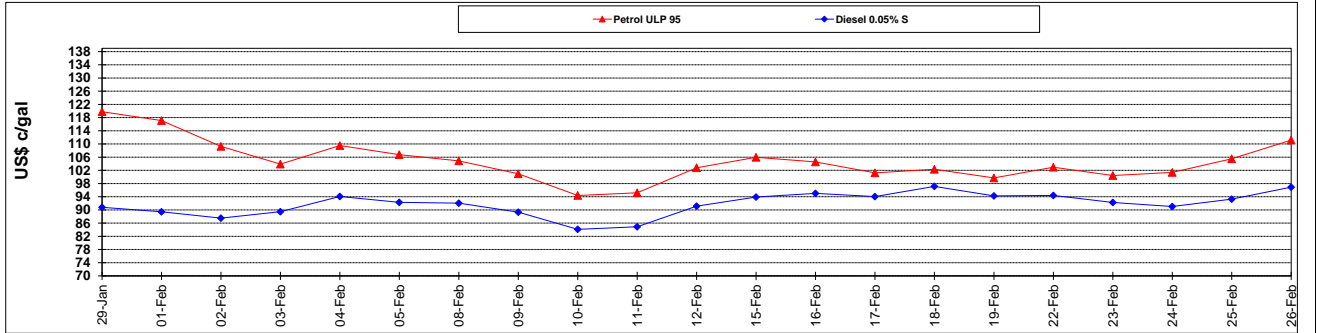
	PETROL 95	PETROL 93	DIESEL 0.05%	DIESEL 0.005%	ILL. PAR.
- MOVEMENT IN INTERNATIONAL PRODUCT PRICES	41.189	45.671	(47.440)	(46.645)	(49.385)
- MOVEMENT IN EXCHANGE RATE	5.784	5.532	5.159	5.200	5.355
AVERAGE UNIT OVER/(UNDER) RECOVERY 26/02/2016 - 26/02/2016	46.973	51.203	(42.281)	(41.445)	(44.030)

R/\$ EXCHANGE RATE - (R/\$ 15.6062 - 26/02/2016)

EXCHANGE RATE USED IN BASIC FUEL PRICE



INTERNATIONAL PRODUCT PRICES OF BASKET USED IN BASIC FUEL PRICE



BASIC FUEL PRICE IN SA CENTS PER LITRE

