

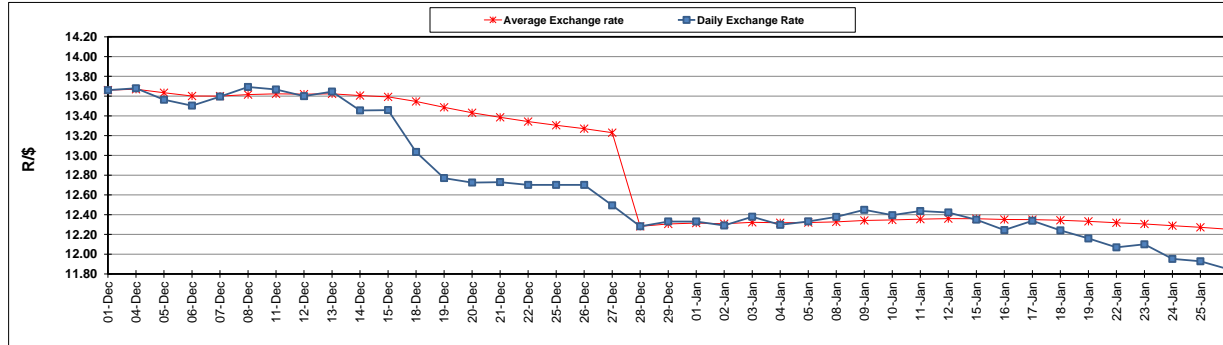
	PETROL 95 ULP	PETROL 93 ULP & LRP	DIESEL 0.05%	DIESEL 0.005%	ILL. PAR.
GAUTENG PUMP PRICE (SA c/l) AS FROM 04/01/2018	1 442.000	1 420.000	-	-	-
WHOLESALE PRICE (SA c/l) AS FROM 04/01/2018	-	-	1 273.630	1 276.030	837.388
SINGLE NATIONAL MAXIMUM RETAIL PRICE	-	-	-	-	1 082.000
BASIC FUEL PRICE - 26/01/2018 (SA c/l)	628.697	619.016	648.222	652.111	651.339
PRESS RELEASE CONTRIBUTION TO BFP 03/01/2018 - 26/01/2018 (SA c/l)	652.170	640.170	662.630	665.030	667.128
UNIT OVER/(UNDER) RECOVERY - 26/01/2018 (SA c/l)	23.473	21.154	14.408	12.919	15.789
AVERAGE BASIC FUEL PRICE 28/12/2017 - 26/01/2018	626.975	617.023	650.189	653.290	652.148
AVERAGE UNIT OVER/(UNDER) RECOVERY 28/12/2017 - 26/01/2018	31.377	28.420	16.441	16.468	20.071

ANALYSIS MOVEMENT OF AVERAGE OVER/(UNDER) RECOVERY

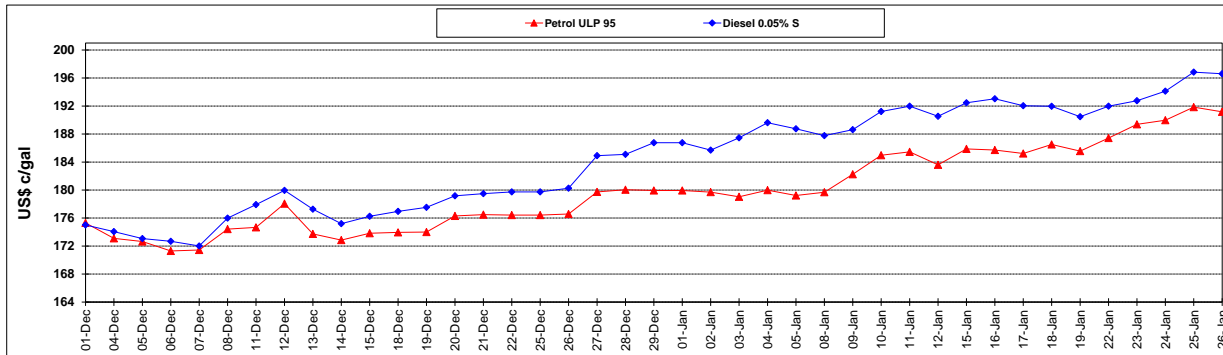
	PETROL 95	PETROL 93	DIESEL 0.05%	DIESEL 0.005%	ILL. PAR.
- MOVEMENT IN INTERNATIONAL PRODUCT PRICES	(18.658)	(20.821)	(35.447)	(35.668)	(31.973)
- MOVEMENT IN EXCHANGE RATE	50.035	49.241	51.888	52.135	52.044
AVERAGE UNIT OVER/(UNDER) RECOVERY 28/12/2017 - 26/01/2018	31.377	28.420	16.441	16.468	20.071

R/\$ EXCHANGE RATE - (R/\$ 11.8475 - 26/01/2018)

EXCHANGE RATE USED IN BASIC FUEL PRICE



INTERNATIONAL PRODUCT PRICES OF BASKET USED IN BASIC FUEL PRICE



BASIC FUEL PRICE IN SA CENTS PER LITRE

