

UPDATE OF THE BASIC FUEL PRICE

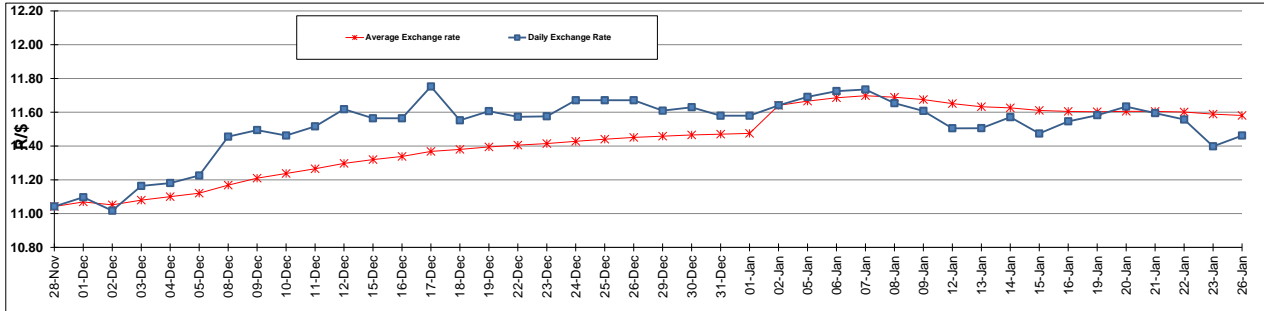
| | PETROL 95 ULP | PETROL 93 ULP & LRP | DIESEL 0.05% | DIESEL 0.005% | ILL. PAR. |
|--|------------------|------------------------|-----------------|------------------|-----------|
| GAUTENG PUMP PRICE (SA c/l) AS FROM 07/01/2015 | 1,124.000 | 1,102.000 | - | - | - |
| WHOLESALE PRICE (SA c/l) AS FROM 07/01/2015 | - | - | 1,028.090 | 1,032.490 | 747.928 |
| SINGLE NATIONAL MAXIMUM RETAIL PRICE | - | - | - | - | 969.000 |
| BASIC FUEL PRICE - 26/01/2015 (SA c/l) | 450.529 | 436.240 | 484.515 | 488.981 | 496.305 |
| PRESS RELEASE CONTRIBUTION TO BFP 07/01/2015 - 26/01/2015 (SA c/l) | 533.250 | 521.250 | 582.630 | 587.030 | 593.128 |
| UNIT OVER/(UNDER) RECOVERY (SA c/l) - 26/01/2015 | 82.721 | 85.010 | 98.115 | 98.049 | 96.823 |
| AVERAGE BASIC FUEL PRICE 02/01/2015 - 26/01/2015 | 459.945 | 446.796 | 498.939 | 503.134 | 507.633 |
| AVERAGE UNIT OVER/(UNDER) RECOVERY 02/01/2015 - 26/01/2015 | 95.011 | 96.866 | 102.044 | 102.425 | 104.553 |

ANALYSIS MOVEMENT OF AVERAGE OVER/(UNDER) RECOVERY

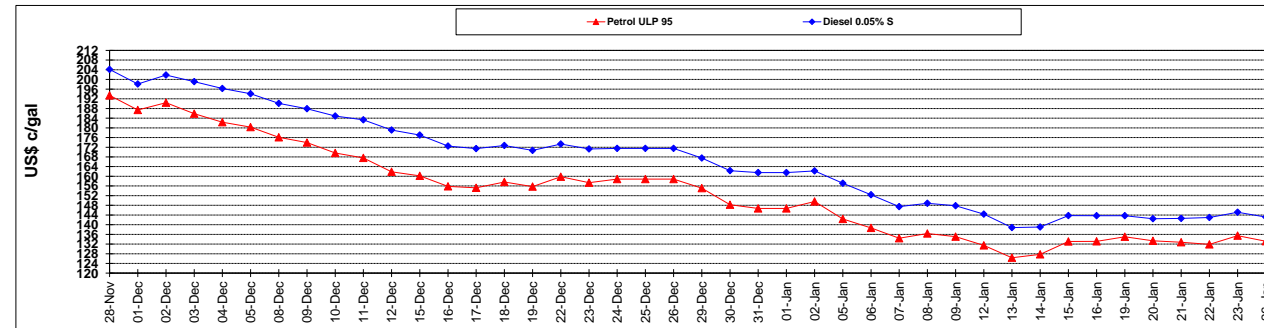
| | PETROL 95 | PETROL 93 | DIESEL 0.05% | DIESEL 0.005% | ILL. PAR. |
|--|-----------|-----------|--------------|---------------|-----------|
| - MOVEMENT IN INTERNATIONAL PRODUCT PRICES | 99.237 | 100.971 | 106.628 | 107.047 | 109.218 |
| - MOVEMENT IN EXCHANGE RATE | (4.226) | (4.105) | (4.584) | (4.622) | (4.664) |
| AVERAGE UNIT OVER/(UNDER) RECOVERY 02/01/2015 - 26/01/2015 | 95.011 | 96.866 | 102.044 | 102.425 | 104.553 |

R/\$ EXCHANGE RATE - (R/\$ 11.4618 - 26/01/2015)

EXCHANGE RATE USED IN BASIC FUEL PRICE



INTERNATIONAL PRODUCT PRICES OF BASKET USED IN BASIC FUEL PRICE



BASIC FUEL PRICE IN SA CENTS PER LITRE

