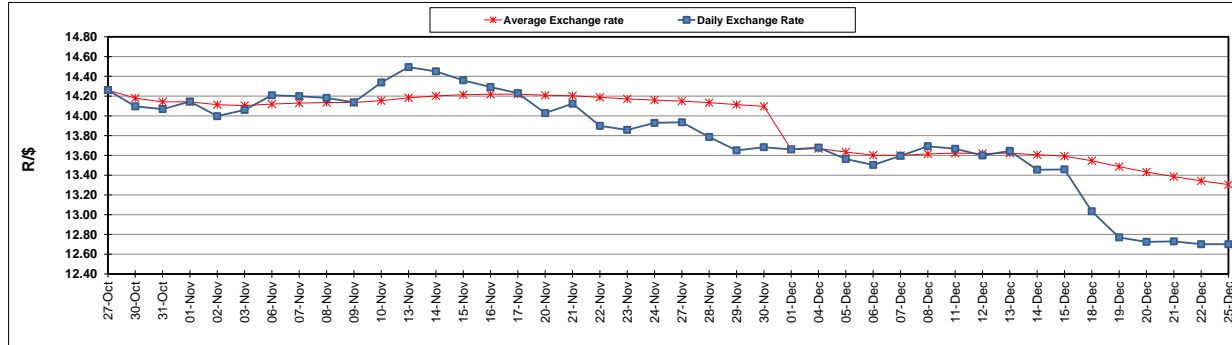


	PETROL 95 ULP	PETROL 93 ULP & LRP	DIESEL 0.05%	DIESEL 0.005%	ILL. PAR.
GAUTENG PUMP PRICE (SA c/l) AS FROM 07/12/2017	1 476.000	1 449.000	-	-	-
WHOLESALE PRICE (SA c/l) AS FROM 07/12/2017	-	-	1 295.630	1 302.030	865.388
SINGLE NATIONAL MAXIMUM RETAIL PRICE	-	-	-	-	1 119.000
BASIC FUEL PRICE - 25/12/2017 (SA c/l)	622.387	611.366	635.951	638.082	637.532
PRESS RELEASE CONTRIBUTION TO BFP 05/12/2017 - 25/12/2017 (SA c/l)	686.170	669.170	684.630	691.030	695.128
UNIT OVER/(UNDER) RECOVERY - 25/12/2017 (SA c/l)	63.783	57.804	48.679	52.948	57.596
AVERAGE BASIC FUEL PRICE 01/12/2017 - 25/12/2017	644.330	632.357	654.501	657.765	656.765
AVERAGE UNIT OVER/(UNDER) RECOVERY 01/12/2017 - 25/12/2017	29.999	24.972	19.364	23.029	25.304

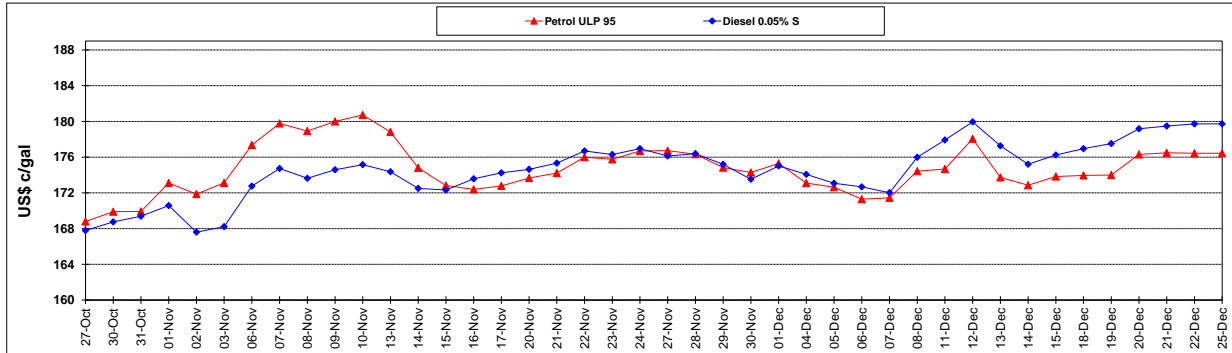
ANALYSIS MOVEMENT OF AVERAGE OVER/(UNDER) RECOVERY					
	PETROL 95	PETROL 93	DIESEL 0.05%	DIESEL 0.005%	ILL. PAR.
- MOVEMENT IN INTERNATIONAL PRODUCT PRICES	(8.342)	(12.657)	(19.582)	(16.110)	(13.777)
- MOVEMENT IN EXCHANGE RATE	38.341	37.629	38.946	39.140	39.081
AVERAGE UNIT OVER/(UNDER) RECOVERY 01/12/2017 - 25/12/2017	29.999	24.972	19.364	23.029	25.304

R/\$ EXCHANGE RATE - (R/\$ 12.7013 - 25/12/2017)

EXCHANGE RATE USED IN BASIC FUEL PRICE



INTERNATIONAL PRODUCT PRICES OF BASKET USED IN BASIC FUEL PRICE



BASIC FUEL PRICE IN SA CENTS PER LITRE

