

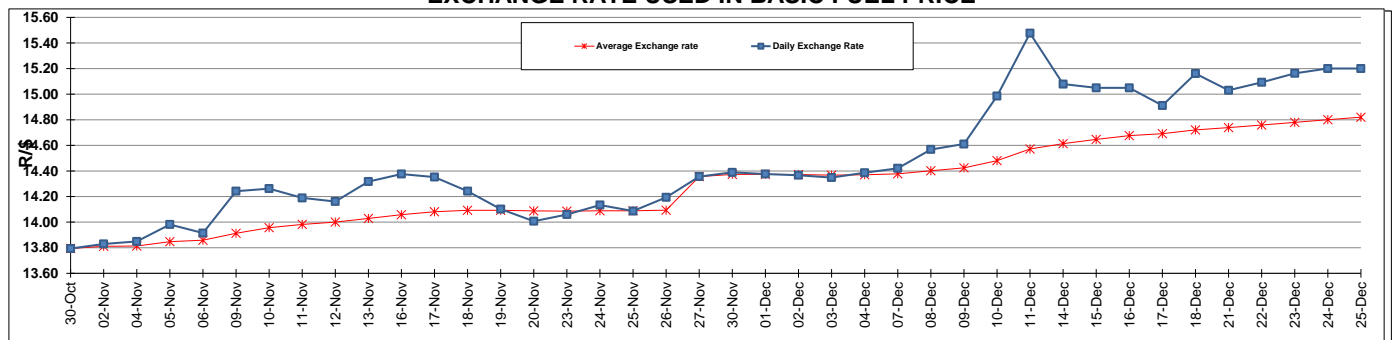
	PETROL 95 ULP	PETROL 93 ULP & LRP	DIESEL 0.05%	DIESEL 0.005%	ILL. PAR.
GAUTENG PUMP PRICE (SA c/l) AS FROM 02/12/2015	1 240.000	1 209.000	-	-	-
WHOLESALE PRICE (SA c/l) AS FROM 02/12/2015	-	-	1 081.170	1 088.570	710.028
SINGLE NATIONAL MAXIMUM RETAIL PRICE	-	-	-	-	912.000
BASIC FUEL PRICE - 25/12/2015 (SA c/l)	557.389	537.603	456.501	462.042	473.310
PRESS RELEASE CONTRIBUTION TO BFP 02/12/2015 - 25/12/2015 (SA c/l)	553.970	532.970	550.630	558.030	550.128
UNIT OVER/(UNDER) RECOVERY (SA c/l) - 25/12/2015	(3.419)	(4.633)	94.129	95.988	76.818
AVERAGE BASIC FUEL PRICE 27/11/2015 - 25/12/2015	551.687	534.363	479.180	484.264	490.091
AVERAGE UNIT OVER/(UNDER) RECOVERY 27/11/2015 - 25/12/2015	3.269	(0.407)	72.307	74.337	60.323

### ANALYSIS MOVEMENT OF AVERAGE OVER/(UNDER) RECOVERY

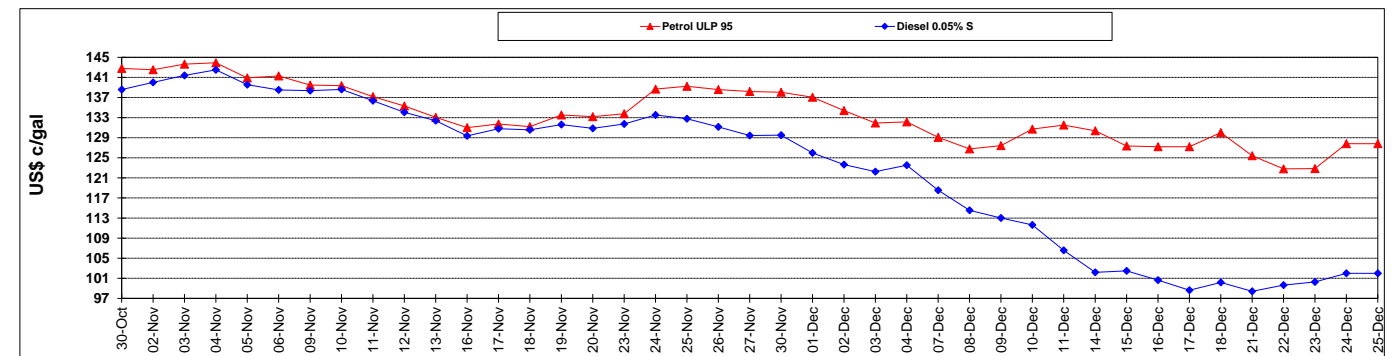
	PETROL 95	PETROL 93	DIESEL 0.05%	DIESEL 0.005%	ILL. PAR.
- MOVEMENT IN INTERNATIONAL PRODUCT PRICES	30.299	25.774	95.784	98.063	84.335
- MOVEMENT IN EXCHANGE RATE	(27.030)	(26.181)	(23.477)	(23.726)	(24.012)
AVERAGE UNIT OVER/(UNDER) RECOVERY 27/11/2015 - 25/12/2015	3.269	(0.407)	72.307	74.337	60.323

### R/\$ EXCHANGE RATE - (R/\$ 15.2002 - 25/12/2015)

#### EXCHANGE RATE USED IN BASIC FUEL PRICE



#### INTERNATIONAL PRODUCT PRICES OF BASKET USED IN BASIC FUEL PRICE



#### BASIC FUEL PRICE IN SA CENTS PER LITRE

