

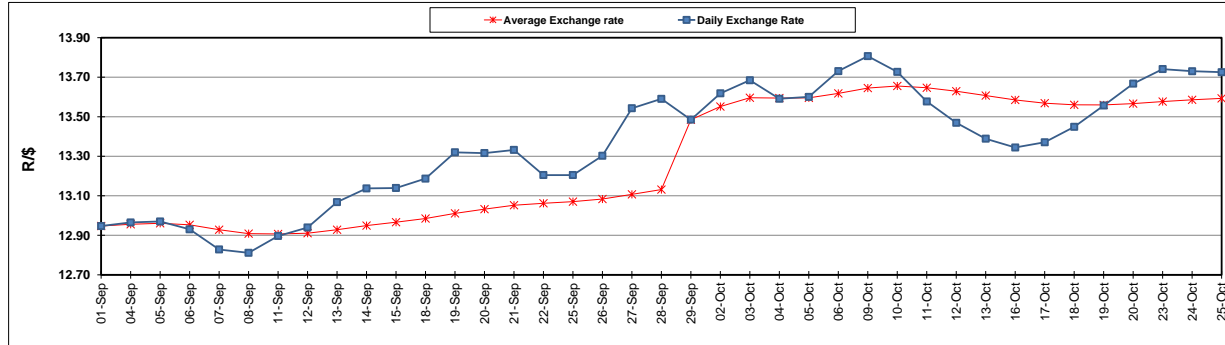
|  | PETROL 95<br>ULP | PETROL 93<br>ULP & LRP | DIESEL<br>0.05% | DIESEL<br>0.005% | ILL. PAR. |
|--|------------------|------------------------|-----------------|------------------|-----------|
| GAUTENG PUMP PRICE (SA c/l) AS FROM 04/10/2017                     | 1 401.000        | 1 374.000              | -               | -                | -         |
| WHOLESALE PRICE (SA c/l) AS FROM 04/10/2017                        | -                | -                      | 1 212.330       | 1 217.730        | 771.088   |
| SINGLE NATIONAL MAXIMUM RETAIL PRICE                               | -                | -                      | -               | -                | 992.000   |
| BASIC FUEL PRICE - 25/10/2017 (SA c/l)                             | 632.067          | 617.607                | 631.550         | 640.465          | 632.236   |
| PRESS RELEASE CONTRIBUTION TO BFP 04/10/2017 - 25/10/2017 (SA c/l) | 615.070          | 598.070                | 600.630         | 606.030          | 600.128   |
| UNIT OVER/(UNDER) RECOVERY (SA c/l) - 25/10/2017                   | (16.997)         | (19.537)               | (30.920)        | (34.435)         | (32.108)  |
| AVERAGE BASIC FUEL PRICE 29/09/2017 - 25/10/2017                   | 613.664          | 597.826                | 615.852         | 625.264          | 612.293   |
| AVERAGE UNIT OVER/(UNDER) RECOVERY 29/09/2017 - 25/10/2017         | (3.172)          | (3.704)                | (21.854)        | (25.866)         | (18.323)  |

### ANALYSIS MOVEMENT OF AVERAGE OVER/(UNDER) RECOVERY

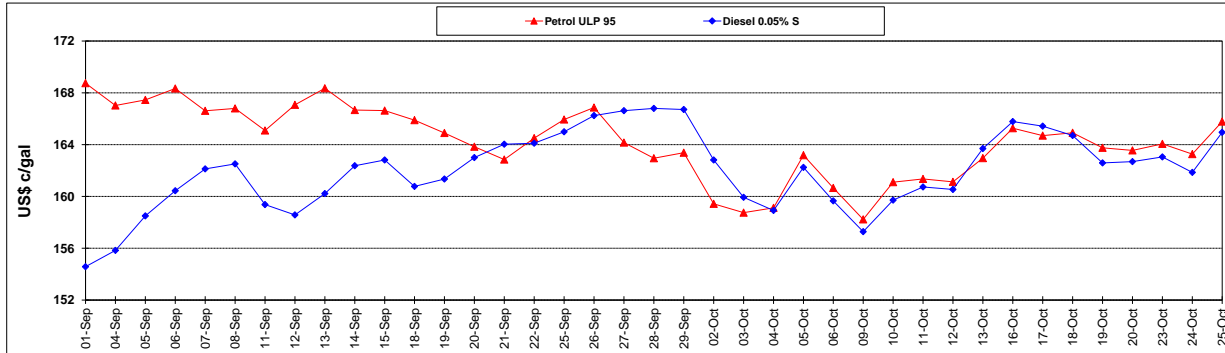
|  | PETROL 95 | PETROL 93 | DIESEL 0.05% | DIESEL 0.005% | ILL. PAR. |
|--|-----------|-----------|--------------|---------------|-----------|
| - MOVEMENT IN INTERNATIONAL PRODUCT PRICES                 | 17.644    | 16.577    | (0.963)      | (4.656)       | 2.447     |
| - MOVEMENT IN EXCHANGE RATE                                | (20.817)  | (20.280)  | (20.891)     | (21.210)      | (20.770)  |
| AVERAGE UNIT OVER/(UNDER) RECOVERY 29/09/2017 - 25/10/2017 | (3.172)   | (3.704)   | (21.854)     | (25.866)      | (18.323)  |

### R/\$ EXCHANGE RATE - (R/\$ 13.7253- 25/10/2017)

#### EXCHANGE RATE USED IN BASIC FUEL PRICE



#### INTERNATIONAL PRODUCT PRICES OF BASKET USED IN BASIC FUEL PRICE



#### BASIC FUEL PRICE IN SA CENTS PER LITRE

