

## UPDATE OF THE BASIC FUEL PRICE

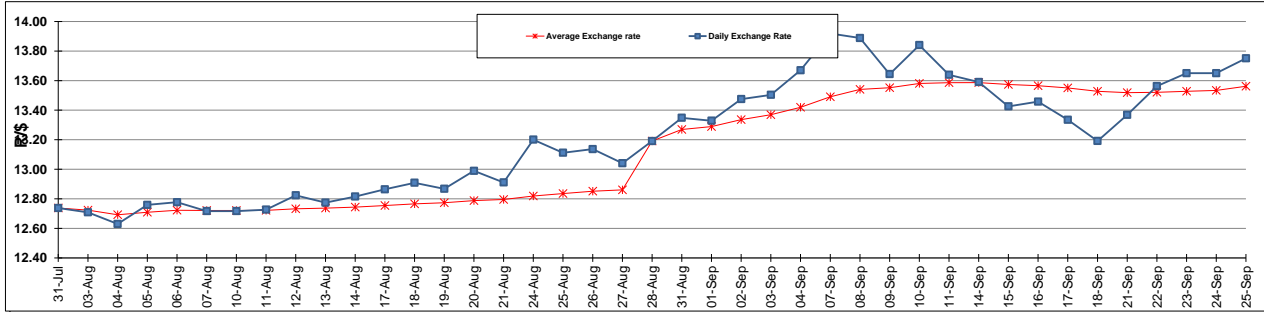
	PETROL 95 ULP	PETROL 93 ULP & LRP	DIESEL 0.05%	DIESEL 0.005%	ILL. PAR.
GAUTENG PUMP PRICE (SA c/l) AS FROM 02/09/2015	1,257.000	1,232.000	-	-	-
WHOLESALE PRICE (SA c/l) AS FROM 02/09/2015	-	-	1,040.970	1,049.370	661.828
SINGLE NATIONAL MAXIMUM RETAIL PRICE	-	-	-	-	847.000
BASIC FUEL PRICE - 25/09/2015 (SA c/l)	593.715	573.723	575.981	581.020	561.867
PRESS RELEASE CONTRIBUTION TO BFP 02/09/2015 - 25/09/2015 (SA c/l)	578.870	563.870	512.630	521.030	504.128
UNIT OVER/(UNDER) RECOVERY (SA c/l) - 25/09/2015	(14.845)	(9.853)	(63.351)	(59.990)	(57.739)
AVERAGE BASIC FUEL PRICE 28/08/2015 - 25/09/2015	592.080	570.602	571.795	578.300	560.307
AVERAGE UNIT OVER/(UNDER) RECOVERY 28/08/2015 - 25/09/2015	(2.696)	3.782	(51.450)	(49.984)	(48.322)

## ANALYSIS MOVEMENT OF AVERAGE OVER/(UNDER) RECOVERY

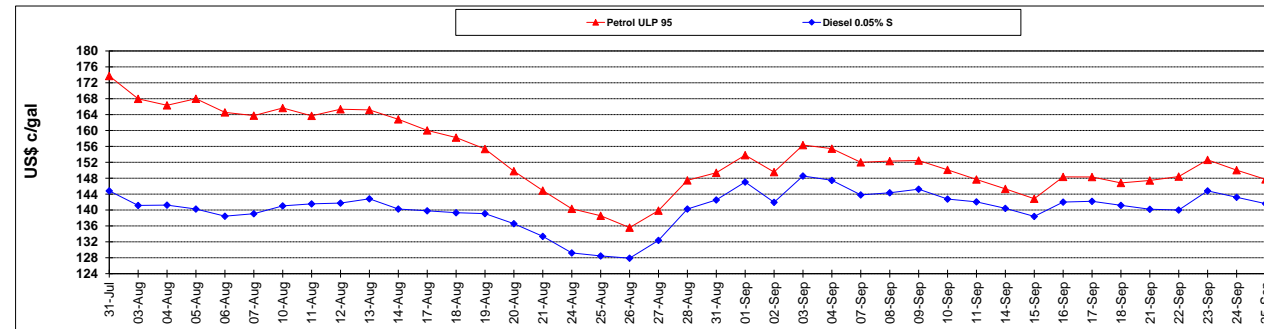
	PETROL 95	PETROL 93	DIESEL 0.05%	DIESEL 0.005%	ILL. PAR.
- MOVEMENT IN INTERNATIONAL PRODUCT PRICES	27.908	33.276	(21.896)	(20.092)	(19.360)
- MOVEMENT IN EXCHANGE RATE	(30.604)	(29.494)	(29.555)	(29.892)	(28.962)
AVERAGE UNIT OVER/(UNDER) RECOVERY 28/08/2015 - 25/09/2015	(2.696)	3.782	(51.450)	(49.984)	(48.322)

**R/\$ EXCHANGE RATE - (R/\$ 13.7507 - 25/09/2015)**

## EXCHANGE RATE USED IN BASIC FUEL PRICE



## INTERNATIONAL PRODUCT PRICES OF BASKET USED IN BASIC FUEL PRICE



## BASIC FUEL PRICE IN SA CENTS PER LITRE

