

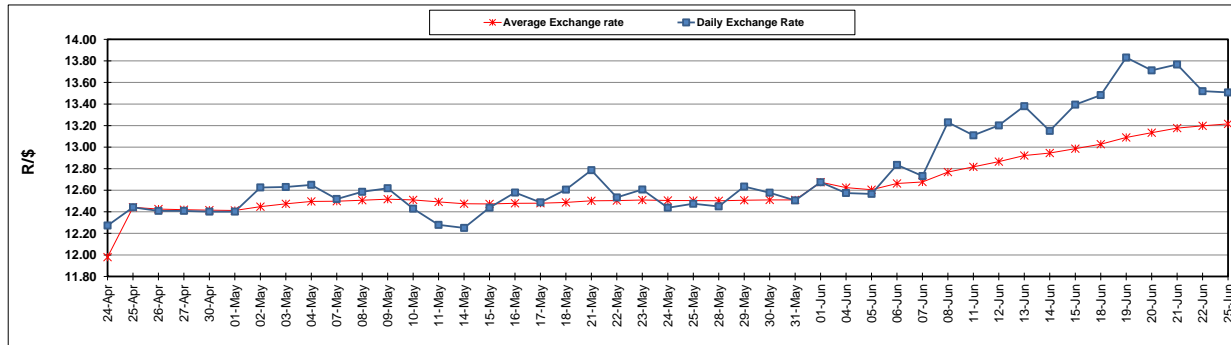
	PETROL 95 ULP	PETROL 93 ULP & LRP	DIESEL 0.05%	DIESEL 0.005%	ILL. PAR.
GAUTENG PUMP PRICE (SA c/l) AS FROM 06/06/2018	1 579.000	1 554.000	-	-	-
WHOLESALE PRICE (SA c/l) AS FROM 06/06/2018	-	-	1 418.830	1 425.230	927.088
SINGLE NATIONAL MAXIMUM RETAIL PRICE	-	-	-	-	1 198.000
BASIC FUEL PRICE - 25/06/2018 (SA c/l)	734.750	725.868	756.008	760.456	762.895
PRESS RELEASE CONTRIBUTION TO BFP 06/06/2018 - 25/06/2018 (SA c/l)	727.070	712.070	745.630	752.030	754.128
UNIT OVER/(UNDER) RECOVERY - 25/06/2018 (SA c/l)	(7.680)	(13.798)	(10.378)	(8.426)	(8.767)
AVERAGE BASIC FUEL PRICE 01/06/2018 - 25/06/2018	734.770	723.141	754.975	759.241	758.803
AVERAGE UNIT OVER/(UNDER) RECOVERY 01/06/2018 - 25/06/2018	(22.171)	(25.542)	(24.345)	(22.564)	(19.146)

ANALYSIS MOVEMENT OF AVERAGE OVER/(UNDER) RECOVERY

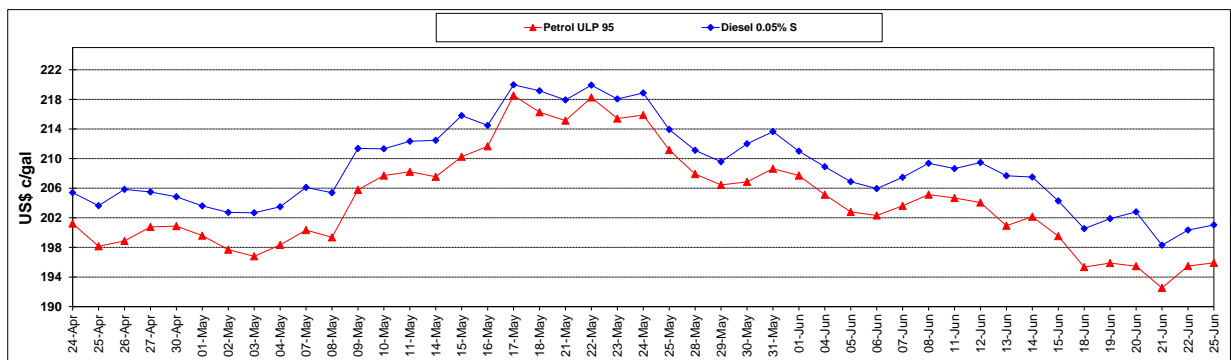
	PETROL 95	PETROL 93	DIESEL 0.05%	DIESEL 0.005%	ILL. PAR.
- MOVEMENT IN INTERNATIONAL PRODUCT PRICES	17.070	13.078	15.975	17.984	21.379
- MOVEMENT IN EXCHANGE RATE	(39.241)	(38.620)	(40.320)	(40.548)	(40.525)
AVERAGE UNIT OVER/(UNDER) RECOVERY 01/06/2018 - 25/06/2018	(22.171)	(25.542)	(24.345)	(22.564)	(19.146)

R/\$ EXCHANGE RATE - (R/\$13.5073 - 25/06/2018)

EXCHANGE RATE USED IN BASIC FUEL PRICE



INTERNATIONAL PRODUCT PRICES OF BASKET USED IN BASIC FUEL PRICE



BASIC FUEL PRICE IN SA CENTS PER LITRE

