

UPDATE OF THE BASIC FUEL PRICE

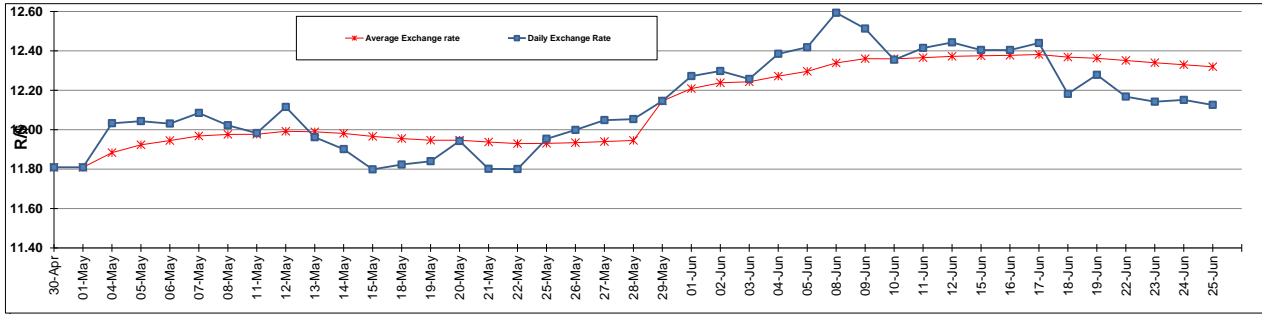
	PETROL 95 ULP	PETROL 93 ULP & LRP	DIESEL 0.05%	DIESEL 0.005%	ILL. PAR.
GAUTENG PUMP PRICE (SA c/l) AS FROM 03/06/2015	1,336.000	1,308.000	-	-	-
WHOLESALE PRICE (SA c/l) AS FROM 03/06/2015	-	-	1,166.790	1,170.190	780.828
SINGLE NATIONAL MAXIMUM RETAIL PRICE	-	-	-	-	1,006.000
BASIC FUEL PRICE - 25/06/2015 (SA c/l)	666.333	650.909	611.941	617.301	602.620
PRESS RELEASE CONTRIBUTION TO BFP 03/06/2015 - 25/06/2015 (SA c/l)	662.650	644.650	638.630	642.030	623.128
UNIT OVER/(UNDER) RECOVERY (SA c/l) - 25/06/2015	(3.683)	(6.259)	26.689	24.729	20.508
AVERAGE BASIC FUEL PRICE 29/05/2015 - 25/06/2015	696.931	681.880	636.238	639.417	622.122
AVERAGE UNIT OVER/(UNDER) RECOVERY 29/05/2015 - 25/06/2015	(41.331)	(44.280)	(4.958)	(4.287)	(5.294)

ANALYSIS MOVEMENT OF AVERAGE OVER/(UNDER) RECOVERY

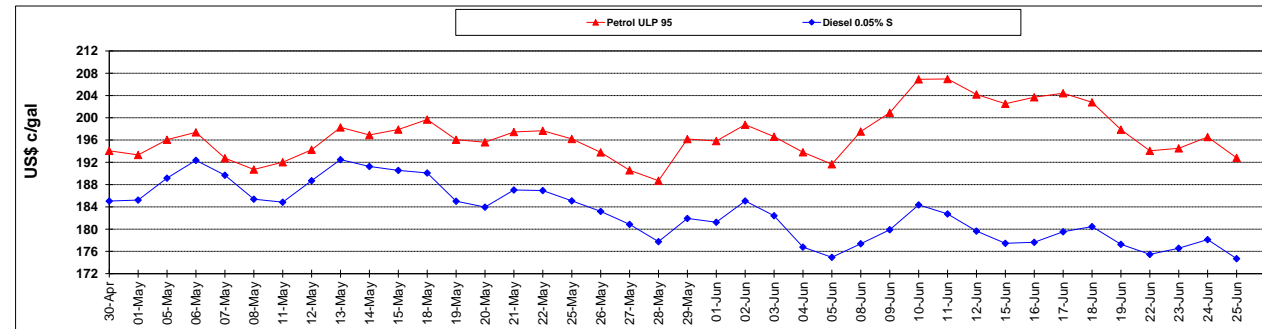
	PETROL 95	PETROL 93	DIESEL 0.05%	DIESEL 0.005%	ILL. PAR.
- MOVEMENT IN INTERNATIONAL PRODUCT PRICES	(20.162)	(23.568)	14.367	15.135	13.603
- MOVEMENT IN EXCHANGE RATE	(21.169)	(20.712)	(19.325)	(19.422)	(18.897)
AVERAGE UNIT OVER/(UNDER) RECOVERY 29/05/2015 - 25/06/2015	(41.331)	(44.280)	(4.958)	(4.287)	(5.294)

R/\$ EXCHANGE RATE - (R/\$ 12.1258 - 25/06/2015)

EXCHANGE RATE USED IN BASIC FUEL PRICE



INTERNATIONAL PRODUCT PRICES OF BASKET USED IN BASIC FUEL PRICE



BASIC FUEL PRICE IN SA CENTS PER LITRE

