

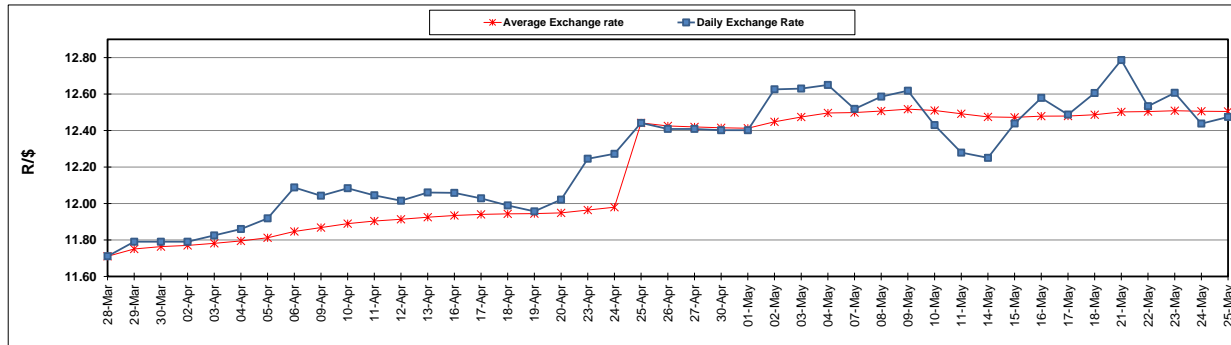
| | PETROL 95 ULP | PETROL 93 ULP & LRP | DIESEL 0.05% | DIESEL 0.005% | ILL. PAR. |
|--|------------------|------------------------|-----------------|------------------|-----------|
| GAUTENG PUMP PRICE (SA c/l) AS FROM 02/05/2018 | 1 497.000 | 1 472.000 | - | - | - |
| WHOLESALE PRICE (SA c/l) AS FROM 02/05/2018 | - | - | 1 333.830 | 1 338.230 | 845.088 |
| SINGLE NATIONAL MAXIMUM RETAIL PRICE | - | - | - | - | 1 089.000 |
| BASIC FUEL PRICE - 25/05/2018 (SA c/l) | 731.019 | 719.768 | 743.045 | 749.558 | 746.908 |
| PRESS RELEASE CONTRIBUTION TO BFP 02/05/2018 - 25/05/2018 (SA c/l) | 645.070 | 630.070 | 660.630 | 665.030 | 672.128 |
| UNIT OVER/(UNDER) RECOVERY - 25/05/2018 (SA c/l) | (85.949) | (89.698) | (82.415) | (84.528) | (74.780) |
| AVERAGE BASIC FUEL PRICE 25/04/2018 - 25/05/2018 | 718.021 | 705.307 | 734.889 | 740.748 | 744.288 |
| AVERAGE UNIT OVER/(UNDER) RECOVERY 25/04/2018 - 25/05/2018 | (83.603) | (85.889) | (87.085) | (88.327) | (83.465) |

ANALYSIS MOVEMENT OF AVERAGE OVER/(UNDER) RECOVERY

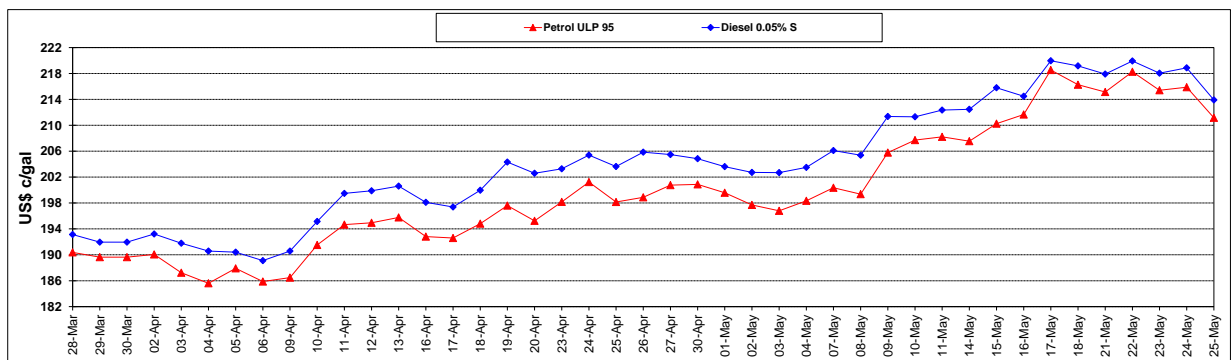
| | PETROL 95 | PETROL 93 | DIESEL 0.05% | DIESEL 0.005% | ILL. PAR. |
|--|-----------|-----------|--------------|---------------|-----------|
| - MOVEMENT IN INTERNATIONAL PRODUCT PRICES | (53.474) | (56.293) | (56.248) | (57.244) | (52.233) |
| - MOVEMENT IN EXCHANGE RATE | (30.129) | (29.596) | (30.837) | (31.083) | (31.231) |
| AVERAGE UNIT OVER/(UNDER) RECOVERY 25/04/2018 - 25/05/2018 | (83.603) | (85.889) | (87.085) | (88.327) | (83.465) |

R/\$ EXCHANGE RATE - (R/\$12.4745 - 25/05/2018)

EXCHANGE RATE USED IN BASIC FUEL PRICE



INTERNATIONAL PRODUCT PRICES OF BASKET USED IN BASIC FUEL PRICE



BASIC FUEL PRICE IN SA CENTS PER LITRE

