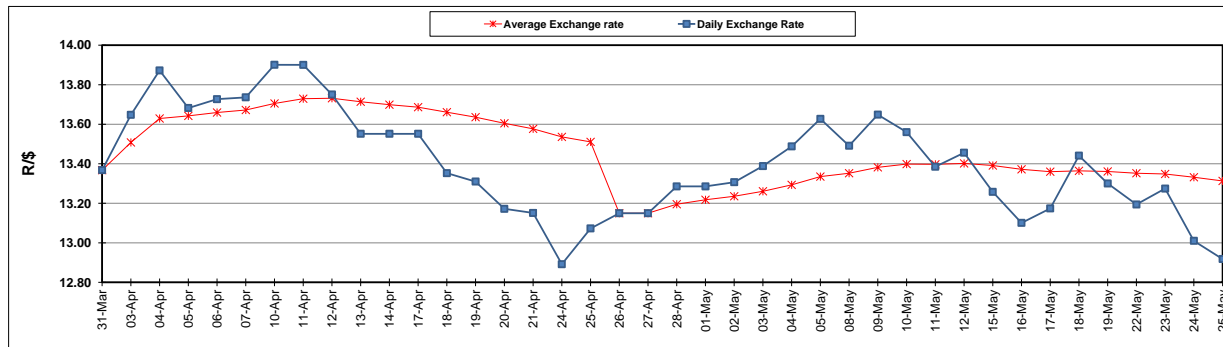


	PETROL 95 ULP	PETROL 93 ULP & LRP	DIESEL 0.05%	DIESEL 0.005%	ILL. PAR.
GAUTENG PUMP PRICE (SA c/l) AS FROM 03/05/2017	1 379.000	1 357.000	-	-	-
WHOLESALE PRICE (SA c/l) AS FROM 03/05/2017	-	-	1 180.330	1 184.730	736.088
SINGLE NATIONAL MAXIMUM RETAIL PRICE	-	-	-	-	947.000
BASIC FUEL PRICE - 25/05/2017 (SA c/l)	565.965	550.656	549.209	553.122	548.758
PRESS RELEASE CONTRIBUTION TO BFP 03/05/2017 - 25/05/2017 (SA c/l)	597.670	585.670	568.630	573.030	565.128
UNIT OVER/(UNDER) RECOVERY (SA c/l) - 25/05/2017	31.705	35.014	19.421	19.908	16.370
AVERAGE BASIC FUEL PRICE 26/04/2017 - 25/05/2017	565.572	549.697	542.955	546.486	538.092
AVERAGE UNIT OVER/(UNDER) RECOVERY 26/04/2017 - 25/05/2017	20.962	24.836	18.857	19.272	19.308

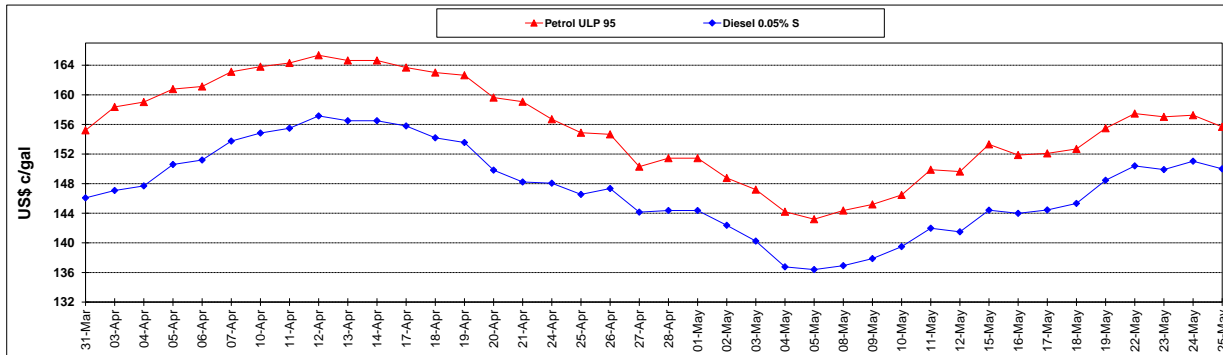
ANALYSIS MOVEMENT OF AVERAGE OVER/(UNDER) RECOVERY					
	PETROL 95	PETROL 93	DIESEL 0.05%	DIESEL 0.005%	ILL. PAR.
- MOVEMENT IN INTERNATIONAL PRODUCT PRICES	12.580	16.691	10.810	11.172	11.335
- MOVEMENT IN EXCHANGE RATE	8.382	8.146	8.047	8.099	7.974
AVERAGE UNIT OVER/(UNDER) RECOVERY 26/04/2017 - 25/05/2017	20.962	24.836	18.857	19.272	19.308

R/\$ EXCHANGE RATE - (R/\$ 12.9178 - 25/05/2017)

EXCHANGE RATE USED IN BASIC FUEL PRICE



INTERNATIONAL PRODUCT PRICES OF BASKET USED IN BASIC FUEL PRICE



BASIC FUEL PRICE IN SA CENTS PER LITRE

