

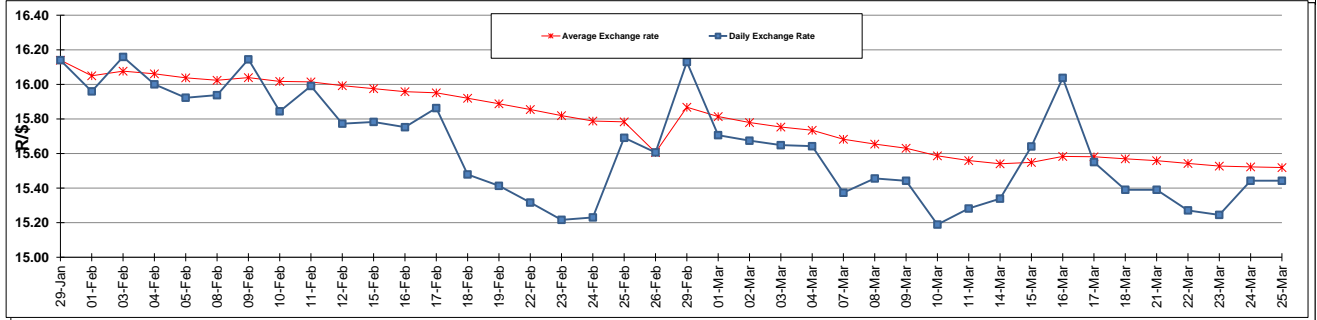
	PETROL 95 ULP	PETROL 93 ULP & LRP	DIESEL 0.05%	DIESEL 0.005%	ILL. PAR.
GAUTENG PUMP PRICE (SA c/l) AS FROM 02/03/2016	1 174.000	1 146.000	-	-	-
WHOLESALE PRICE (SA c/l) AS FROM 02/03/2016	-	-	958.170	961.570	605.028
SINGLE NATIONAL MAXIMUM RETAIL PRICE	-	-	-	-	772.000
BASIC FUEL PRICE - 25/03/2016 (SA c/l)	571.513	555.426	492.825	497.521	506.097
PRESS RELEASE CONTRIBUTION TO BFP 02/03/2016 - 25/03/2016 (SA c/l)	487.970	469.970	427.630	431.030	445.128
UNIT OVER/(UNDER) RECOVERY (SA c/l) - 25/03/2016	(83.543)	(85.456)	(65.195)	(66.491)	(60.969)
AVERAGE BASIC FUEL PRICE 26/02/2016 - 25/03/2016	547.752	526.615	487.980	493.637	499.270
AVERAGE UNIT OVER/(UNDER) RECOVERY 26/02/2016 - 25/03/2016	(49.925)	(46.788)	(62.493)	(64.607)	(56.571)

ANALYSIS MOVEMENT OF AVERAGE OVER/(UNDER) RECOVERY

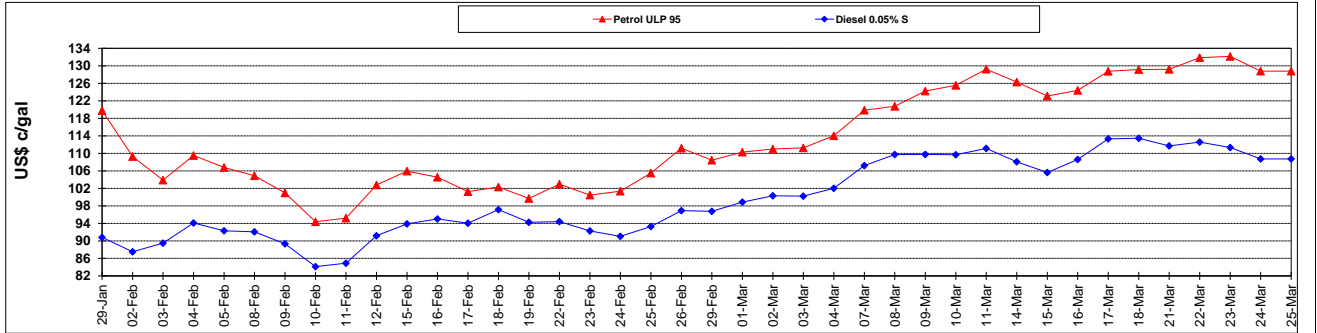
	PETROL 95	PETROL 93	DIESEL 0.05%	DIESEL 0.005%	ILL. PAR.
- MOVEMENT IN INTERNATIONAL PRODUCT PRICES	(59.250)	(55.753)	(70.801)	(73.011)	(65.071)
- MOVEMENT IN EXCHANGE RATE	9.325	8.965	8.308	8.404	8.500
AVERAGE UNIT OVER/(UNDER) RECOVERY 26/02/2016 - 25/03/2016	(49.925)	(46.788)	(62.493)	(64.607)	(56.571)

R/\$ EXCHANGE RATE - (R/\$ 15.4428 - 25/03/2016)

EXCHANGE RATE USED IN BASIC FUEL PRICE



INTERNATIONAL PRODUCT PRICES OF BASKET USED IN BASIC FUEL PRICE



BASIC FUEL PRICE IN SA CENTS PER LITRE

