

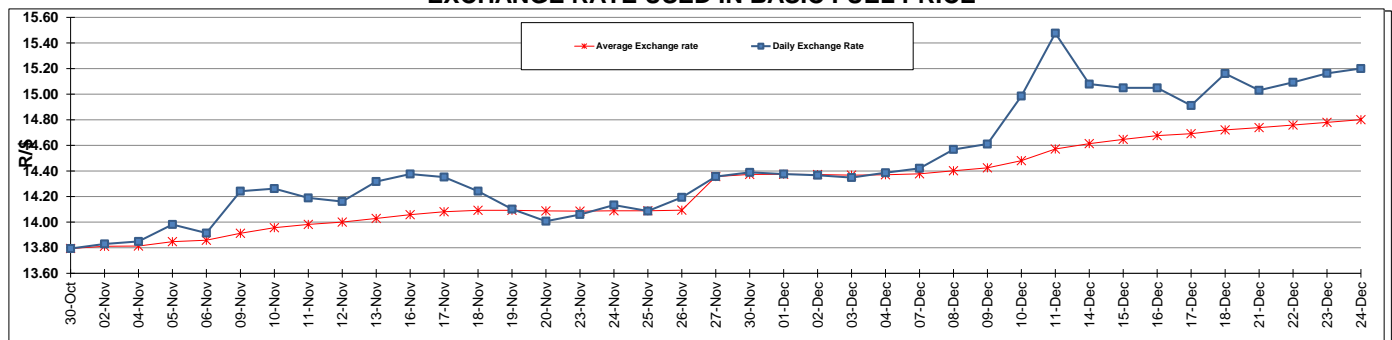
	PETROL 95 ULP	PETROL 93 ULP & LRP	DIESEL 0.05%	DIESEL 0.005%	ILL. PAR.
GAUTENG PUMP PRICE (SA c/l) AS FROM 02/12/2015	1 240.000	1 209.000	-	-	-
WHOLESALE PRICE (SA c/l) AS FROM 02/12/2015	-	-	1 081.170	1 088.570	710.028
SINGLE NATIONAL MAXIMUM RETAIL PRICE	-	-	-	-	912.000
BASIC FUEL PRICE - 24/12/2015 (SA c/l)	557.389	537.603	456.501	462.042	473.310
PRESS RELEASE CONTRIBUTION TO BFP 02/12/2015 - 24/12/2015 (SA c/l)	553.970	532.970	550.630	558.030	550.128
UNIT OVER/(UNDER) RECOVERY (SA c/l) - 24/12/2015	(3.419)	(4.633)	94.129	95.988	76.818
AVERAGE BASIC FUEL PRICE 27/11/2015 - 24/12/2015	551.402	534.201	480.314	485.375	490.930
AVERAGE UNIT OVER/(UNDER) RECOVERY 27/11/2015 - 24/12/2015	3.604	(0.196)	71.216	73.255	59.498

ANALYSIS MOVEMENT OF AVERAGE OVER/(UNDER) RECOVERY

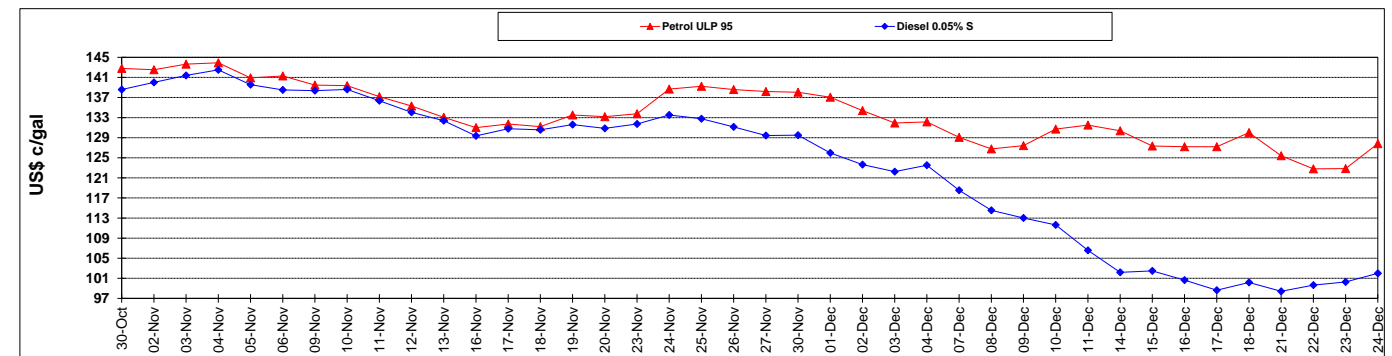
	PETROL 95	PETROL 93	DIESEL 0.05%	DIESEL 0.005%	ILL. PAR.
- MOVEMENT IN INTERNATIONAL PRODUCT PRICES	29.946	25.325	94.163	96.443	82.952
- MOVEMENT IN EXCHANGE RATE	(26.343)	(25.521)	(22.947)	(23.188)	(23.454)
AVERAGE UNIT OVER/(UNDER) RECOVERY 27/11/2015 - 24/12/2015	3.604	(0.196)	71.216	73.255	59.498

R/\$ EXCHANGE RATE - (R/\$ 15.2002 - 24/12/2015)

EXCHANGE RATE USED IN BASIC FUEL PRICE



INTERNATIONAL PRODUCT PRICES OF BASKET USED IN BASIC FUEL PRICE



BASIC FUEL PRICE IN SA CENTS PER LITRE

