

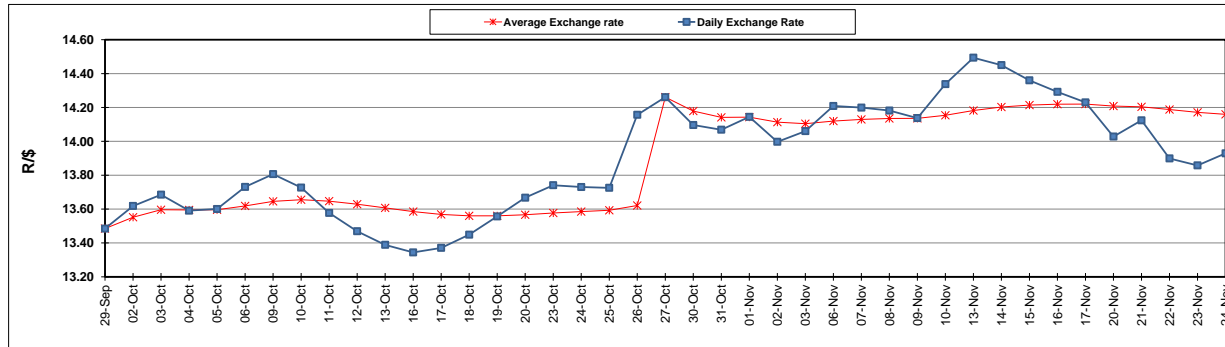
	PETROL 95 ULP	PETROL 93 ULP & LRP	DIESEL 0.05%	DIESEL 0.005%	ILL. PAR.
GAUTENG PUMP PRICE (SA c/l) AS FROM 01/11/2017	1 405.000	1 378.000	-	-	-
WHOLESALE PRICE (SA c/l) AS FROM 01/11/2017	-	-	1 235.330	1 244.730	792.088
SINGLE NATIONAL MAXIMUM RETAIL PRICE	-	-	-	-	1 021.000
BASIC FUEL PRICE - 24/11/2017 (SA c/l)	685.102	671.130	688.918	693.054	698.841
PRESS RELEASE CONTRIBUTION TO BFP 01/11/2017 - 24/11/2017 (SA c/l)	619.070	602.070	623.630	633.030	621.128
UNIT OVER/(UNDER) RECOVERY - 24/11/2017 (SA c/l)	(66.032)	(69.060)	(65.288)	(60.024)	(77.713)
AVERAGE BASIC FUEL PRICE 27/10/2017 - 24/11/2017	688.830	673.241	684.251	690.229	693.887
AVERAGE UNIT OVER/(UNDER) RECOVERY 27/10/2017 - 24/11/2017	(70.331)	(71.742)	(63.906)	(61.056)	(75.759)

ANALYSIS MOVEMENT OF AVERAGE OVER/(UNDER) RECOVERY

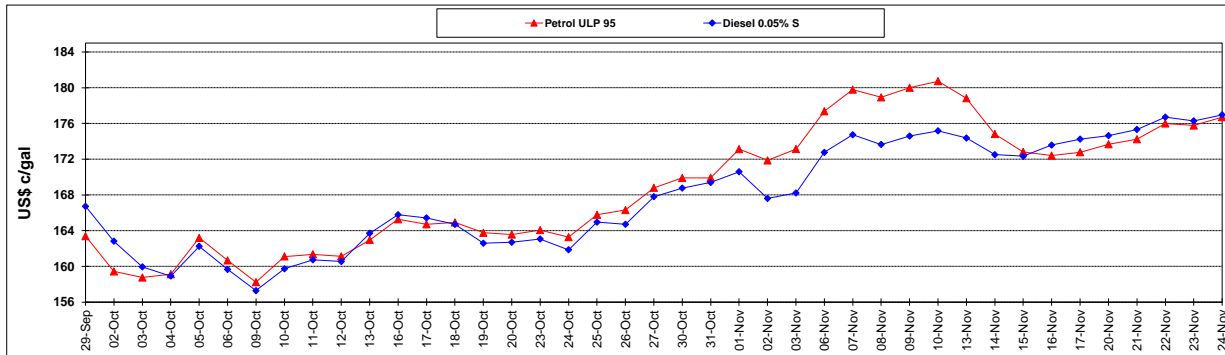
	PETROL 95	PETROL 93	DIESEL 0.05%	DIESEL 0.005%	ILL. PAR.
- MOVEMENT IN INTERNATIONAL PRODUCT PRICES	(44.125)	(46.129)	(37.875)	(34.797)	(49.360)
- MOVEMENT IN EXCHANGE RATE	(26.206)	(25.613)	(26.032)	(26.259)	(26.399)
AVERAGE UNIT OVER/(UNDER) RECOVERY 27/10/2017 - 24/11/2017	(70.331)	(71.742)	(63.906)	(61.056)	(75.759)

R/\$ EXCHANGE RATE - (R/\$ 13.9290 - 24/11/2017)

EXCHANGE RATE USED IN BASIC FUEL PRICE



INTERNATIONAL PRODUCT PRICES OF BASKET USED IN BASIC FUEL PRICE



BASIC FUEL PRICE IN SA CENTS PER LITRE

