

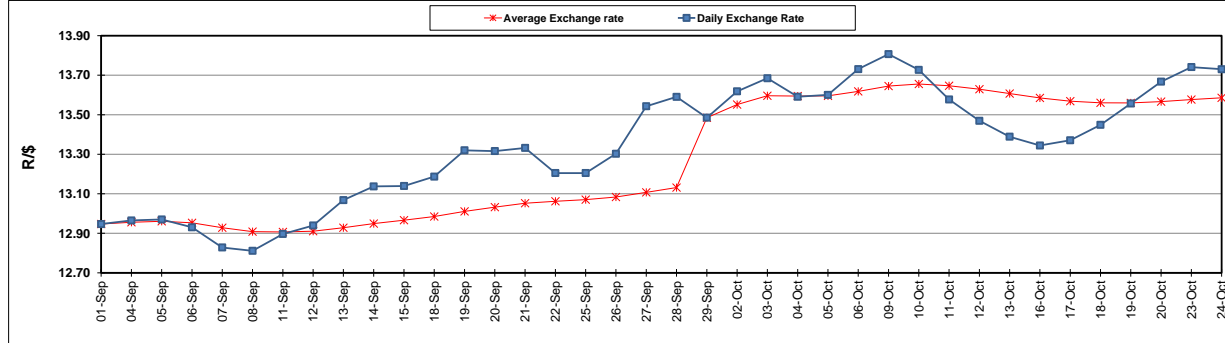
	PETROL 95 ULP	PETROL 93 ULP & LRP	DIESEL 0.05%	DIESEL 0.005%	ILL. PAR.
GAUTENG PUMP PRICE (SA c/l) AS FROM 04/10/2017	1 401.000	1 374.000	-	-	-
WHOLESALE PRICE (SA c/l) AS FROM 04/10/2017	-	-	1 212.330	1 217.730	771.088
SINGLE NATIONAL MAXIMUM RETAIL PRICE	-	-	-	-	992.000
BASIC FUEL PRICE - 24/10/2017 (SA c/l)	623.140	608.674	620.474	629.253	622.157
PRESS RELEASE CONTRIBUTION TO BFP 04/10/2017 - 24/10/2017 (SA c/l)	615.070	598.070	600.630	606.030	600.128
UNIT OVER/(UNDER) RECOVERY (SA c/l) - 24/10/2017	(8.070)	(10.604)	(19.844)	(23.223)	(22.029)
AVERAGE BASIC FUEL PRICE 29/09/2017 - 24/10/2017	612.641	596.727	614.980	624.420	611.185
AVERAGE UNIT OVER/(UNDER) RECOVERY 29/09/2017 - 24/10/2017	(2.404)	(2.824)	(21.350)	(25.390)	(17.557)

ANALYSIS MOVEMENT OF AVERAGE OVER/(UNDER) RECOVERY

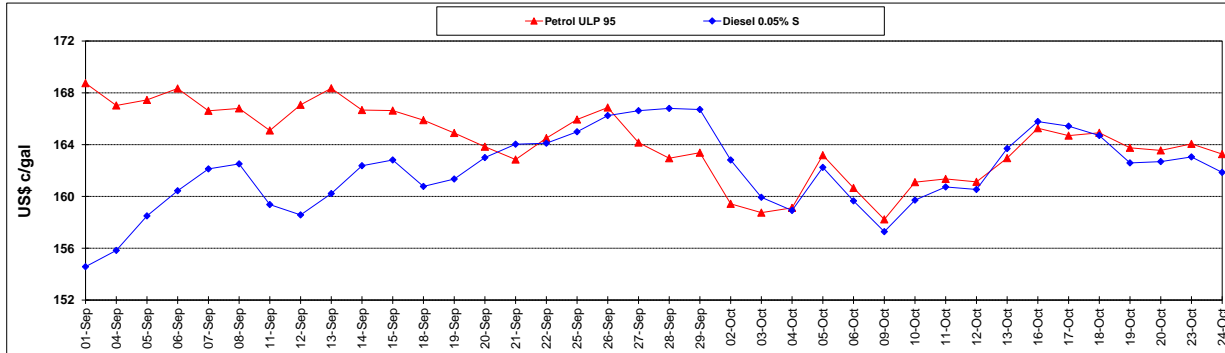
	PETROL 95	PETROL 93	DIESEL 0.05%	DIESEL 0.005%	ILL. PAR.
- MOVEMENT IN INTERNATIONAL PRODUCT PRICES	18.060	17.109	(0.808)	(4.532)	2.859
- MOVEMENT IN EXCHANGE RATE	(20.464)	(19.933)	(20.542)	(20.858)	(20.416)
AVERAGE UNIT OVER/(UNDER) RECOVERY 29/09/2017 - 24/10/2017	(2.404)	(2.824)	(21.350)	(25.390)	(17.557)

R/\$ EXCHANGE RATE - (R/\$ 13.7303- 24/10/2017)

EXCHANGE RATE USED IN BASIC FUEL PRICE



INTERNATIONAL PRODUCT PRICES OF BASKET USED IN BASIC FUEL PRICE



BASIC FUEL PRICE IN SA CENTS PER LITRE

