

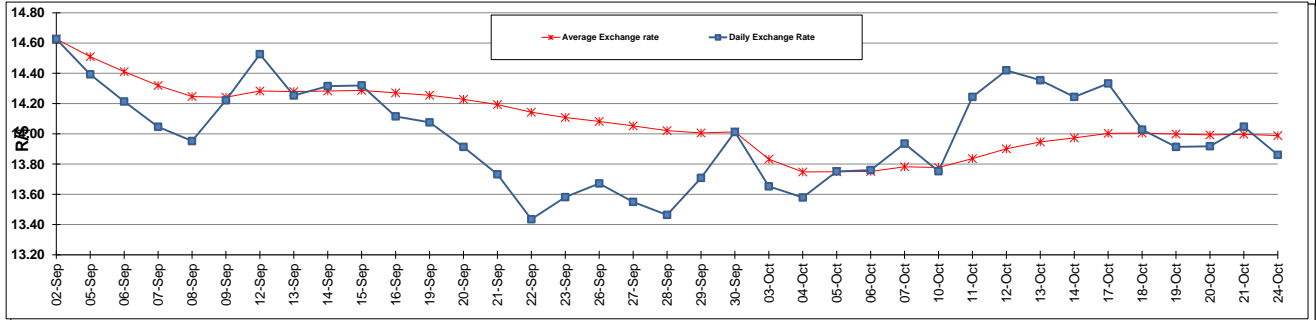
	PETROL 95 ULP	PETROL 93 ULP & LRP	DIESEL 0.05%	DIESEL 0.005%	ILL. PAR.
GAUTENG PUMP PRICE (SA c/l) AS FROM 05/10/2016	1 260.000	1 234.000	-	-	-
WHOLESALE PRICE (SA c/l) AS FROM 05/10/2016	-	-	1 071.870	1 075.270	669.628
SINGLE NATIONAL MAXIMUM RETAIL PRICE	-	-	-	-	858.000
BASIC FUEL PRICE - 24/10/2016 (SA c/l)	580.705	560.720	567.691	571.500	559.785
PRESS RELEASE CONTRIBUTION TO BFP 05/10/2016 - 24/10/2016 (SA c/l)	538.970	522.970	505.630	509.030	508.128
UNIT OVER/(UNDER) RECOVERY (SA c/l) - 24/10/2016	(41.735)	(37.750)	(62.061)	(62.470)	(51.657)
AVERAGE BASIC FUEL PRICE 30/09/2016 - 24/10/2016	578.298	561.818	566.535	569.860	562.451
AVERAGE UNIT OVER/(UNDER) RECOVERY 30/09/2016 - 24/10/2016	(46.916)	(46.612)	(64.964)	(64.889)	(58.205)

### ANALYSIS MOVEMENT OF AVERAGE OVER/(UNDER) RECOVERY

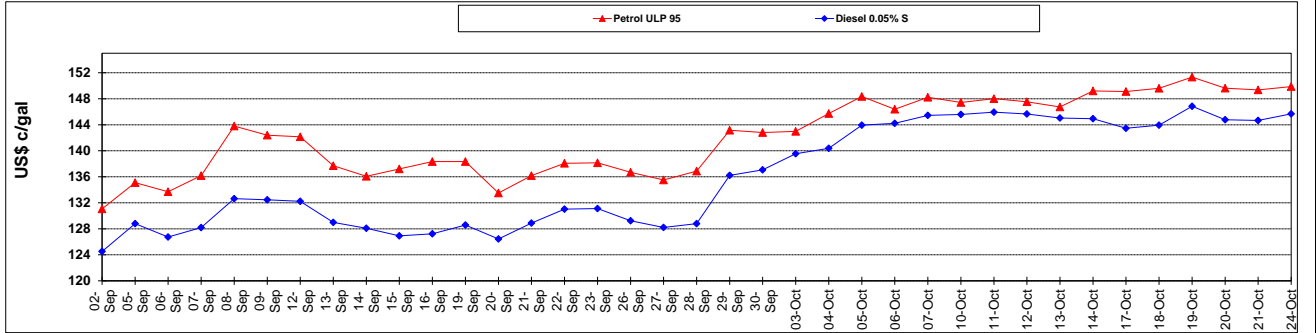
	PETROL 95	PETROL 93	DIESEL 0.05%	DIESEL 0.005%	ILL. PAR.
- MOVEMENT IN INTERNATIONAL PRODUCT PRICES	(47.631)	(47.308)	(65.665)	(65.594)	(58.901)
- MOVEMENT IN EXCHANGE RATE	0.715	0.695	0.701	0.705	0.696
AVERAGE UNIT OVER/(UNDER) RECOVERY 30/09/2016 - 24/10/2016	(46.916)	(46.612)	(64.964)	(64.889)	(58.205)

**R/\$ EXCHANGE RATE - (R/\$13.8608- 24/10/2016)**

### EXCHANGE RATE USED IN BASIC FUEL PRICE



### INTERNATIONAL PRODUCT PRICES OF BASKET USED IN BASIC FUEL PRICE



### BASIC FUEL PRICE IN SA CENTS PER LITRE

