

## UPDATE OF THE BASIC FUEL PRICE

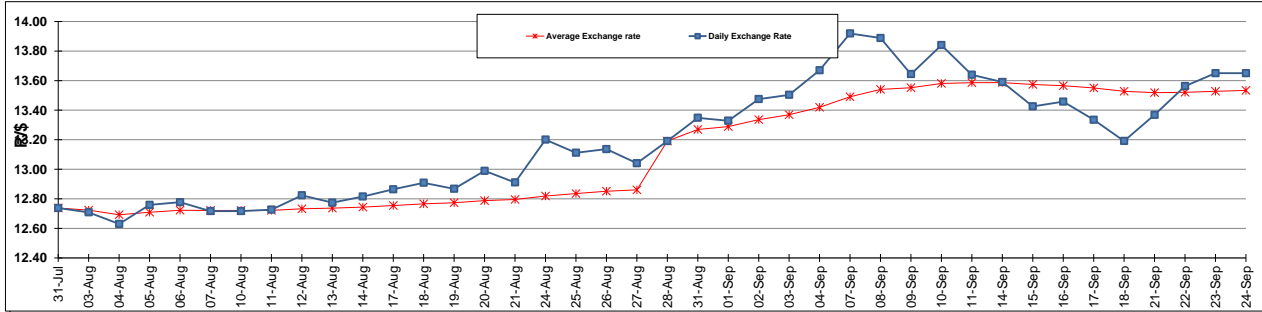
	PETROL 95 ULP	PETROL 93 ULP & LRP	DIESEL 0.05%	DIESEL 0.005%	ILL. PAR.
GAUTENG PUMP PRICE (SA c/l) AS FROM 02/09/2015	1,257.000	1,232.000	-	-	-
WHOLESALE PRICE (SA c/l) AS FROM 02/09/2015	-	-	1,040.970	1,049.370	661.828
SINGLE NATIONAL MAXIMUM RETAIL PRICE	-	-	-	-	847.000
BASIC FUEL PRICE - 24/09/2015 (SA c/l)	597.794	577.948	577.582	582.778	562.759
PRESS RELEASE CONTRIBUTION TO BFP 02/09/2015 - 24/09/2015 (SA c/l)	578.870	563.870	512.630	521.030	504.128
UNIT OVER/(UNDER) RECOVERY (SA c/l) - 24/09/2015	(18.924)	(14.078)	(64.952)	(61.748)	(58.631)
AVERAGE BASIC FUEL PRICE 28/08/2015 - 24/09/2015	591.998	570.446	571.585	578.164	560.229
AVERAGE UNIT OVER/(UNDER) RECOVERY 28/08/2015 - 24/09/2015	(2.088)	4.464	(50.855)	(49.484)	(47.851)

### ANALYSIS MOVEMENT OF AVERAGE OVER/(UNDER) RECOVERY

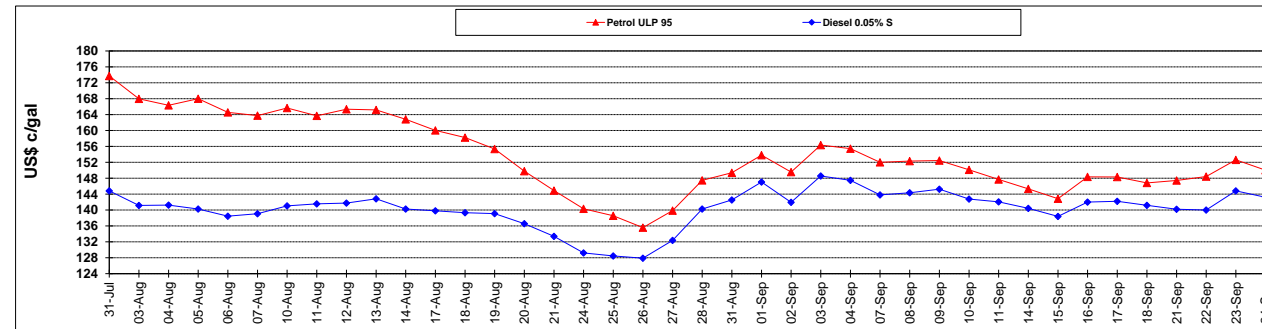
	PETROL 95	PETROL 93	DIESEL 0.05%	DIESEL 0.005%	ILL. PAR.
- MOVEMENT IN INTERNATIONAL PRODUCT PRICES	27.350	32.831	(22.432)	(20.734)	(19.993)
- MOVEMENT IN EXCHANGE RATE	(29.438)	(28.367)	(28.423)	(28.750)	(27.858)
AVERAGE UNIT OVER/(UNDER) RECOVERY 28/08/2015 - 24/09/2015	(2.088)	4.464	(50.855)	(49.484)	(47.851)

**R/\$ EXCHANGE RATE - (R/\$ 13.6501 - 24/09/2015)**

### EXCHANGE RATE USED IN BASIC FUEL PRICE



### INTERNATIONAL PRODUCT PRICES OF BASKET USED IN BASIC FUEL PRICE



### BASIC FUEL PRICE IN SA CENTS PER LITRE

