

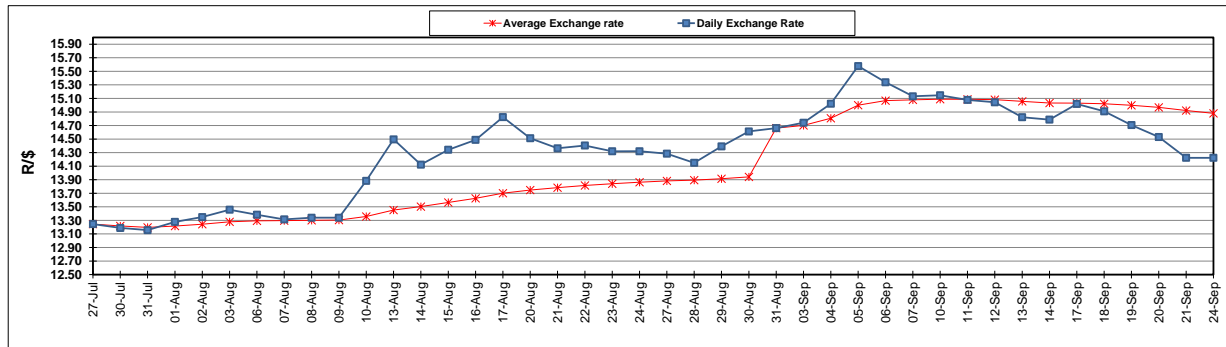
	PETROL 95 ULP	PETROL 93 ULP & LRP	DIESEL 0.05%	DIESEL 0.005%	ILL. PAR.
GAUTENG PUMP PRICE (SA c/l) AS FROM 05/09/2018	1 608.000	1 586.000	-	-	-
WHOLESALE PRICE (SA c/l) AS FROM 05/09/2018	-	-	1 440.830	1 445.230	953.088
SINGLE NATIONAL MAXIMUM RETAIL PRICE	-	-	-	-	1 233.000
BASIC FUEL PRICE - 24/09/2018 (SA c/l)	830.261	817.964	869.100	873.582	859.882
PRESS RELEASE CONTRIBUTION TO BFP 05/09/2018 - 24/09/2018 (SA c/l)	751.170	739.170	767.630	772.030	780.128
UNIT OVER/(UNDER) RECOVERY - 24/09/2018 (SA c/l)	(79.091)	(78.794)	(101.470)	(101.552)	(79.754)
AVERAGE BASIC FUEL PRICE 31/08/2018 - 24/09/2018	852.557	839.822	891.957	896.688	885.315
AVERAGE UNIT OVER/(UNDER) RECOVERY 31/08/2018 - 24/09/2018	(101.405)	(100.670)	(124.327)	(124.658)	(105.187)

ANALYSIS MOVEMENT OF AVERAGE OVER/(UNDER) RECOVERY

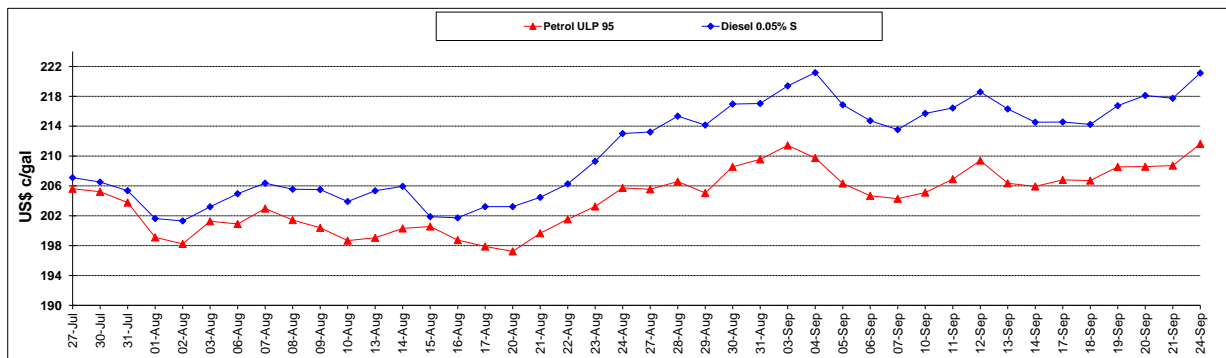
	PETROL 95	PETROL 93	DIESEL 0.05%	DIESEL 0.005%	ILL. PAR.
- MOVEMENT IN INTERNATIONAL PRODUCT PRICES	(47.703)	(47.770)	(68.143)	(68.176)	(49.422)
- MOVEMENT IN EXCHANGE RATE	(53.702)	(52.900)	(56.184)	(56.482)	(55.765)
AVERAGE UNIT OVER/(UNDER) RECOVERY 31/08/2018 - 24/09/2018	(101.405)	(100.670)	(124.327)	(124.658)	(105.187)

R/\$ EXCHANGE RATE - (R/\$14.2235 - 24/09/2018)

EXCHANGE RATE USED IN BASIC FUEL PRICE



INTERNATIONAL PRODUCT PRICES OF BASKET USED IN BASIC FUEL PRICE



BASIC FUEL PRICE IN SA CENTS PER LITRE

