

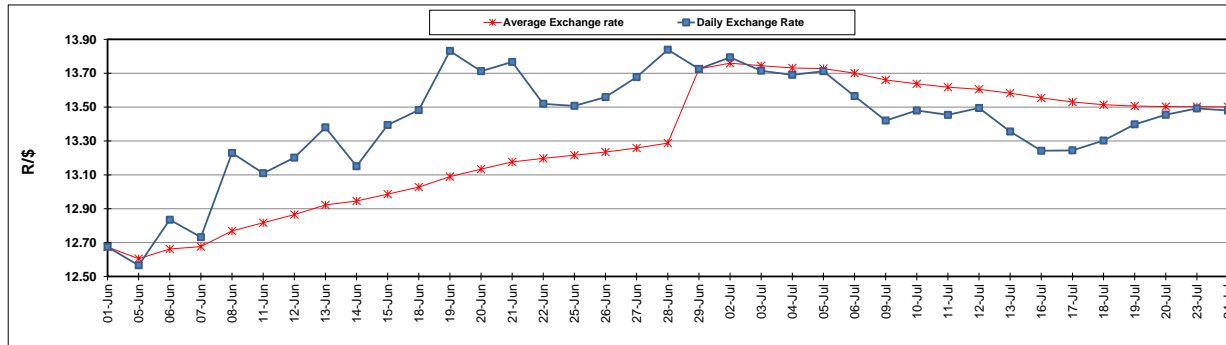
	PETROL 95 ULP	PETROL 93 ULP & LRP	DIESEL 0.05%	DIESEL 0.005%	ILL. PAR.
GAUTENG PUMP PRICE (SA c/l) AS FROM 04/07/2018	1 602.000	1 581.000	-	-	-
WHOLESALE PRICE (SA c/l) AS FROM 04/07/2018	-	-	1 444.830	1 449.230	949.088
SINGLE NATIONAL MAXIMUM RETAIL PRICE	-	-	-	-	1 228.000
BASIC FUEL PRICE - 24/07/2018 (SA c/l)	752.412	739.519	761.725	767.144	771.855
PRESS RELEASE CONTRIBUTION TO BFP 04/07/2018 - 24/07/2018 (SA c/l)	750.070	738.070	771.630	776.030	776.128
UNIT OVER/(UNDER) RECOVERY - 24/07/2018 (SA c/l)	(2.342)	(1.449)	9.905	8.886	4.273
AVERAGE BASIC FUEL PRICE 29/06/2018 - 24/07/2018	747.652	736.686	763.717	768.932	777.322
AVERAGE UNIT OVER/(UNDER) RECOVERY 29/06/2018 - 24/07/2018	(1.415)	(2.950)	3.580	3.098	(4.861)

ANALYSIS MOVEMENT OF AVERAGE OVER/(UNDER) RECOVERY

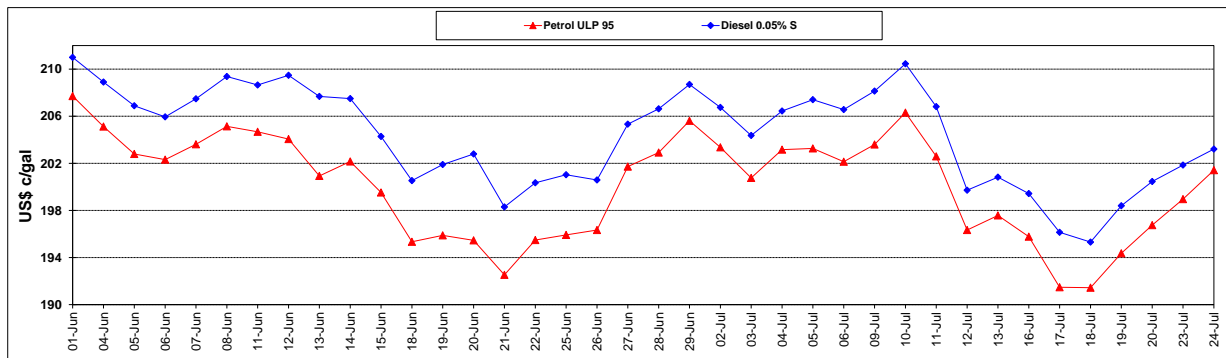
	PETROL 95	PETROL 93	DIESEL 0.05%	DIESEL 0.005%	ILL. PAR.
- MOVEMENT IN INTERNATIONAL PRODUCT PRICES	10.436	8.728	15.685	15.286	7.460
- MOVEMENT IN EXCHANGE RATE	(11.851)	(11.677)	(12.105)	(12.188)	(12.321)
AVERAGE UNIT OVER/(UNDER) RECOVERY 29/06/2018 - 24/07/2018	(1.415)	(2.950)	3.580	3.098	(4.861)

R/\$ EXCHANGE RATE - (R/\$13.4800 - 24/07/2018)

EXCHANGE RATE USED IN BASIC FUEL PRICE



INTERNATIONAL PRODUCT PRICES OF BASKET USED IN BASIC FUEL PRICE



BASIC FUEL PRICE IN SA CENTS PER LITRE

