

UPDATE OF THE BASIC FUEL PRICE

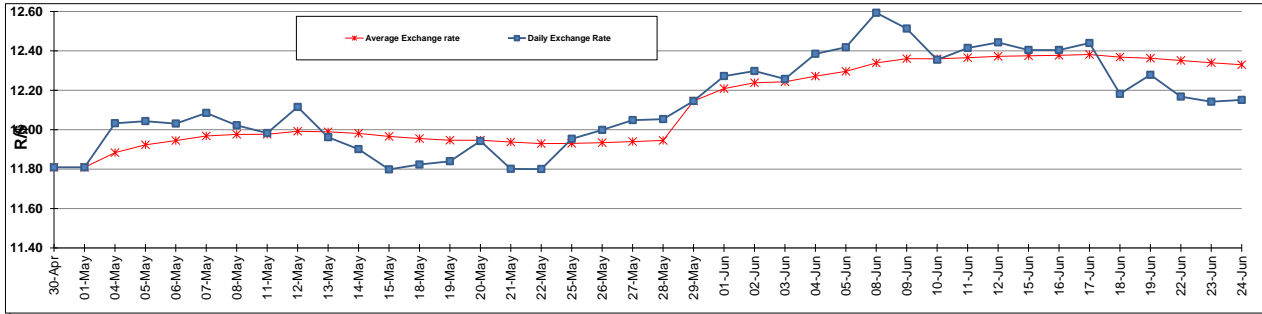
	PETROL 95 ULP	PETROL 93 ULP & LRP	DIESEL 0.05%	DIESEL 0.005%	ILL. PAR.
GAUTENG PUMP PRICE (SA c/l) AS FROM 03/06/2015	1,336.000	1,308.000	-	-	-
WHOLESALE PRICE (SA c/l) AS FROM 03/06/2015	-	-	1,166.790	1,170.190	780.828
SINGLE NATIONAL MAXIMUM RETAIL PRICE	-	-	-	-	1,006.000
BASIC FUEL PRICE - 24/06/2015 (SA c/l)	679.772	664.316	624.200	629.879	616.368
PRESS RELEASE CONTRIBUTION TO BFP 03/06/2015 - 24/06/2015 (SA c/l)	662.650	644.650	638.630	642.030	623.128
UNIT OVER/(UNDER) RECOVERY (SA c/l) - 24/06/2015	(17.122)	(19.666)	14.430	12.151	6.760
AVERAGE BASIC FUEL PRICE 29/05/2015 - 24/06/2015	698.541	683.510	637.516	640.581	623.148
AVERAGE UNIT OVER/(UNDER) RECOVERY 29/05/2015 - 24/06/2015	(43.312)	(46.281)	(6.623)	(5.814)	(6.652)

ANALYSIS MOVEMENT OF AVERAGE OVER/(UNDER) RECOVERY

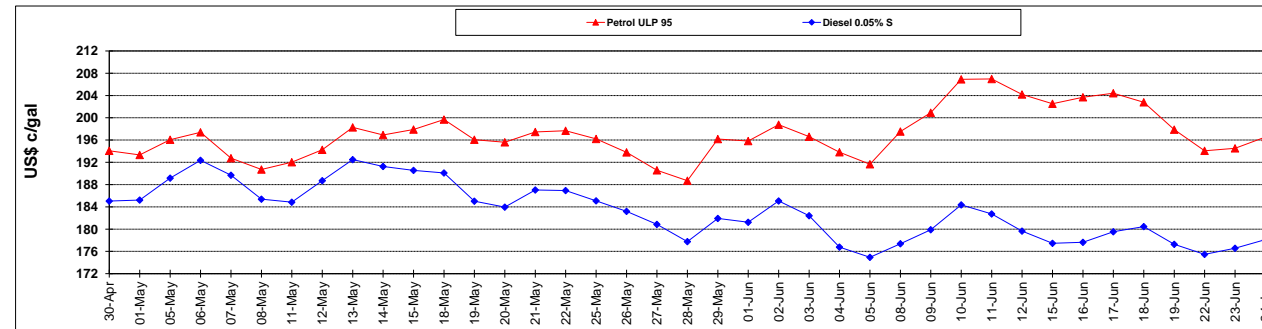
	PETROL 95	PETROL 93	DIESEL 0.05%	DIESEL 0.005%	ILL. PAR.
- MOVEMENT IN INTERNATIONAL PRODUCT PRICES	(21.534)	(24.972)	13.253	14.157	12.776
- MOVEMENT IN EXCHANGE RATE	(21.778)	(21.309)	(19.876)	(19.971)	(19.428)
AVERAGE UNIT OVER/(UNDER) RECOVERY 29/05/2015 - 24/06/2015	(43.312)	(46.281)	(6.623)	(5.814)	(6.652)

R/\$ EXCHANGE RATE - (R/\$ 12.1510 - 24/06/2015)

EXCHANGE RATE USED IN BASIC FUEL PRICE



INTERNATIONAL PRODUCT PRICES OF BASKET USED IN BASIC FUEL PRICE



BASIC FUEL PRICE IN SA CENTS PER LITRE

