

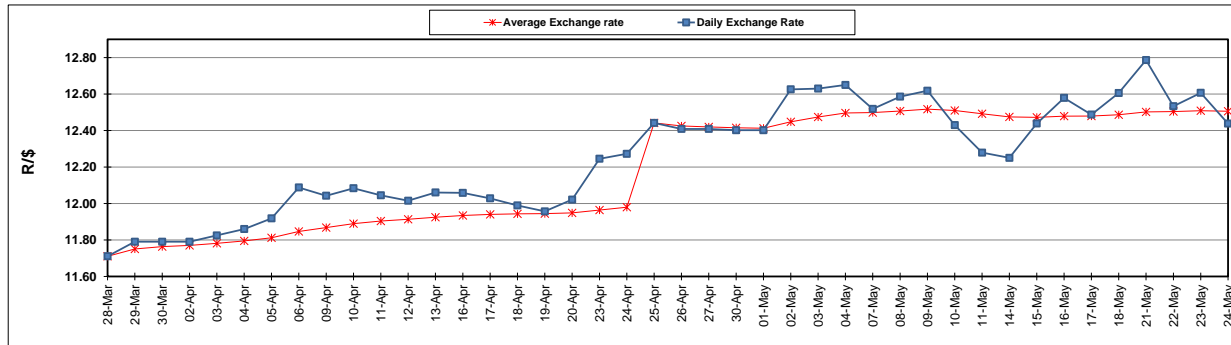
	PETROL 95 ULP	PETROL 93 ULP & LRP	DIESEL 0.05%	DIESEL 0.005%	ILL. PAR.
GAUTENG PUMP PRICE (SA c/l) AS FROM 02/05/2018	1 497.000	1 472.000	-	-	-
WHOLESALE PRICE (SA c/l) AS FROM 02/05/2018	-	-	1 333.830	1 338.230	845.088
SINGLE NATIONAL MAXIMUM RETAIL PRICE	-	-	-	-	1 089.000
BASIC FUEL PRICE - 24/05/2018 (SA c/l)	744.494	732.798	757.239	763.368	761.089
PRESS RELEASE CONTRIBUTION TO BFP 02/05/2018 - 24/05/2018 (SA c/l)	645.070	630.070	660.630	665.030	672.128
UNIT OVER/(UNDER) RECOVERY - 24/05/2018 (SA c/l)	(99.424)	(102.728)	(96.609)	(98.338)	(88.961)
AVERAGE BASIC FUEL PRICE 25/04/2018 - 24/05/2018	717.430	704.650	734.518	740.348	744.169
AVERAGE UNIT OVER/(UNDER) RECOVERY 25/04/2018 - 24/05/2018	(83.496)	(85.716)	(87.297)	(88.499)	(83.859)

ANALYSIS MOVEMENT OF AVERAGE OVER/(UNDER) RECOVERY

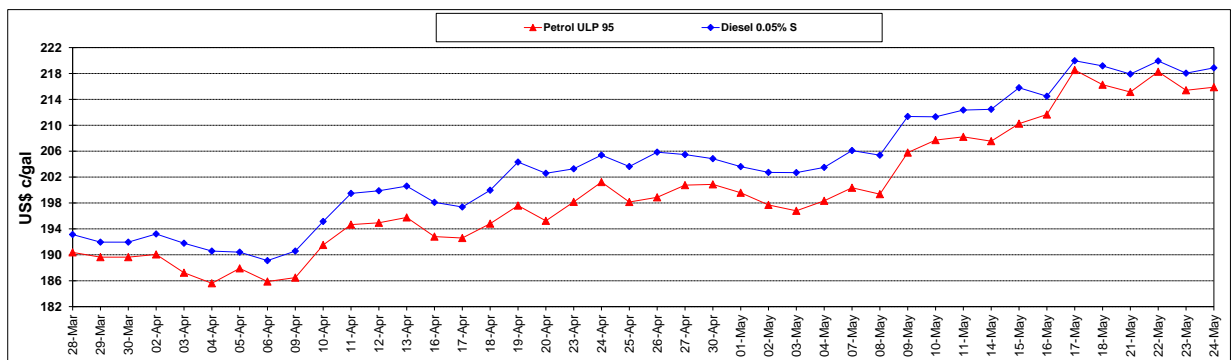
	PETROL 95	PETROL 93	DIESEL 0.05%	DIESEL 0.005%	ILL. PAR.
- MOVEMENT IN INTERNATIONAL PRODUCT PRICES	(53.320)	(56.078)	(56.403)	(57.360)	(52.559)
- MOVEMENT IN EXCHANGE RATE	(30.176)	(29.638)	(30.894)	(31.140)	(31.300)
AVERAGE UNIT OVER/(UNDER) RECOVERY 25/04/2018 - 24/05/2018	(83.496)	(85.716)	(87.297)	(88.499)	(83.859)

R/\$ EXCHANGE RATE - (R/\$12.4380 - 24/05/2018)

EXCHANGE RATE USED IN BASIC FUEL PRICE



INTERNATIONAL PRODUCT PRICES OF BASKET USED IN BASIC FUEL PRICE



BASIC FUEL PRICE IN SA CENTS PER LITRE

