

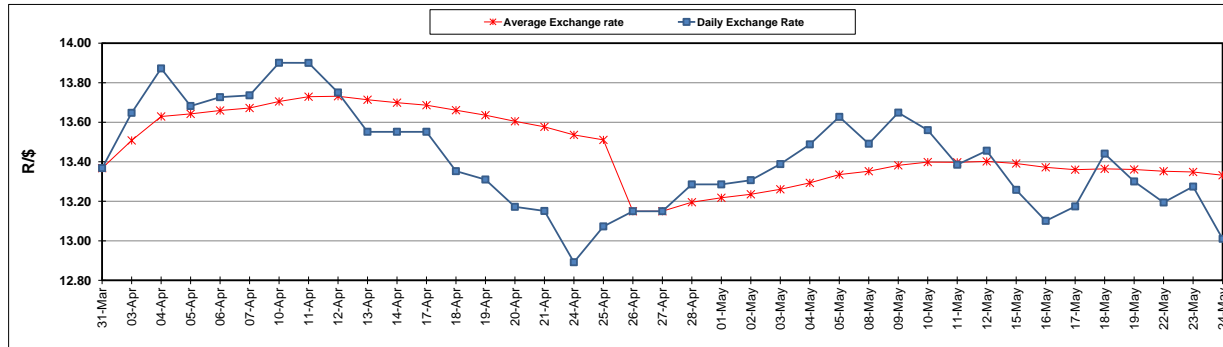
	PETROL 95 ULP	PETROL 93 ULP & LRP	DIESEL 0.05%	DIESEL 0.005%	ILL. PAR.
GAUTENG PUMP PRICE (SA c/l) AS FROM 03/05/2017	1 379.000	1 357.000	-	-	-
WHOLESALE PRICE (SA c/l) AS FROM 03/05/2017	-	-	1 180.330	1 184.730	736.088
SINGLE NATIONAL MAXIMUM RETAIL PRICE	-	-	-	-	947.000
BASIC FUEL PRICE - 24/05/2017 (SA c/l)	575.354	561.540	556.626	560.252	555.949
PRESS RELEASE CONTRIBUTION TO BFP 03/05/2017 - 24/05/2017 (SA c/l)	597.670	585.670	568.630	573.030	565.128
UNIT OVER/(UNDER) RECOVERY (SA c/l) - 24/05/2017	22.316	24.130	12.004	12.778	9.179
AVERAGE BASIC FUEL PRICE 26/04/2017 - 24/05/2017	565.553	549.652	542.657	546.170	537.584
AVERAGE UNIT OVER/(UNDER) RECOVERY 26/04/2017- 24/05/2017	20.450	24.352	18.830	19.241	19.448

ANALYSIS MOVEMENT OF AVERAGE OVER/(UNDER) RECOVERY

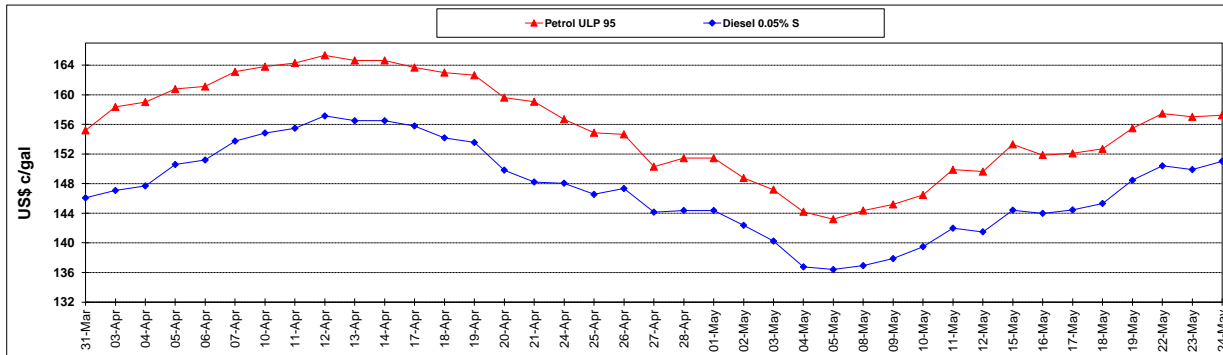
	PETROL 95	PETROL 93	DIESEL 0.05%	DIESEL 0.005%	ILL. PAR.
- MOVEMENT IN INTERNATIONAL PRODUCT PRICES	12.878	16.992	11.564	11.928	12.251
- MOVEMENT IN EXCHANGE RATE	7.572	7.359	7.266	7.313	7.198
AVERAGE UNIT OVER/(UNDER) RECOVERY 26/04/2017 - 24/05/2017	20.450	24.352	18.830	19.241	19.448

R/\$ EXCHANGE RATE - (R/\$ 13.0098 - 24/05/2017)

EXCHANGE RATE USED IN BASIC FUEL PRICE



INTERNATIONAL PRODUCT PRICES OF BASKET USED IN BASIC FUEL PRICE



BASIC FUEL PRICE IN SA CENTS PER LITRE

