

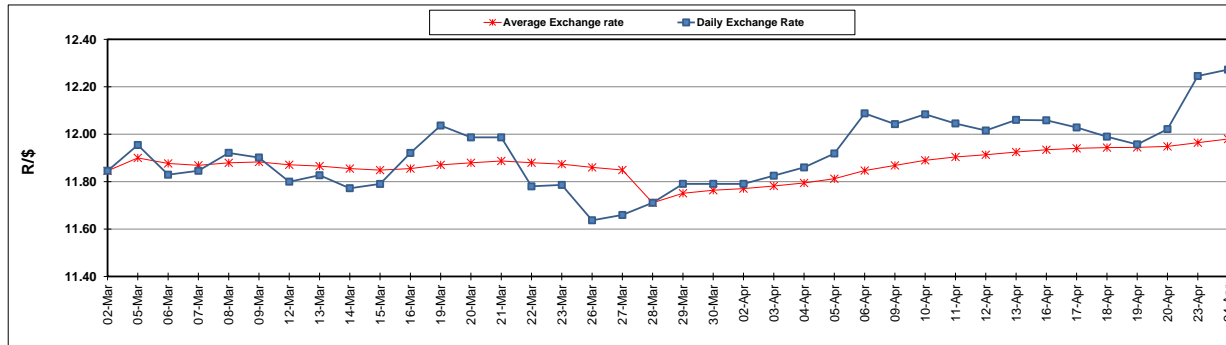
	PETROL 95 ULP	PETROL 93 ULP & LRP	DIESEL 0.05%	DIESEL 0.005%	ILL. PAR.
GAUTENG PUMP PRICE (SA c/l) AS FROM 07/03/2018	1 448.000	1 423.000	-	-	-
WHOLESALE PRICE (SA c/l) AS FROM 07/03/2018	-	-	1 274.830	1 280.230	793.088
SINGLE NATIONAL MAXIMUM RETAIL PRICE	-	-	-	-	1 026.000
BASIC FUEL PRICE - 24/04/2018 (SA c/l)	688.518	673.259	705.035	709.435	722.279
PRESS RELEASE CONTRIBUTION TO BFP 04/04/2018 - 24/04/2018 (SA c/l)	596.070	581.070	601.630	607.030	620.128
UNIT OVER/(UNDER) RECOVERY - 24/04/2018 (SA c/l)	(92.448)	(92.189)	(103.405)	(102.405)	(102.151)
AVERAGE BASIC FUEL PRICE 28/03/2018 - 24/04/2018	643.408	627.991	660.057	665.034	673.833
AVERAGE UNIT OVER/(UNDER) RECOVERY 28/03/2018 - 24/04/2018	(49.813)	(48.646)	(59.177)	(58.754)	(52.455)

ANALYSIS MOVEMENT OF AVERAGE OVER/(UNDER) RECOVERY

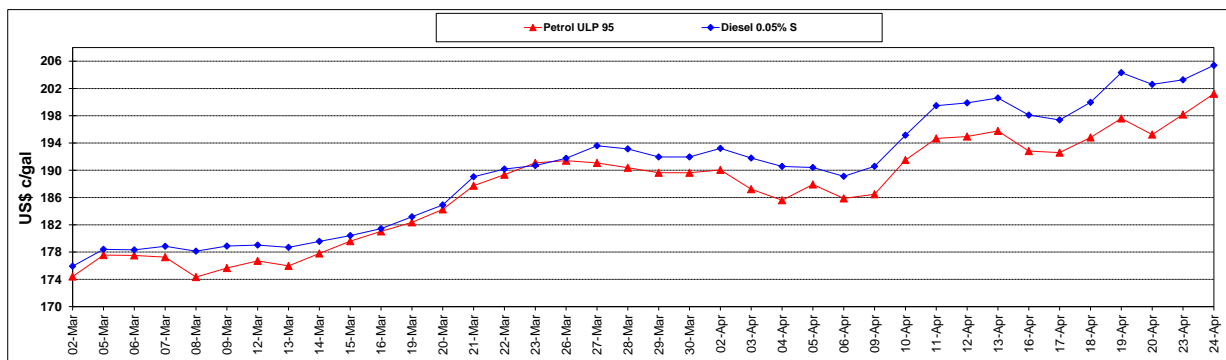
	PETROL 95	PETROL 93	DIESEL 0.05%	DIESEL 0.005%	ILL. PAR.
- MOVEMENT IN INTERNATIONAL PRODUCT PRICES	(42.788)	(41.789)	(51.970)	(51.493)	(45.098)
- MOVEMENT IN EXCHANGE RATE	(7.025)	(6.857)	(7.207)	(7.261)	(7.357)
AVERAGE UNIT OVER/(UNDER) RECOVERY 28/03/2018 - 24/04/2018	(49.813)	(48.646)	(59.177)	(58.754)	(52.455)

R/\$ EXCHANGE RATE - (R/\$12.2725 - 24/04/2018)

EXCHANGE RATE USED IN BASIC FUEL PRICE



INTERNATIONAL PRODUCT PRICES OF BASKET USED IN BASIC FUEL PRICE



BASIC FUEL PRICE IN SA CENTS PER LITRE

