

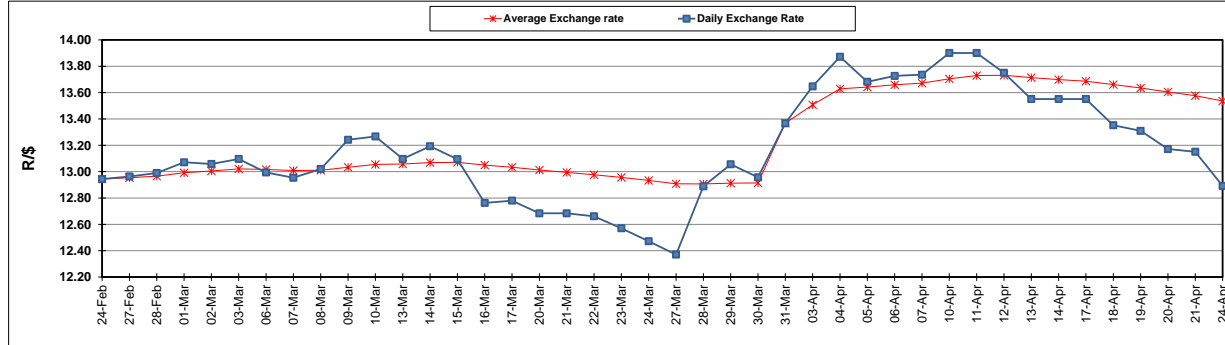
	PETROL 95 ULP	PETROL 93 ULP & LRP	DIESEL 0.05%	DIESEL 0.005%	ILL. PAR.
GAUTENG PUMP PRICE (SA c/l) AS FROM 05/04/2017	1 330.000	1 308.000	-	-	-
WHOLESALE PRICE (SA c/l) AS FROM 05/04/2017	-	-	1 150.330	1 152.730	702.088
SINGLE NATIONAL MAXIMUM RETAIL PRICE	-	-	-	-	901.000
BASIC FUEL PRICE - 24/04/2017 (SA c/l)	565.740	550.851	538.652	542.625	532.388
PRESS RELEASE CONTRIBUTION TO BFP 05/04/2017 - 24/04/2017 (SA c/l)	548.670	536.670	538.630	541.030	531.128
UNIT OVER/(UNDER) RECOVERY (SA c/l) - 24/04/2017	(17.070)	(14.181)	(0.022)	(1.595)	(1.260)
AVERAGE BASIC FUEL PRICE 31/03/2017 - 24/04/2017	611.023	594.829	580.133	584.160	576.719
AVERAGE UNIT OVER/(UNDER) RECOVERY 31/03/2017- 24/04/2017	(51.024)	(47.183)	(32.679)	(34.306)	(36.415)

### ANALYSIS MOVEMENT OF AVERAGE OVER/(UNDER) RECOVERY

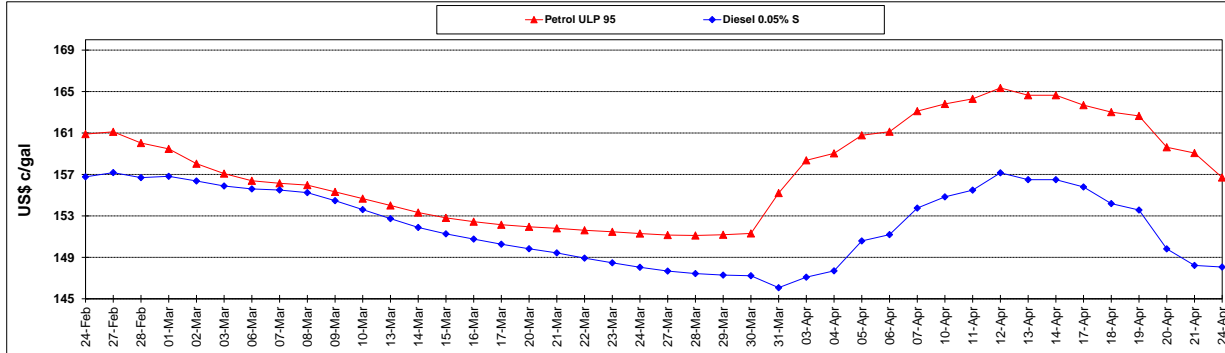
	PETROL 95	PETROL 93	DIESEL 0.05%	DIESEL 0.005%	ILL. PAR.
- MOVEMENT IN INTERNATIONAL PRODUCT PRICES	(22.974)	(19.876)	(6.047)	(7.489)	(9.940)
- MOVEMENT IN EXCHANGE RATE	(28.050)	(27.307)	(26.632)	(26.817)	(26.475)
AVERAGE UNIT OVER/(UNDER) RECOVERY 31/03/2017 - 24/04/2017	(51.024)	(47.183)	(32.679)	(34.306)	(36.415)

R/\$ EXCHANGE RATE - (R/\$ 12.8918 - 24/04/2017)

### EXCHANGE RATE USED IN BASIC FUEL PRICE



### INTERNATIONAL PRODUCT PRICES OF BASKET USED IN BASIC FUEL PRICE



### BASIC FUEL PRICE IN SA CENTS PER LITRE

