

UPDATE OF THE BASIC FUEL PRICE

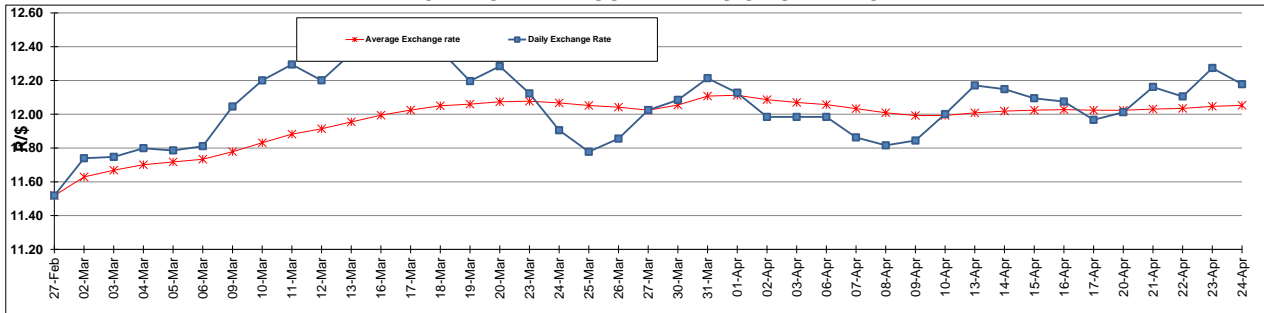
	PETROL 95 ULP	PETROL 93 ULP & LRP	DIESEL 0.05%	DIESEL 0.005%	ILL. PAR.
GAUTENG PUMP PRICE (SA c/l) AS FROM 03/04/2015	1,289.000	1,261.000	-	-	-
WHOLESALE PRICE (SA c/l) AS FROM 03/04/2015	-	-	1,122.790	1,129.190	743.828
SINGLE NATIONAL MAXIMUM RETAIL PRICE	-	-	-	-	957.000
BASIC FUEL PRICE - 24/04/2015 (SA c/l)	660.996	649.501	628.770	634.573	619.156
PRESS RELEASE CONTRIBUTION TO BFP 24/04/2015 - 24/04/2015 (SA c/l)	615.650	597.650	594.630	601.030	586.128
UNIT OVER/(UNDER) RECOVERY (SA c/l) - 24/04/2015	(45.346)	(51.851)	(34.140)	(33.543)	(33.028)
AVERAGE BASIC FUEL PRICE 27/03/2015 - 24/04/2015	599.509	586.181	579.841	592.712	573.833
AVERAGE UNIT OVER/(UNDER) RECOVERY 27/03/2015 - 24/04/2015	4.798	0.983	9.075	3.068	9.152

ANALYSIS MOVEMENT OF AVERAGE OVER/(UNDER) RECOVERY

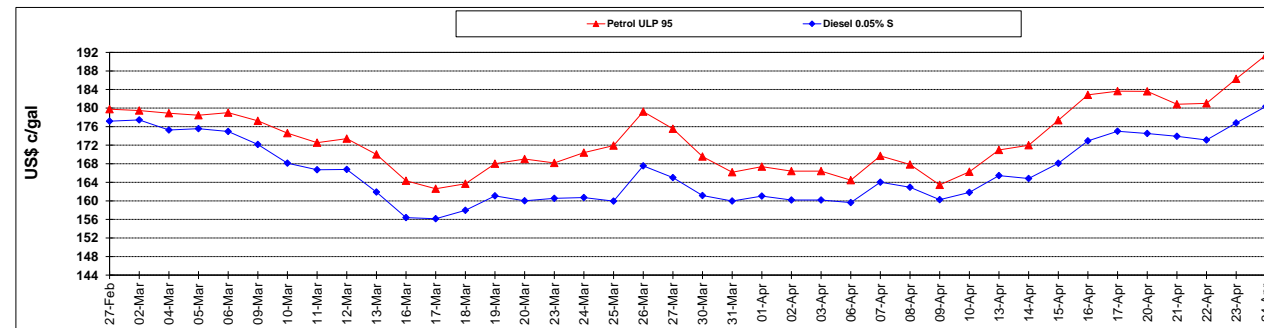
	PETROL 95	PETROL 93	DIESEL 0.05%	DIESEL 0.005%	ILL. PAR.
- MOVEMENT IN INTERNATIONAL PRODUCT PRICES	5.330	1.503	9.590	3.594	9.661
- MOVEMENT IN EXCHANGE RATE	(0.532)	(0.520)	(0.515)	(0.526)	(0.509)
AVERAGE UNIT OVER/(UNDER) RECOVERY 27/03/2015 - 24/04/2015	4.798	0.983	9.075	3.068	9.152

R/\$ EXCHANGE RATE - (R/\$ 12.1780 - 24/04/2015)

EXCHANGE RATE USED IN BASIC FUEL PRICE



INTERNATIONAL PRODUCT PRICES OF BASKET USED IN BASIC FUEL PRICE



BASIC FUEL PRICE IN SA CENTS PER LITRE

